



Belgian Linen

52" - 54" Type II 20oz. Contract Wallcovering

PHYSICAL PROPERTIES

	U.S. UNITS	METRIC UNITS
Total Weight:	20.0 oz per linear yard 13.3 oz per square yard	619 grams per linear meter 451 grams per square meter
Backing:	Nonwoven	Nonwoven
Width:	52" - 54"	1.32m - 1.37m

All patterns stocked are in 30 linear yard bolts

DESIGN INFORMATION

VERTICAL REPEAT	MATCH
Random	Random/Reversible

FEDERAL SPECIFICATIONS

Questex exceeds G.S.A Federal Specification CCC-W-408D for Type II materials using test procedures detailed in Federal Specifications CCC-T-191-B. This wallcovering passes The National Fire Protection Association NFPA286 Corner Burn Test.

FIRE HAZARD CLASSIFICATION RESULTS

- TESTED IN ACCORDANCE WITH ASTM E-84 TUNNEL TEST
- CLASS "A" FIRE RATED
- FLAME SPREAD 25
- SMOKE DEVELOPED 45

This product is intended for use in buildings that are properly designed and maintained to avoid moisture infiltration, condensation and/or accumulation at wall cavities and wall surfaces, particularly in warm, humid climates.

ANTI-MICROBIAL FEATURES

Vinyl wallcoverings contain bactericides and mildew inhibitors to discourage the growth of mold and mildew under normal conditions.

5 YEAR WARRANTY AGAINST MANUFACTURING DEFECTS

Use only adhesives and primers as recommended by the manufacturer.

COPYRIGHT

Copyright © 2018 Questex, All Rights Reserved. 465 Devon Park Drive, Wayne, PA 19087 USA
www.wallquest.com/questex - MADE IN U.S.A.

Belgian Linen

52" - 54" Type II 20oz. Contract Wallcovering





European Flax

QX20020



Willow

QX20019



Country Mill

QX20001



Stone Washed Linen

QX20005



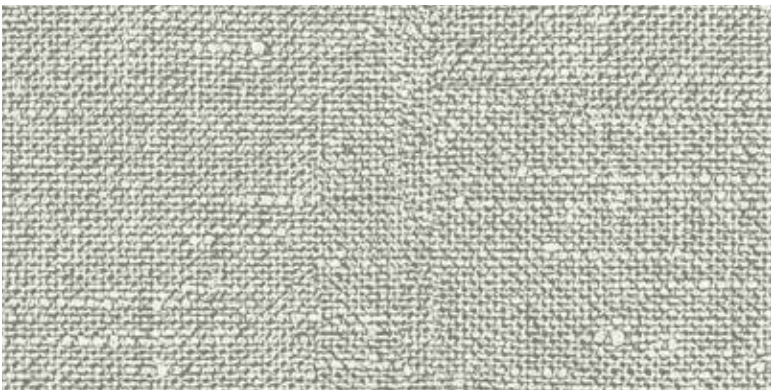
Natural Linen

QX20002



Soft Teal

QX20006



Grey Mist

QX20003



Bowler Hat

QX20008

QUESTEX

Produced in a beautiful array of colors, we offer extensive choices for your next commercial project.



Ivory Linen

QX20018



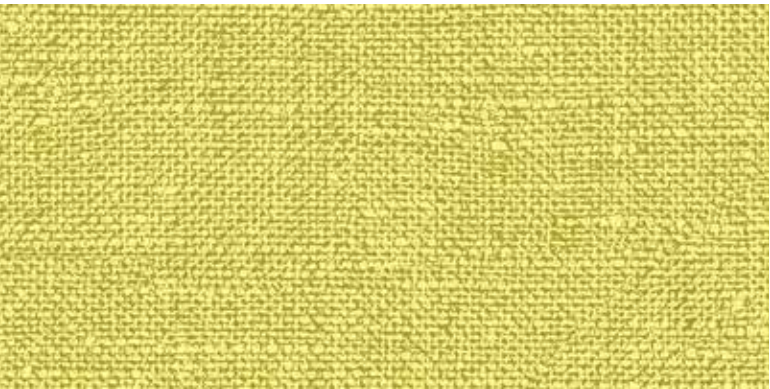
Belgian Block

QX20004



Seaside Dune

QX20009



Citrus Apple

QX20014



Poet's Jacket

QX20010



Mysterious Horizon

QX20013



Ghent Sunset

QX20011



Bruges

QX20016

QUESTEX

Produced in a beautiful array of colors, we offer extensive choices for your next commercial project.

Calypso

52" - 54" Type II 20oz. Contract Wallcovering

QUESTEX[®]
CONTRACT





Plain Weave

QX19020



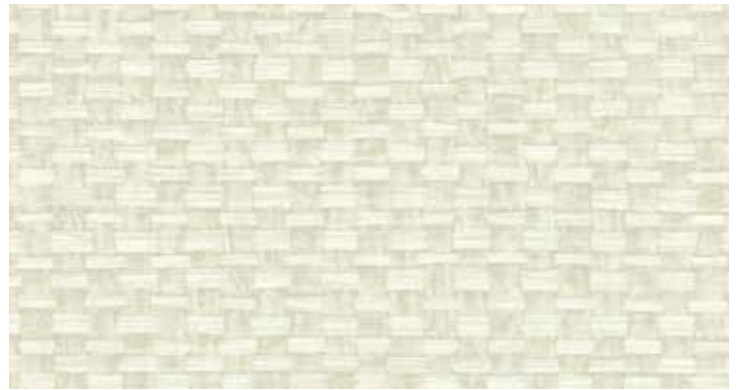
White Jute

QX19045



Esparto

QX19010



Light Sisal

QX19035



Bagasse

QX19027



Thatch

QX19025



Indian Hemp

QX19015



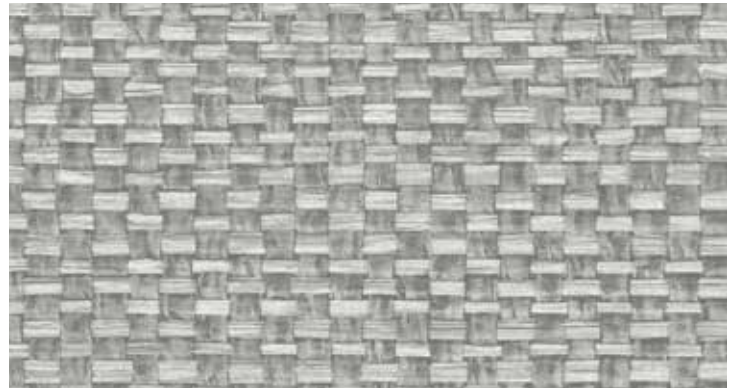
Basket Weave

QX19005



Yucca Fiber

QX19007



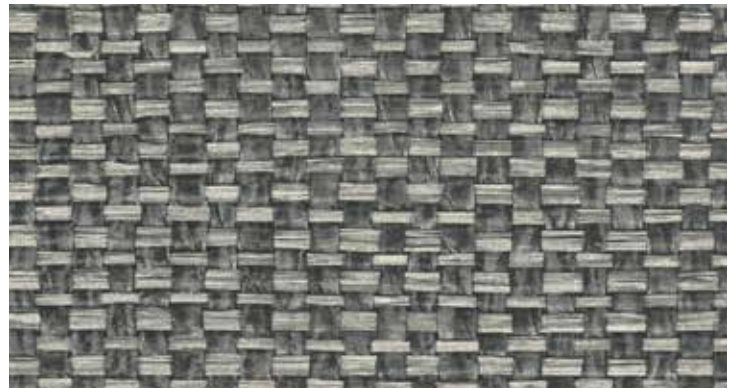
Grey Reeds

QX19008



Coconut Husk

QX19037



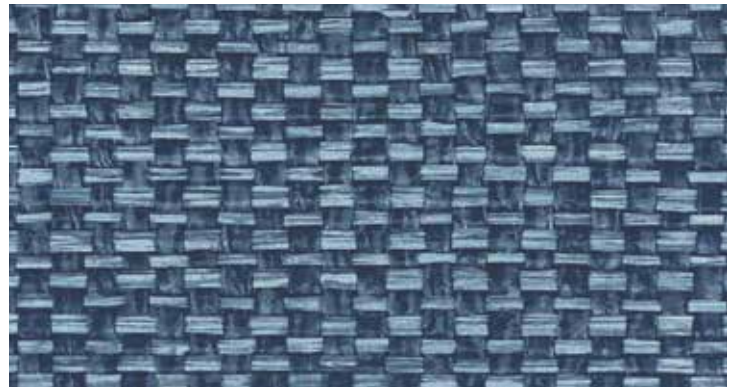
Bamboo Charcoal

QX19000



Sugar Cane

QX19006



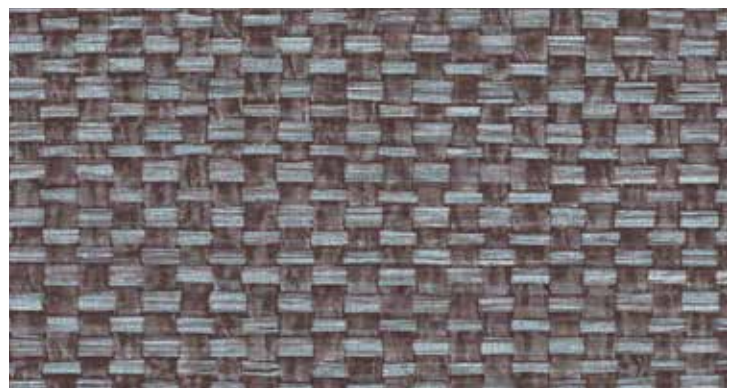
Indigo Loom

QX19002



Cattails

QX19001



Blue Flax

QX19018



Calypso

52"- 54" Type II 20oz. Contract Wallcovering

PHYSICAL PROPERTIES

	U.S. UNITS	METRIC UNITS
Total Weight:	20.0 oz per linear yard 13.3 oz per square yard	619 grams per linear meter 451 grams per square meter
Backing:	Nonwoven	Nonwoven
Width:	52" - 54"	1.32m - 1.37m

All patterns stocked are in 30 linear yard bolts

DESIGN INFORMATION

VERTICAL REPEAT	MATCH
Random	Random/Reversible

FEDERAL SPECIFICATIONS

Questex exceeds G.S.A Federal Specification CCC-W-408D for Type II materials using test procedures detailed in Federal Specifications CCC-T-191-B. This wallcovering passes The National Fire Protection Association NFPA286 Corner Burn Test.

FIRE HAZARD CLASSIFICATION RESULTS

- TESTED IN ACCORDANCE WITH ASTM E-84 TUNNEL TEST
- CLASS "A" FIRE RATED
- FLAME SPREAD 25
- SMOKE DEVELOPED 45

This product is intended for use in buildings that are properly designed and maintained to avoid moisture infiltration, condensation and/or accumulation at wall cavities and wall surfaces, particularly in warm, humid climates.

ANTI-MICROBIAL FEATURES

Vinyl wallcoverings contain bactericides and mildew inhibitors to discourage the growth of mold and mildew under normal conditions.

5 YEAR WARRANTY AGAINST MANUFACTURING DEFECTS

Use only adhesives and primers as recommended by the manufacturer.

COPYRIGHT

Copyright © 2016 Questex, All Rights Reserved. 465 Devon Park Drive, Wayne, PA 19087 USA
www.wallquest.com/questex - MADE IN U.S.A.



Coastal Hemp

52"- 54" Type II 20oz. Contract Wallcovering

PHYSICAL PROPERTIES

	U.S. UNITS	METRIC UNITS
Total Weight:	20.0 oz per linear yard 13.3 oz per square yard	619 grams per linear meter 451 grams per square meter
Backing:	Nonwoven	Nonwoven
Width:	52" - 54"	1.32m - 1.37m

All patterns stocked are in 30 linear yard bolts

DESIGN INFORMATION

VERTICAL REPEAT	MATCH
Random	Random/Reversible

FEDERAL SPECIFICATIONS

Questex exceeds G.S.A Federal Specification CCC-W-408D for Type II materials using test procedures detailed in Federal Specifications CCC-T-191-B. This wallcovering passes The National Fire Protection Association NFPA286 Corner Burn Test.

FIRE HAZARD CLASSIFICATION RESULTS

- TESTED IN ACCORDANCE WITH ASTM E-84 TUNNEL TEST
- CLASS "A" FIRE RATED
- FLAME SPREAD 25
- SMOKE DEVELOPED 20
- EN13501 (B-s1,d0)

This product is intended for use in buildings that are properly designed and maintained to avoid moisture infiltration, condensation and/or accumulation at wall cavities and wall surfaces, particularly in warm, humid climates.

ANTI-MICROBIAL FEATURES

Vinyl wallcoverings contain bactericides and mildew inhibitors to discourage the growth of mold and mildew under normal conditions.

5 YEAR WARRANTY AGAINST MANUFACTURING DEFECTS

Use only adhesives and primers as recommended by the manufacturer.

COPYRIGHT

Copyright © 2018 Questex, All Rights Reserved. 465 Devon Park Drive, Wayne, PA 19087 USA
www.wallquest.com/questex - MADE IN U.S.A.

Coastal Hemp

52"- 54" Type II 20oz. Contract Wallcovering





Bone White BV35415



Ivory BV35407



Natural Stone BV35405



Hidden Cove BV35417



Sandy Shores BV35413



Sandstone BV35425



Downtown BV35418



Cliffside BV35438



Moccasin BV35426



Cattails BV35436



Slate & Shine BV35408



Mindful Grey BV35428



Currant BV35406



Pavestone BV35416



Graphite BV35410



Black Pepper BV35400

QUESTEX

Produced in a beautiful array of colors, we offer extensive choices for your next commercial project.

QUESTEX

Produced in a beautiful array of colors, we offer extensive choices for your next commercial project.



Aloe BV35454



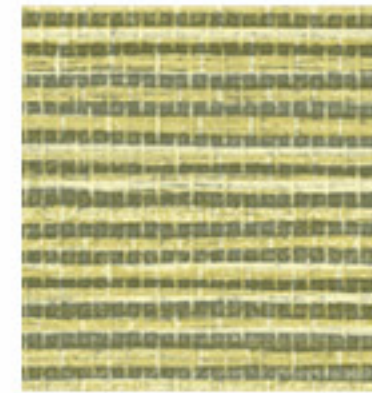
Tender Green BV35444



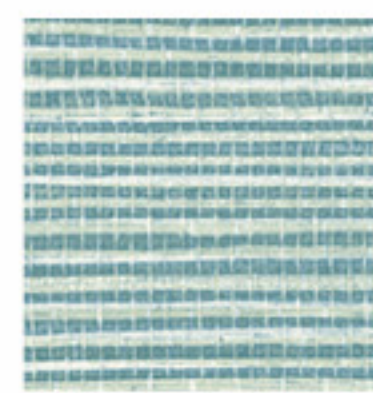
Serenity Blue BV35422



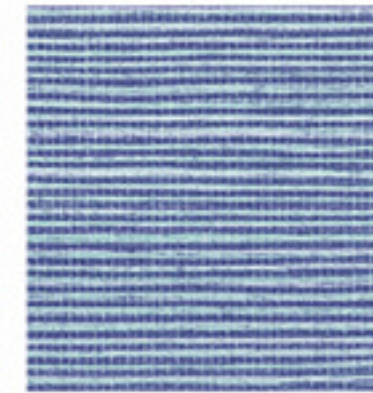
Tangerine BV35421



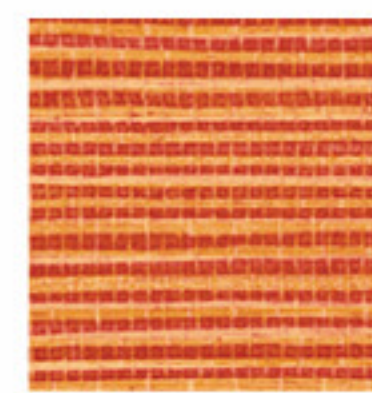
Lime Moss BV35424



Bridgewater BV35464



Carolina Blue BV35432



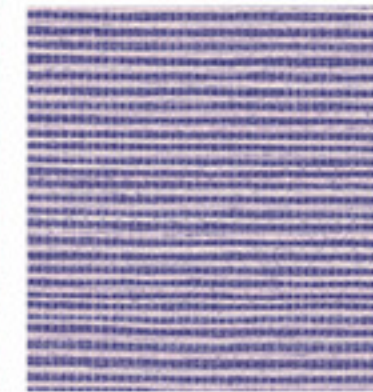
Pumpkin BV35403



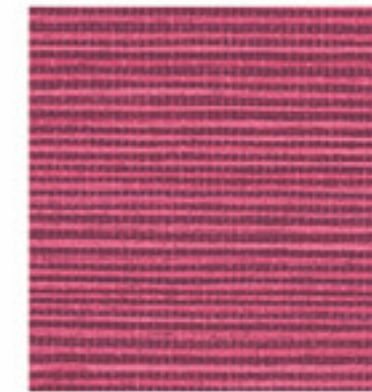
Verdant BV35414



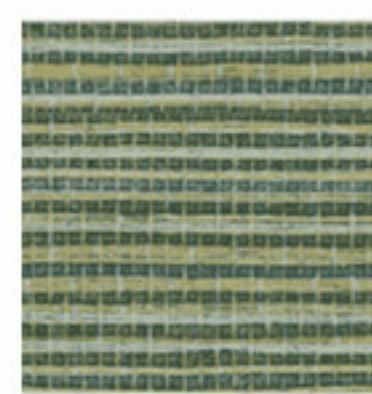
Jungle Green BV35434



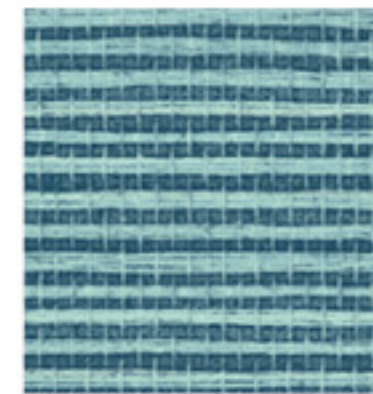
Vibrant Orchid BV35409



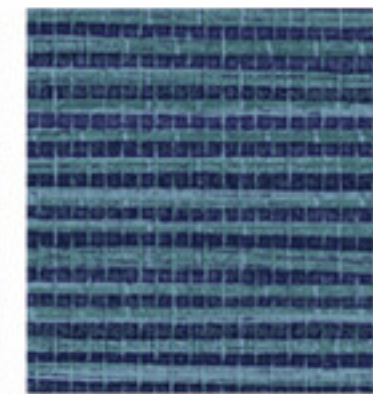
Magenta BV35411



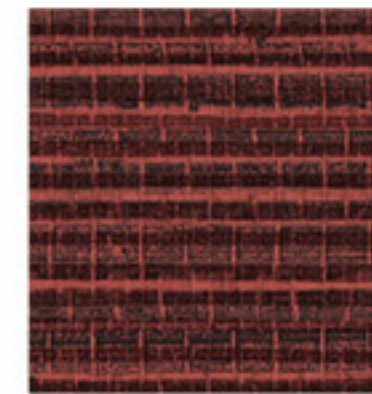
Spruce Green BV35404



Caribbean Sea BV35402



Ocean Blue BV35412



Cabernet BV35401

Coastal Moire

52" - 54" Type II 20oz. Contract Wallcovering

QUESTEX[®]
C O N T R A C T





Canvas Linen

QX18507



Flamingo

QX18501



White Glove

QX18520



Sage Garden

QX18504



Morning Crepe

QX18527



Mississippi River

QX18514



Mocha Shine

QX18506



Luster

QX18517



Suntan

QX18515



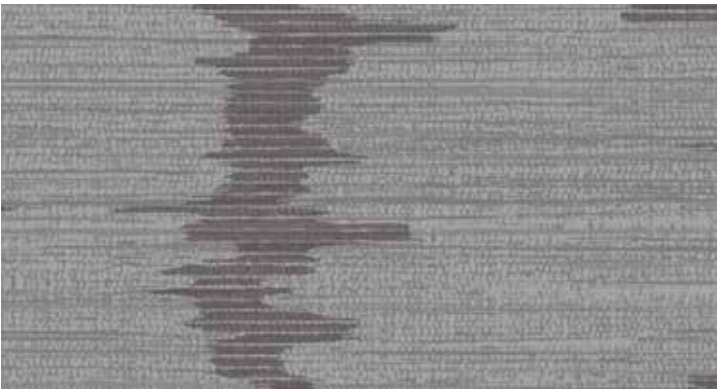
Wild Coast

QX18508



Peruvian Gold

QX18505



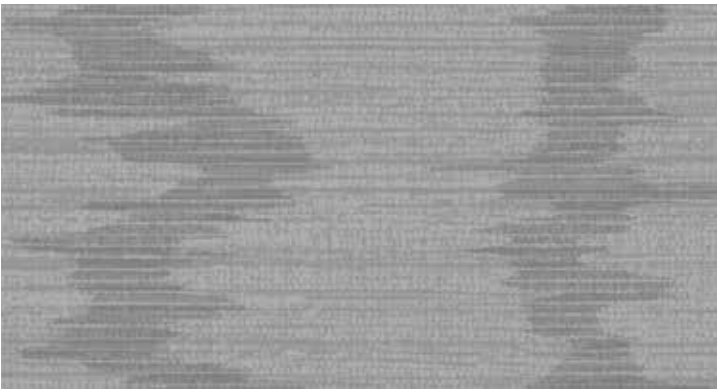
Dark Quartz

QX18510



Starry Night

QX18512



Titanium Shine

QX18500



Crimson

QX18511



Mountain Range

QX18502



Coastal Moire

52"- 54" Type II 20oz. Contract Wallcovering

PHYSICAL PROPERTIES

	U.S. UNITS	METRIC UNITS
Total Weight:	20.0 oz per linear yard 13.3 oz per square yard	619 grams per linear meter 451 grams per square meter
Backing:	Nonwoven	Nonwoven
Width:	52"- 54"	1.32m - 1.37m

All patterns stocked are in 30 linear yard bolts

DESIGN INFORMATION

VERTICAL REPEAT	MATCH
Random	Random/Reversible

FEDERAL SPECIFICATIONS

Questex exceeds G.S.A Federal Specification CCC-W-408D for Type II materials using test procedures detailed in Federal Specifications CCC-T-191-B. This wallcovering passes The National Fire Protection Association NFPA286 Corner Burn Test.

FIRE HAZARD CLASSIFICATION RESULTS

- TESTED IN ACCORDANCE WITH ASTM E-84 TUNNEL TEST
- CLASS "A" FIRE RATED
- FLAME SPREAD 25
- SMOKE DEVELOPED 45

This product is intended for use in buildings that are properly designed and maintained to avoid moisture infiltration, condensation and/or accumulation at wall cavities and wall surfaces, particularly in warm, humid climates.

ANTI-MICROBIAL FEATURES

Vinyl wallcoverings contain bactericides and mildew inhibitors to discourage the growth of mold and mildew under normal conditions.

5 YEAR WARRANTY AGAINST MANUFACTURING DEFECTS

Use only adhesives and primers as recommended by the manufacturer.

PHOTO CREDITS

Shutterstock / Kristina Bessolova

COPYRIGHT

Copyright © 2017 Questex, All Rights Reserved. 465 Devon Park Drive, Wayne, PA 19087 USA
www.wallquest.com/questex - MADE IN U.S.A.



Crossroads & coordinating plain

52" - 54" Type II 20oz. Contract Wallcovering

PHYSICAL PROPERTIES

	U.S. UNITS	METRIC UNITS
Total Weight:	20.0 oz per linear yard 13.3 oz per square yard	619 grams per linear meter 451 grams per square meter
Backing:	Nonwoven	Nonwoven
Width:	52" - 54"	1.32m - 1.37m

All patterns stocked are in 30 linear yard bolts

DESIGN INFORMATION

	VERTICAL REPEAT	MATCH
BW453:	53cm	Straight
BW458:	Random	Random/Reversible

FEDERAL SPECIFICATIONS

Questex exceeds G.S.A Federal Specification CCC-W-408D for Type II materials using test procedures detailed in Federal Specifications CCC-T-191-B. This wallcovering passes The National Fire Protection Association NFPA286 Corner Burn Test.

FIRE HAZARD CLASSIFICATION RESULTS

- TESTED IN ACCORDANCE WITH ASTM E-84 TUNNEL TEST
- CLASS "A" FIRE RATED
- FLAME SPREAD 25
- SMOKE DEVELOPED 20
- EN13501 (B-s1,d0)

This product is intended for use in buildings that are properly designed and maintained to avoid moisture infiltration, condensation and/or accumulation at wall cavities and wall surfaces, particularly in warm, humid climates.

ANTI-MICROBIAL FEATURES

Vinyl wallcoverings contain bactericides and mildew inhibitors to discourage the growth of mold and mildew under normal conditions.

5 YEAR WARRANTY AGAINST MANUFACTURING DEFECTS

Use only adhesives and primers as recommended by the manufacturer.

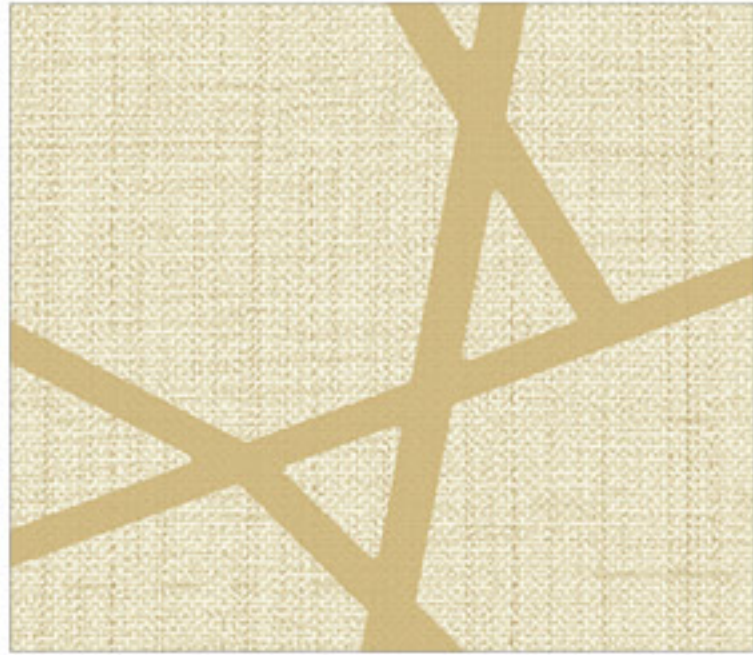
COPYRIGHT

Copyright © 2018 Questex, All Rights Reserved. 465 Devon Park Drive, Wayne, PA 19087 USA
www.wallquest.com/questex - MADE IN U.S.A.

Crossroads with coordinating plain inside!

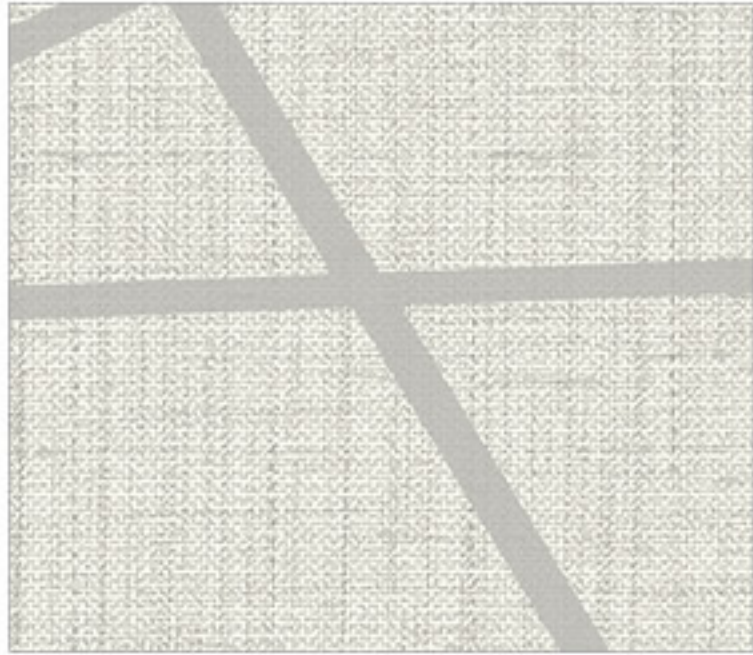
52" - 54" Type II 20oz. Contract Wallcovering





Golden Carriage

BW45305



Cinder Shine

BW45308



Navy Brook

BW45302



White Abalone

BW45300



Soho

BW45807



Abalone

BW45800

QUESTEX

Produced in a beautiful array of colors, we offer extensive choices for your next commercial project.

QUESTEX

Produced in a beautiful array of colors, we offer extensive choices for your next commercial project.



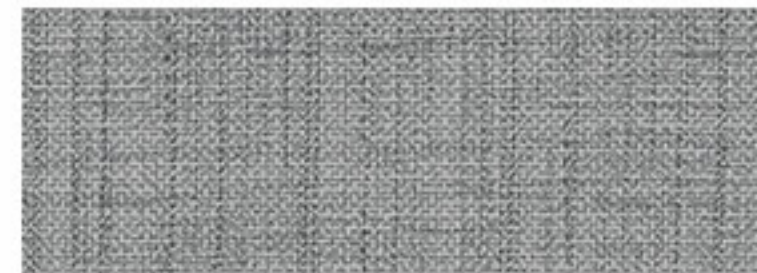
Cinder

BW45808



Ash

BW45806



Summer Fog

BW45812



Wisteria

BW45809



Hidden Brook

BW45802



Carriage House

BW45805



Warm Tea

BW45815



Beechwood

BW45825



Green Dianthus

BW45804



Artist Charcoal

BW45810



Easy Linen

52" - 54" Type II 20oz. Contract Wallcovering

PHYSICAL PROPERTIES

	U.S. UNITS	METRIC UNITS
Total Weight:	20.0 oz per linear yard 13.3 oz per square yard	619 grams per linear meter 451 grams per square meter
Backing:	Nonwoven	Nonwoven
Width:	52" - 54"	1.32m - 1.37m

All patterns stocked are in 30 linear yard bolts

DESIGN INFORMATION

VERTICAL REPEAT	MATCH
Random	Random/Reversible

FEDERAL SPECIFICATIONS

Questex exceeds G.S.A Federal Specification CCC-W-408D for Type II materials using test procedures detailed in Federal Specifications CCC-T-191-B. This wallcovering passes The National Fire Protection Association NFPA286 Corner Burn Test.

FIRE HAZARD CLASSIFICATION RESULTS

- TESTED IN ACCORDANCE WITH ASTM E-84 TUNNEL TEST
- CLASS "A" FIRE RATED
- FLAME SPREAD 25
- SMOKE DEVELOPED 20
- EN13501 (B-s1,d0)

This product is intended for use in buildings that are properly designed and maintained to avoid moisture infiltration, condensation and/or accumulation at wall cavities and wall surfaces, particularly in warm, humid climates.

ANTI-MICROBIAL FEATURES

Vinyl wallcoverings contain bactericides and mildew inhibitors to discourage the growth of mold and mildew under normal conditions.

5 YEAR WARRANTY AGAINST MANUFACTURING DEFECTS

Use only adhesives and primers as recommended by the manufacturer.

COPYRIGHT

Copyright © 2018 Questex, All Rights Reserved. 465 Devon Park Drive, Wayne, PA 19087 USA
www.wallquest.com/questex - MADE IN U.S.A.

Easy Linen

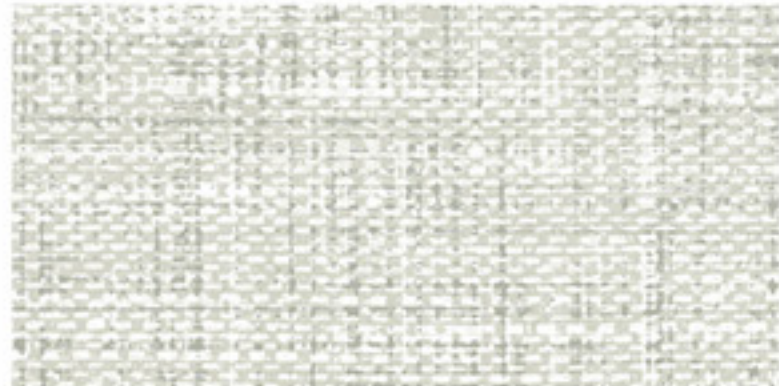
52" - 54" Type II 20oz. Contract Wallcovering





Muslin

BV35205



Morning Mist

BV35208



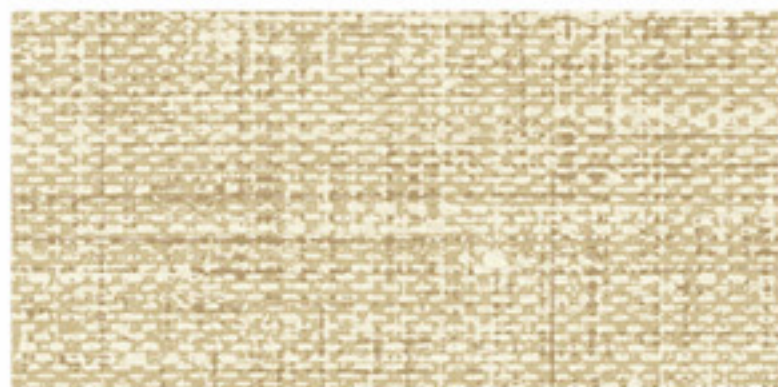
Oat

BV35207



Mohair

BV35217



Hazelnut

BV35215



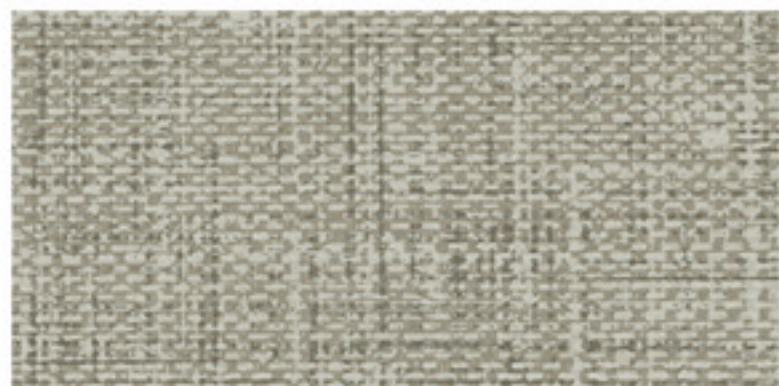
Dove Grey

BV35218



Driftwood

BV35216



Warm Slate

BV35228

QUESTEX

Produced in a beautiful array of colors, we offer extensive choices for your next commercial project.

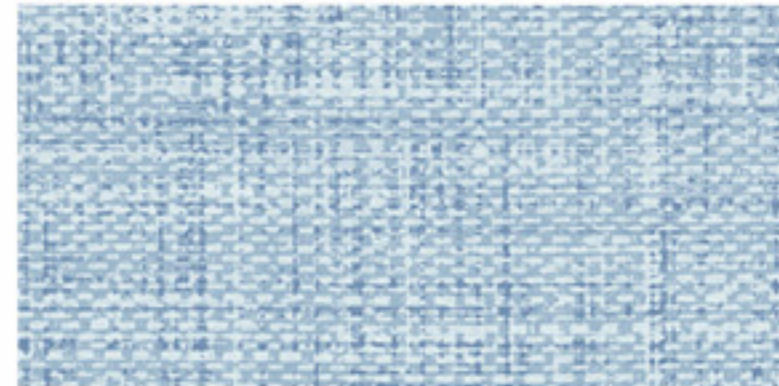
QUESTEX

Produced in a beautiful array of colors, we offer extensive choices for your next commercial project.



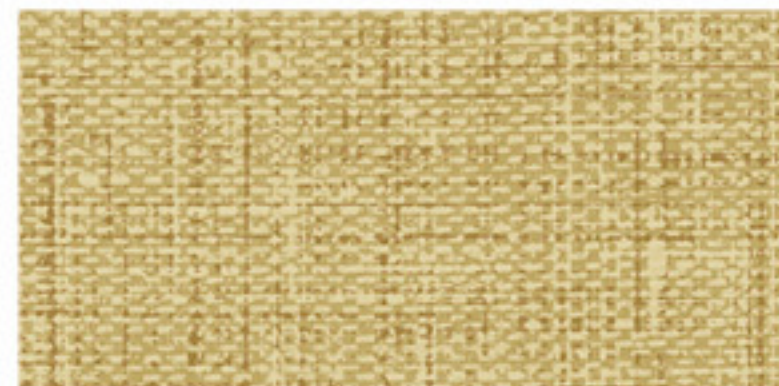
Sunshine

BV35203



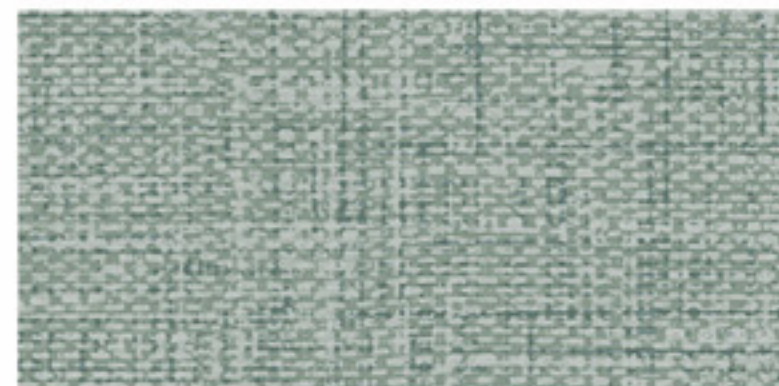
Crisp Blue

BV35212



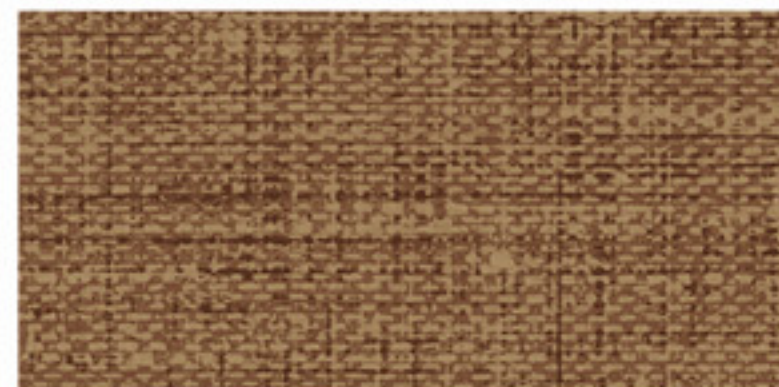
Sandcastle

BV35213



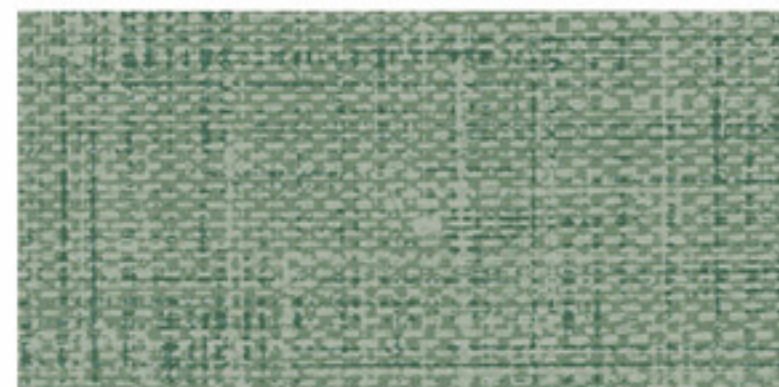
Sage

BV35204



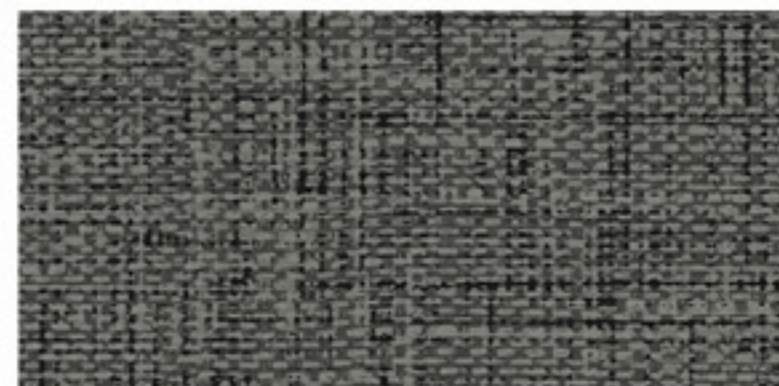
Rusty Amber

BV35206



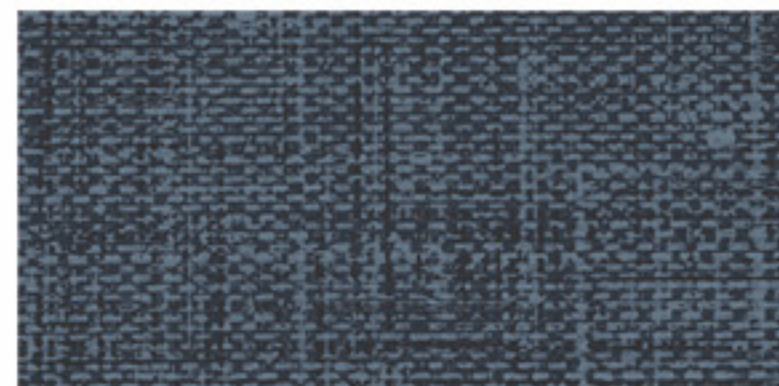
Lush Fern

BV35214



Smoky Black

BV35200



Admiral Blue

BV35202

French Linen

52" - 54" Type II 20oz. Contract Wallcovering

QUESTEX[®]
CONTRACT





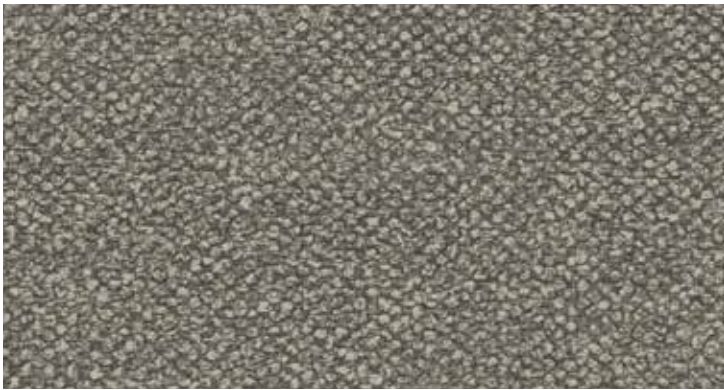
Manchester Grey

QX16018



Precast

QX16010



Smoke Signal

QX16000



Clay Beige

QX16037



Sienna

QX16001



Peninsula

QX16017



Dark Plum

QX16009



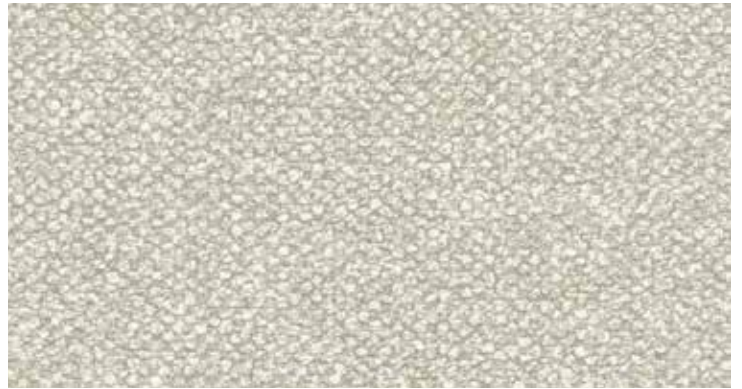
Ocean Cove

QX16007



Dove White

QX16020



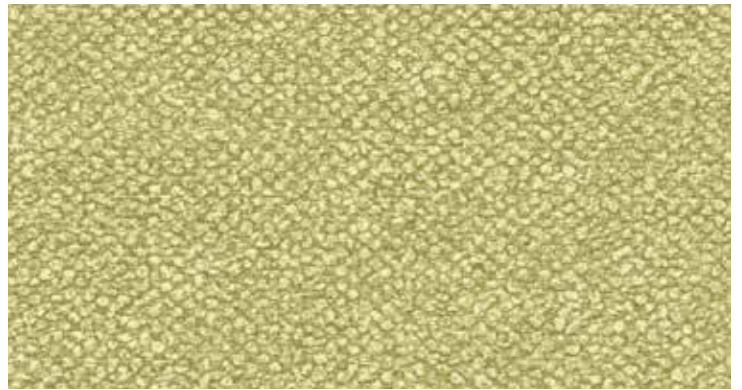
Limestone

QX16008



Latte Foam

QX16025



Chartreuse

QX16004



Pine Wood

QX16015



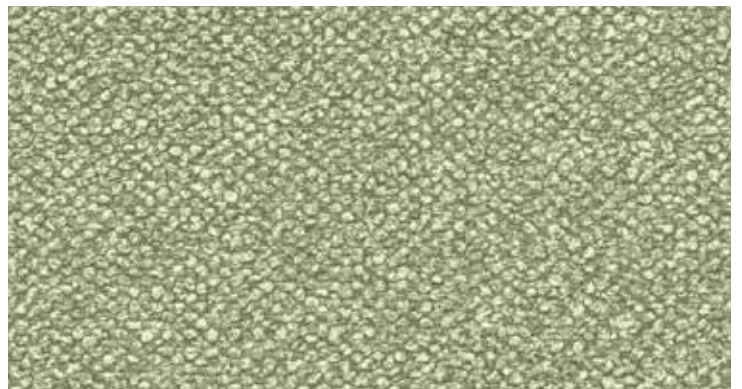
Volcanic Ash

QX16024



Sandstorm

QX16005



Olive Branch

QX16014



French Linen

52"- 54" Type II 20oz. Contract Wallcovering

PHYSICAL PROPERTIES

	U.S. UNITS	METRIC UNITS
Total Weight:	20.0 oz per linear yard 13.3 oz per square yard	619 grams per linear meter 451 grams per square meter
Backing:	Nonwoven	Nonwoven
Width:	52"- 54"	1.32m - 1.37m

All patterns stocked are in 30 linear yard bolts

DESIGN INFORMATION

VERTICAL REPEAT	MATCH
Random	Random/Reversible

FEDERAL SPECIFICATIONS

Questex exceeds G.S.A Federal Specification CCC-W-408D for Type II materials using test procedures detailed in Federal Specifications CCC-T-191-B. This wallcovering passes The National Fire Protection Association NFPA286 Corner Burn Test.

FIRE HAZARD CLASSIFICATION RESULTS

- TESTED IN ACCORDANCE WITH ASTM E-84 TUNNEL TEST
- CLASS "A" FIRE RATED
- FLAME SPREAD 25
- SMOKE DEVELOPED 45

This product is intended for use in buildings that are properly designed and maintained to avoid moisture infiltration, condensation and/or accumulation at wall cavities and wall surfaces, particularly in warm, humid climates.

ANTI-MICROBIAL FEATURES

Vinyl wallcoverings contain bactericides and mildew inhibitors to discourage the growth of mold and mildew under normal conditions.

5 YEAR WARRANTY AGAINST MANUFACTURING DEFECTS

Use only adhesives and primers as recommended by the manufacturer.

PHOTO CREDITS

Shutterstock / Maya Kruchankova

COPYRIGHT

Copyright © 2016 Questex, All Rights Reserved. 465 Devon Park Drive, Wayne, PA 19087 USA
www.wallquest.com/questex - MADE IN U.S.A.



Geo Pampas & coordinating plain

52" - 54" Type II 20oz. Contract Wallcovering

PHYSICAL PROPERTIES

	U.S. UNITS	METRIC UNITS
Total Weight:	20.0 oz per linear yard 13.3 oz per square yard	619 grams per linear meter 451 grams per square meter
Backing:	Nonwoven	Nonwoven
Width:	52" - 54"	1.32m - 1.37m

All patterns stocked are in 30 linear yard bolts

DESIGN INFORMATION

	VERTICAL REPEAT	MATCH
BW454:	53cm	Straight
BW459:	Random	Random/Reversible

FEDERAL SPECIFICATIONS

Questex exceeds G.S.A Federal Specification CCC-W-408D for Type II materials using test procedures detailed in Federal Specifications CCC-T-191-B. This wallcovering passes The National Fire Protection Association NFPA286 Corner Burn Test.

FIRE HAZARD CLASSIFICATION RESULTS

- TESTED IN ACCORDANCE WITH ASTM E-84 TUNNEL TEST
- CLASS "A" FIRE RATED
- FLAME SPREAD 25
- SMOKE DEVELOPED 20
- EN13501 (B-s1,d0)

This product is intended for use in buildings that are properly designed and maintained to avoid moisture infiltration, condensation and/or accumulation at wall cavities and wall surfaces, particularly in warm, humid climates.

ANTI-MICROBIAL FEATURES

Vinyl wallcoverings contain bactericides and mildew inhibitors to discourage the growth of mold and mildew under normal conditions.

5 YEAR WARRANTY AGAINST MANUFACTURING DEFECTS

Use only adhesives and primers as recommended by the manufacturer.

COPYRIGHT

Copyright © 2018 Questex, All Rights Reserved. 465 Devon Park Drive, Wayne, PA 19087 USA
www.wallquest.com/questex - MADE IN U.S.A.

Geo Pampas with coordinating plain inside!

52" - 54" Type II 20oz. Contract Wallcovering





Misty Grey

BW45408



Meadowfield

BW45404



Smokey Driftwood

BW45405



Winter Rye

BW45406

QUESTEX

Produced in a beautiful array of colors, we offer extensive choices for your next commercial project.

QUESTEX Produced in a beautiful array of colors, we offer extensive choices for your next commercial project.



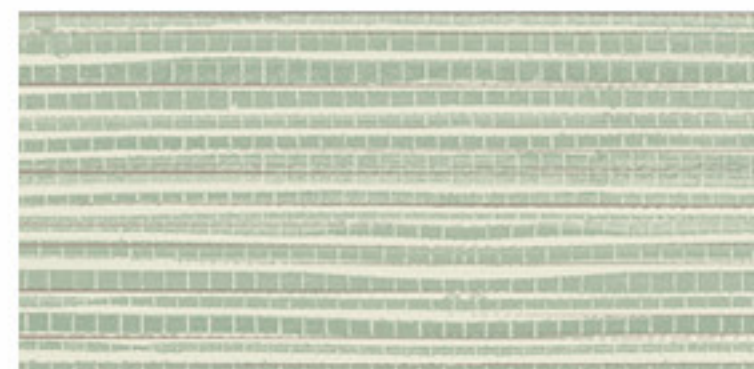
Prairie

BW45916



Field

BW45904



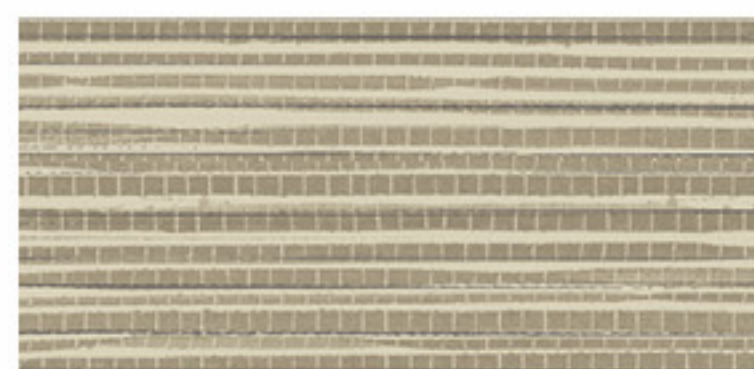
Meadow

BW45914



Morning Mist

BW45908



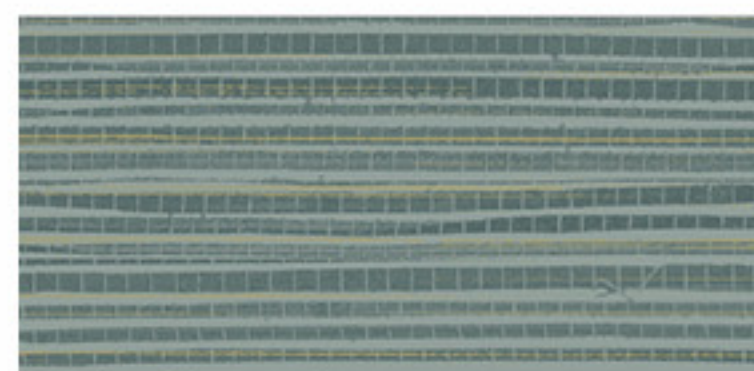
Rye Seed

BW45906



Driftwood Grey

BW45905



Bluegrass

BW45902



Harvest

BW45915



Grasslands

52" - 54" Type II 20oz. Contract Wallcovering

PHYSICAL PROPERTIES

	U.S. UNITS	METRIC UNITS
Total Weight:	20.0 oz per linear yard 13.3 oz per square yard	619 grams per linear meter 451 grams per square meter
Backing:	Nonwoven	Nonwoven
Width:	52" - 54"	1.32m - 1.37m

All patterns stocked are in 30 linear yard bolts

DESIGN INFORMATION

VERTICAL REPEAT	MATCH
Random	Random/Reversible

FEDERAL SPECIFICATIONS

Questex exceeds G.S.A Federal Specification CCC-W-408D for Type II materials using test procedures detailed in Federal Specifications CCC-T-191-B. This wallcovering passes The National Fire Protection Association NFPA286 Corner Burn Test.

FIRE HAZARD CLASSIFICATION RESULTS

- TESTED IN ACCORDANCE WITH ASTM E-84 TUNNEL TEST
- CLASS "A" FIRE RATED
- FLAME SPREAD 25
- SMOKE DEVELOPED 20
- EN13501 (B-s1,d0)

This product is intended for use in buildings that are properly designed and maintained to avoid moisture infiltration, condensation and/or accumulation at wall cavities and wall surfaces, particularly in warm, humid climates.

ANTI-MICROBIAL FEATURES

Vinyl wallcoverings contain bactericides and mildew inhibitors to discourage the growth of mold and mildew under normal conditions.

5 YEAR WARRANTY AGAINST MANUFACTURING DEFECTS

Use only adhesives and primers as recommended by the manufacturer.

COPYRIGHT

Copyright © 2018 Questex, All Rights Reserved. 465 Devon Park Drive, Wayne, PA 19087 USA
www.wallquest.com/questex - MADE IN U.S.A.

Grasslands

52" - 54" Type II 20oz. Contract Wallcovering





Seedling

BV35110



Feather Grass

BV35107



Pampas Grass

BV35105



Cove Grey

BV35108



Desert Plains

BV35115



Stormy Seas

BV35118



Savanna

BV35103



Reeds

BV35106

QUESTEX

Produced in a beautiful array of colors, we offer extensive choices for your next commercial project.

QUESTEX

Produced in a beautiful array of colors, we offer extensive choices for your next commercial project.



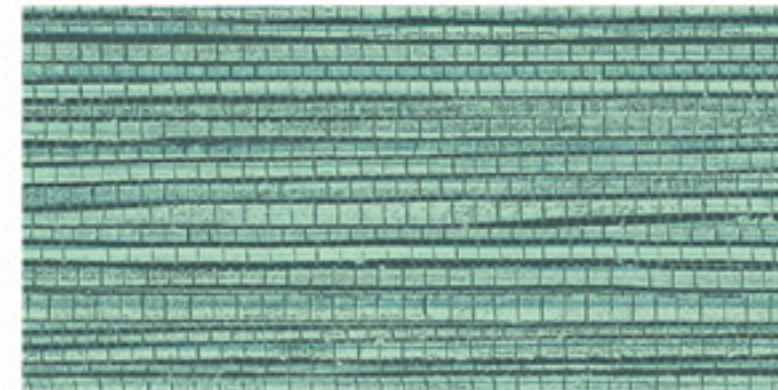
Prairie

BV35124



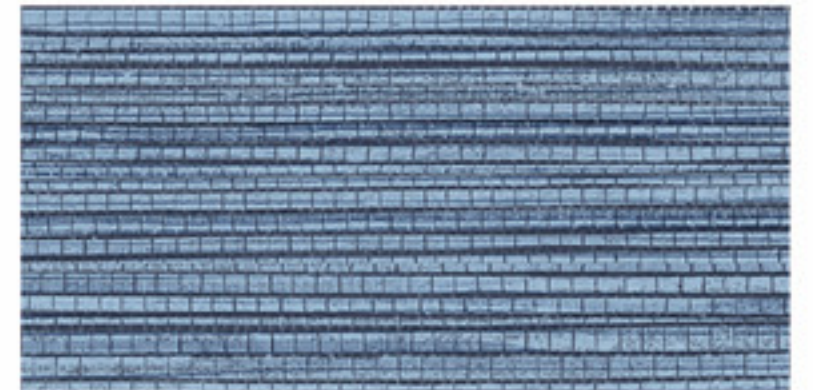
Lakeview

BV35102



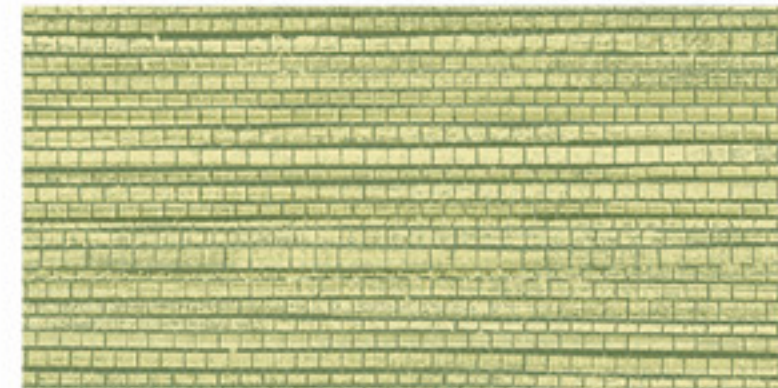
Bluestem

BV35114



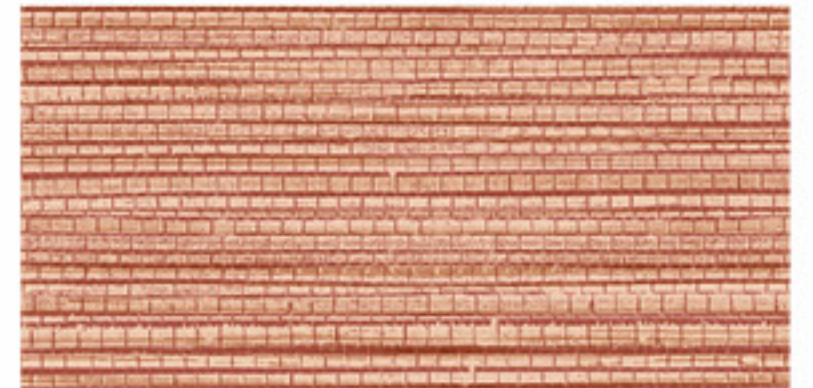
Wetlands

BV35112



Golden Forest

BV35104



Terracotta

BV35101



Blue Oat Grass

BV35116



Cedar Wood

BV35100



Marbled Gravel & coordinating plain

52" - 54" Type II 20oz. Contract Wallcovering

PHYSICAL PROPERTIES

	U.S. UNITS	METRIC UNITS
Total Weight:	20.0 oz per linear yard 13.3 oz per square yard	619 grams per linear meter 451 grams per square meter
Backing:	Nonwoven	Nonwoven
Width:	52" - 54"	1.32m - 1.37m

All patterns stocked are in 30 linear yard bolts

DESIGN INFORMATION

	VERTICAL REPEAT	MATCH
BW452:	53cm	Straight
BW457:	Random	Random/Reversible

FEDERAL SPECIFICATIONS

Questex exceeds G.S.A Federal Specification CCC-W-408D for Type II materials using test procedures detailed in Federal Specifications CCC-T-191-B. This wallcovering passes The National Fire Protection Association NFPA286 Corner Burn Test.

FIRE HAZARD CLASSIFICATION RESULTS

- TESTED IN ACCORDANCE WITH ASTM E-84 TUNNEL TEST
- CLASS "A" FIRE RATED
- FLAME SPREAD 25
- SMOKE DEVELOPED 20
- EN13501 (B-s1,d0)

This product is intended for use in buildings that are properly designed and maintained to avoid moisture infiltration, condensation and/or accumulation at wall cavities and wall surfaces, particularly in warm, humid climates.

ANTI-MICROBIAL FEATURES

Vinyl wallcoverings contain bactericides and mildew inhibitors to discourage the growth of mold and mildew under normal conditions.

5 YEAR WARRANTY AGAINST MANUFACTURING DEFECTS

Use only adhesives and primers as recommended by the manufacturer.

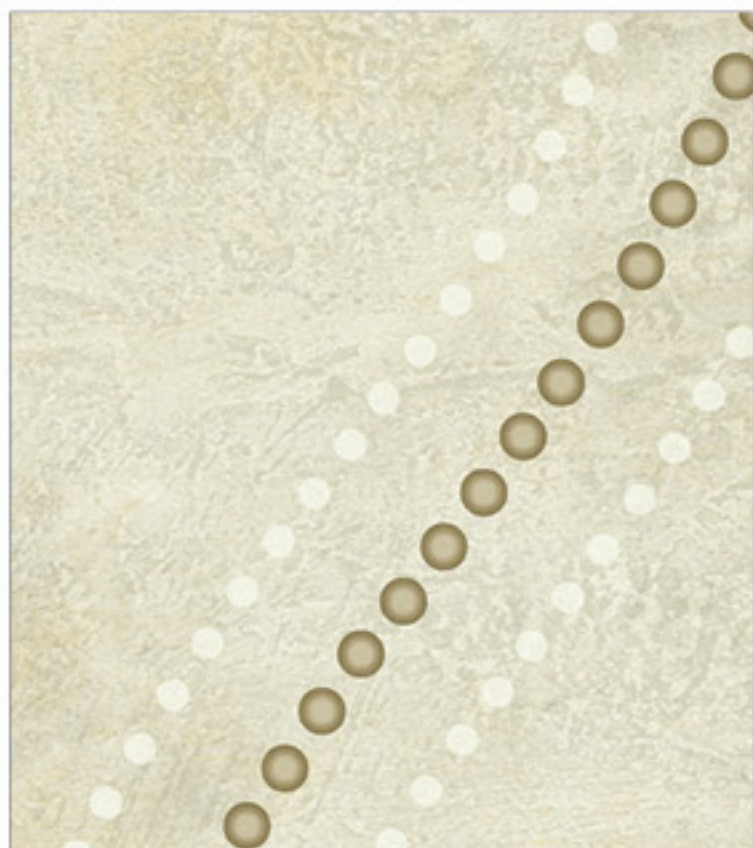
COPYRIGHT

Copyright © 2018 Questex, All Rights Reserved. 465 Devon Park Drive, Wayne, PA 19087 USA
www.wallquest.com/questex - MADE IN U.S.A.

Marbled Gravel with coordinating plain inside!

52" - 54" Type II 20oz. Contract Wallcovering





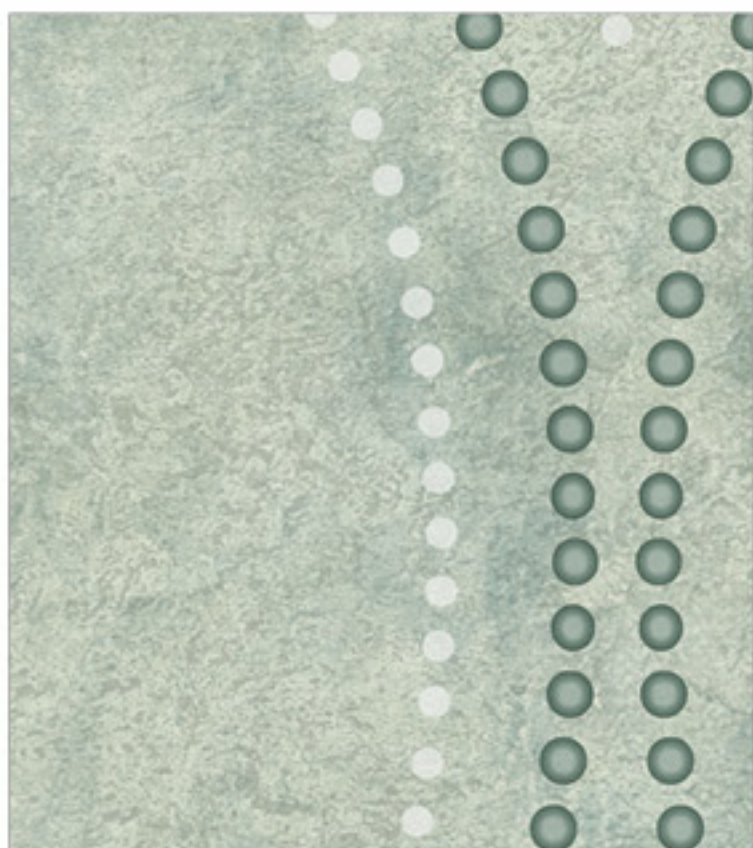
Glitter BW45207



Shimmering Pearl BW45205



Desert Ledge BW45208



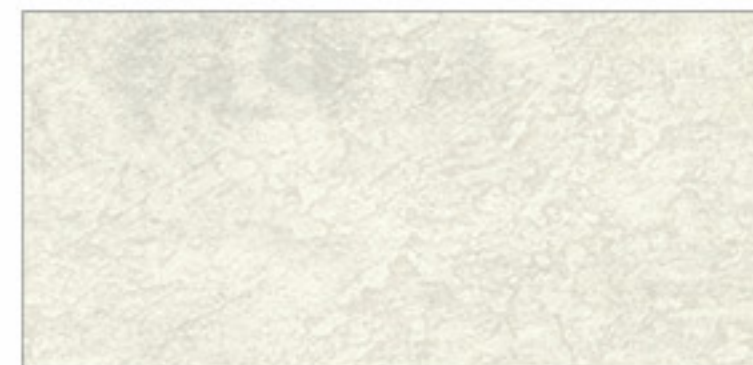
Sea Green BW45204

QUESTEX

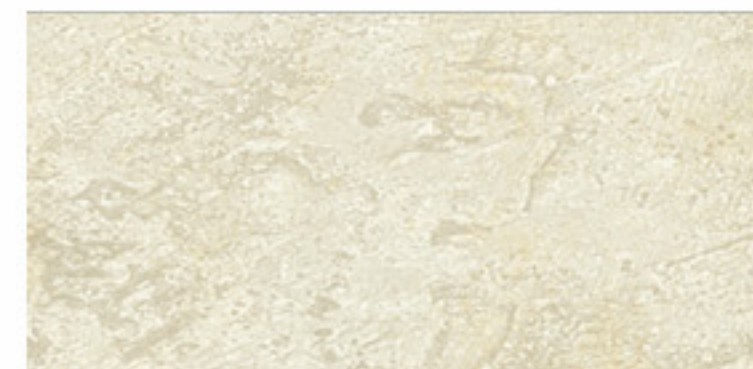
Produced in a beautiful array of colors, we offer extensive choices for your next commercial project.

QUESTEX

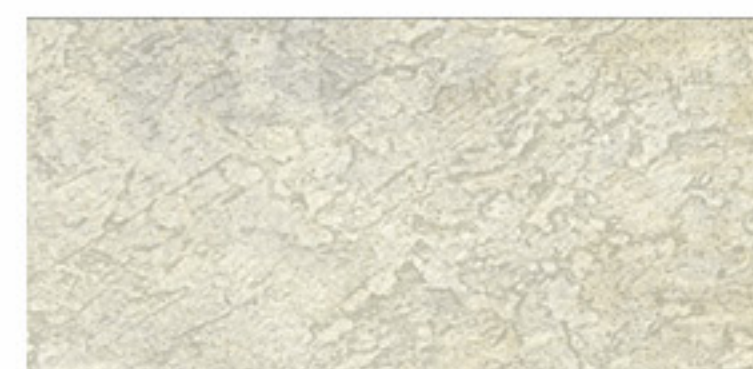
Produced in a beautiful array of colors, we offer extensive choices for your next commercial project.



Pearl BW45705



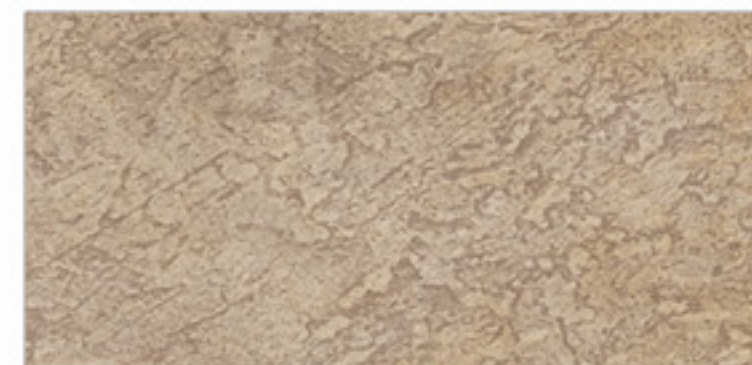
Aurous BW45707



Mineral BW45715



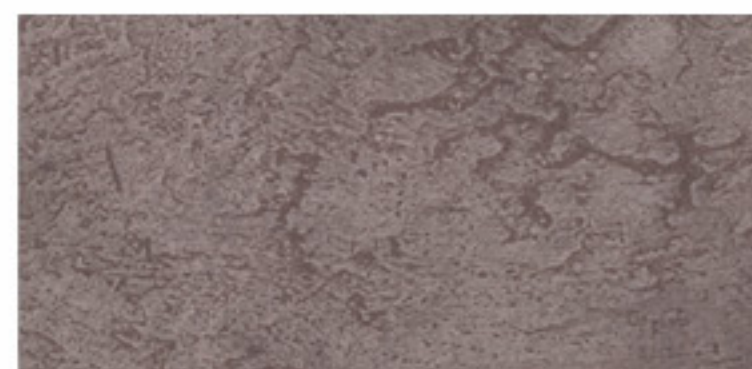
Desert Shine BW45708



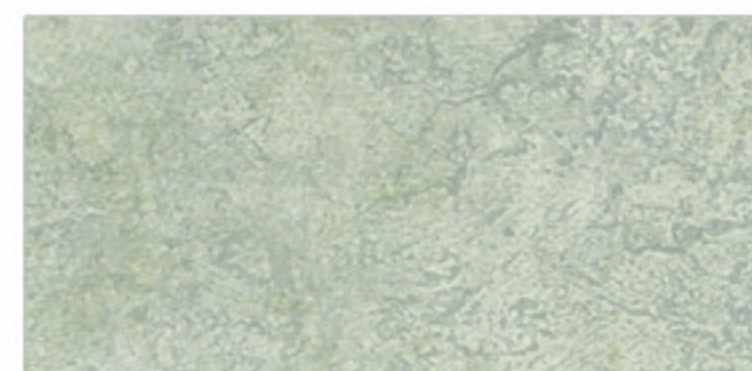
Faded Copper BW45701



Rusted Steel BW45706



Lavender Shine BW45709



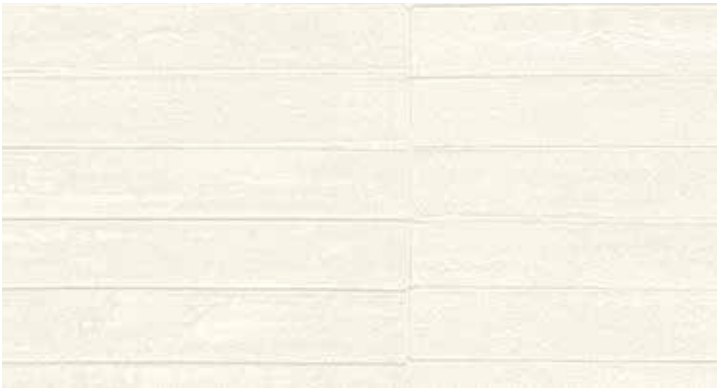
Seafoam BW45704

Mica Slat

52" - 54" Type II 20oz. Contract Wallcovering

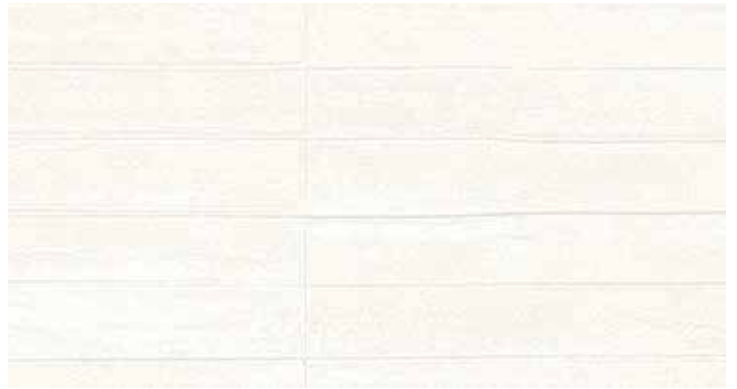
QUESTEX[®]
C O N T R A C T





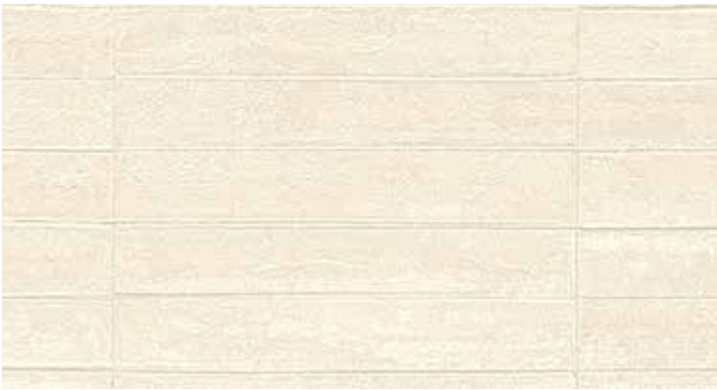
Alabaster

QX18005



Simply White

QX18010



Egg Shell

QX18015



Light Buff

QX18027



Ivory

QX18007



Hazel

QX18035



Pale Almond

QX18025



Henna

QX18017



Chrome

QX18018



Mother of Pearl

QX18000



Juniper

QX18012



Mercury Glass

QX18008



Midnight Blue

QX18002



Sterling Grey

QX18028



Horizon Blue

QX18004



Iron Mill

QX18006



Mica Slat

52"- 54" Type II 20oz. Contract Wallcovering

PHYSICAL PROPERTIES

	U.S. UNITS	METRIC UNITS
Total Weight:	20.0 oz per linear yard 13.3 oz per square yard	619 grams per linear meter 451 grams per square meter
Backing:	Nonwoven	Nonwoven
Width:	52"- 54"	1.32m - 1.37m

All patterns stocked are in 30 linear yard bolts

DESIGN INFORMATION

VERTICAL REPEAT	MATCH
Random	Random/Reversible

FEDERAL SPECIFICATIONS

Questex exceeds G.S.A Federal Specification CCC-W-408D for Type II materials using test procedures detailed in Federal Specifications CCC-T-191-B. This wallcovering passes The National Fire Protection Association NFPA286 Corner Burn Test.

FIRE HAZARD CLASSIFICATION RESULTS

- TESTED IN ACCORDANCE WITH ASTM E-84 TUNNEL TEST
- CLASS "A" FIRE RATED
- FLAME SPREAD 25
- SMOKE DEVELOPED 45

This product is intended for use in buildings that are properly designed and maintained to avoid moisture infiltration, condensation and/or accumulation at wall cavities and wall surfaces, particularly in warm, humid climates.

ANTI-MICROBIAL FEATURES

Vinyl wallcoverings contain bactericides and mildew inhibitors to discourage the growth of mold and mildew under normal conditions.

5 YEAR WARRANTY AGAINST MANUFACTURING DEFECTS

Use only adhesives and primers as recommended by the manufacturer.

PHOTO CREDITS

Shutterstock / Maya Kruchankova

COPYRIGHT

Copyright © 2017 Questex, All Rights Reserved. 465 Devon Park Drive, Wayne, PA 19087 USA
www.wallquest.com/questex - MADE IN U.S.A.



Moroccan Sisal & coordinating plain

52" - 54" Type II 20oz. Contract Wallcovering

PHYSICAL PROPERTIES

	U.S. UNITS	METRIC UNITS
Total Weight:	20.0 oz per linear yard 13.3 oz per square yard	619 grams per linear meter 451 grams per square meter
Backing:	Nonwoven	Nonwoven
Width:	52" - 54"	1.32m - 1.37m

All patterns stocked are in 30 linear yard bolts

DESIGN INFORMATION

	VERTICAL REPEAT	MATCH
BW455:	26.5cm	Straight/Reversible
BW460:	Random	Random/Reversible

FEDERAL SPECIFICATIONS

Questex exceeds G.S.A Federal Specification CCC-W-408D for Type II materials using test procedures detailed in Federal Specifications CCC-T-191-B. This wallcovering passes The National Fire Protection Association NFPA286 Corner Burn Test.

FIRE HAZARD CLASSIFICATION RESULTS

- TESTED IN ACCORDANCE WITH ASTM E-84 TUNNEL TEST
- CLASS "A" FIRE RATED
- FLAME SPREAD 25
- SMOKE DEVELOPED 20
- EN13501 (B-s1,d0)

This product is intended for use in buildings that are properly designed and maintained to avoid moisture infiltration, condensation and/or accumulation at wall cavities and wall surfaces, particularly in warm, humid climates.

ANTI-MICROBIAL FEATURES

Vinyl wallcoverings contain bactericides and mildew inhibitors to discourage the growth of mold and mildew under normal conditions.

5 YEAR WARRANTY AGAINST MANUFACTURING DEFECTS

Use only adhesives and primers as recommended by the manufacturer.

COPYRIGHT

Copyright © 2018 Questex, All Rights Reserved. 465 Devon Park Drive, Wayne, PA 19087 USA
www.wallquest.com/questex - MADE IN U.S.A.

Moroccan Sisal
with coordinating plain inside!

52" - 54" Type II 20oz. Contract Wallcovering





Yucca Green

BW45502



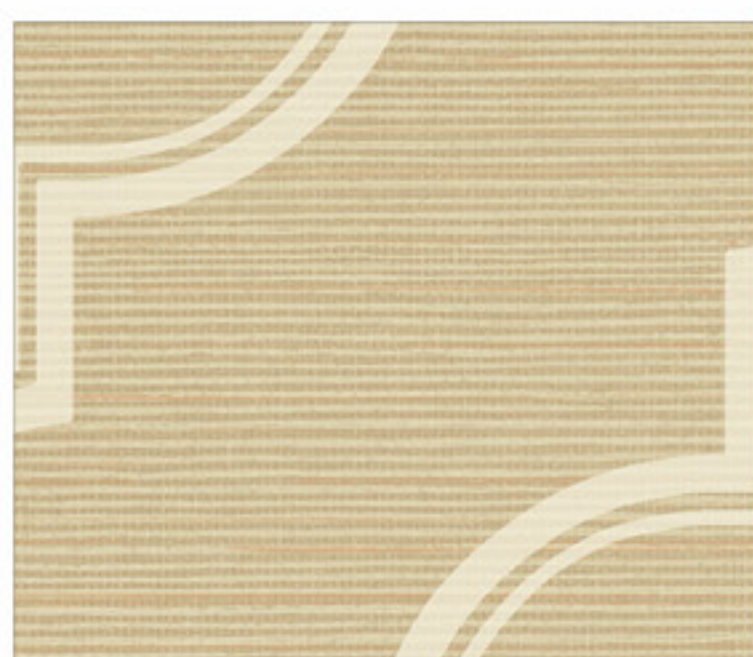
Chayote Root

BW45505



Stormy River

BW45508



Golden Grain

BW45507



Timber

BW46009

QUESTEX

Produced in a beautiful array of colors, we offer extensive choices for your next commercial project.

QUESTEX

Produced in a beautiful array of colors, we offer extensive choices for your next commercial project.



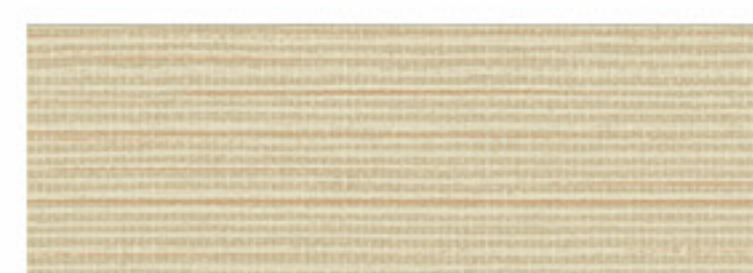
Jicama

BW46005



River

BW46008



Fine Grains

BW46007



Twisted Twine

BW46001



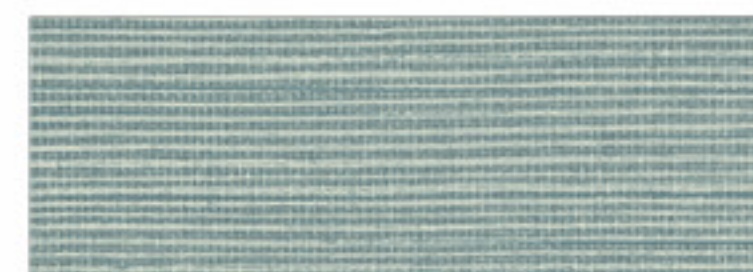
Golden Wheat

BW46015



Agave

BW46002



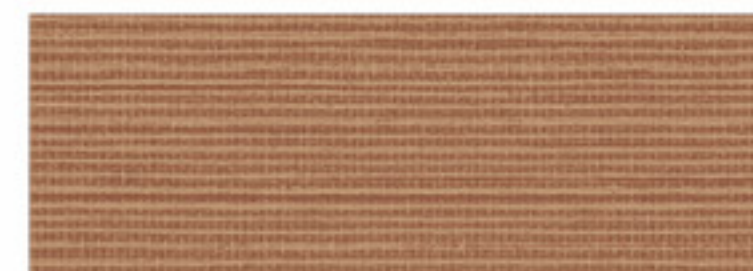
Cool Breeze

BW46014



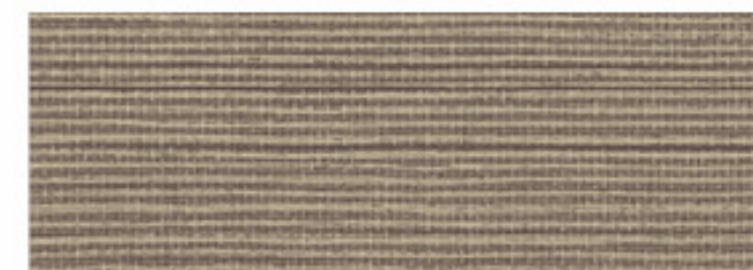
Ship Rope

BW46004



Rooted

BW46011



Smokey Oats

BW46006

Radiant Grasscloth

52" - 54" Type II 20oz. Contract Wallcovering

QUESTEX[®]
CONTRACT





Porcelain

QX16800



Apricot

QX16815



Sand Dollar

QX16810



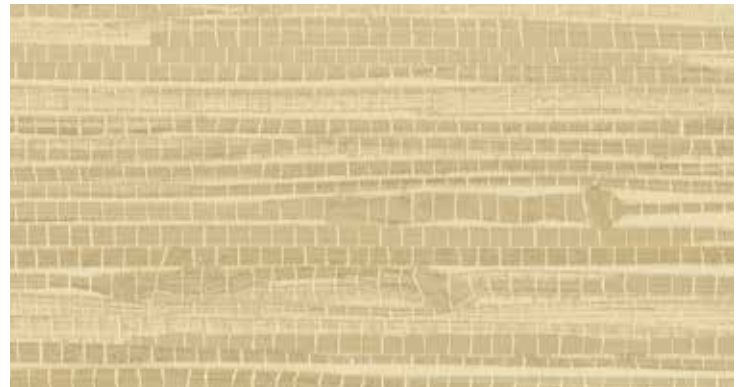
French Grey

QX16808



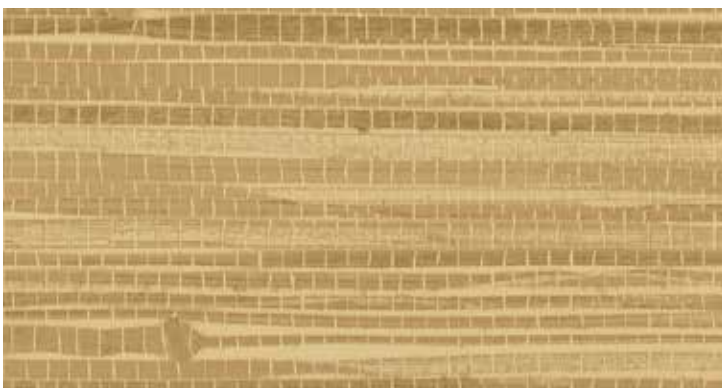
Shortbread

QX16805



Hazelwood

QX16825



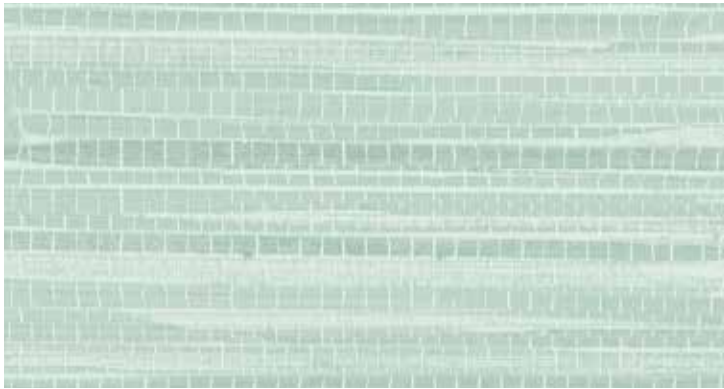
Basket Weave

QX16835



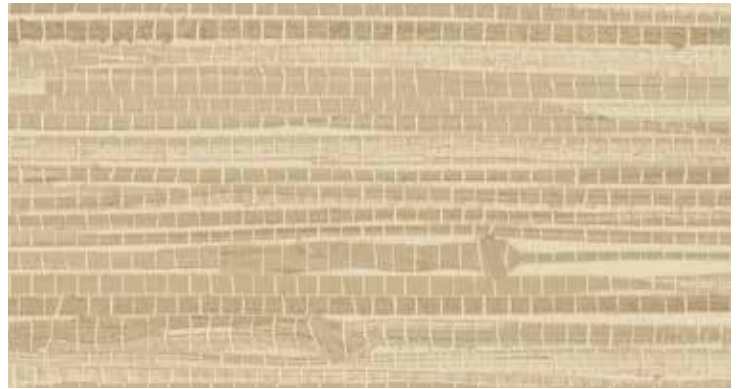
Pashmina

QX16818



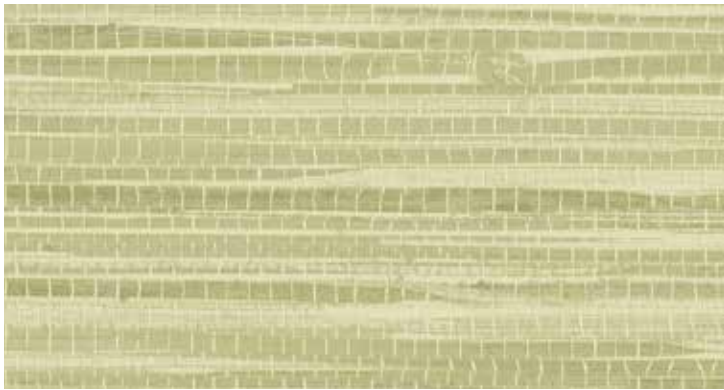
Surf

QX16802



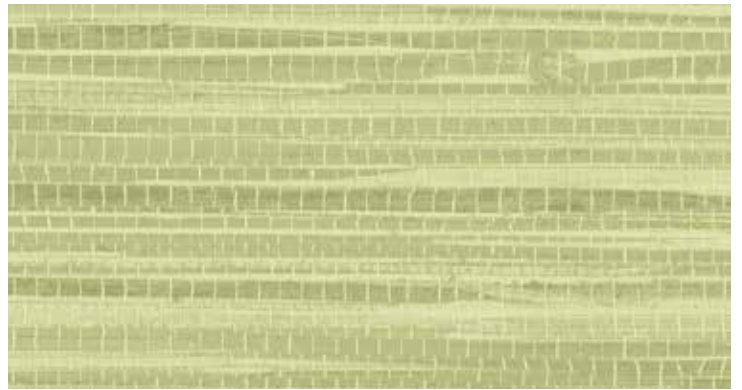
Barley

QX16807



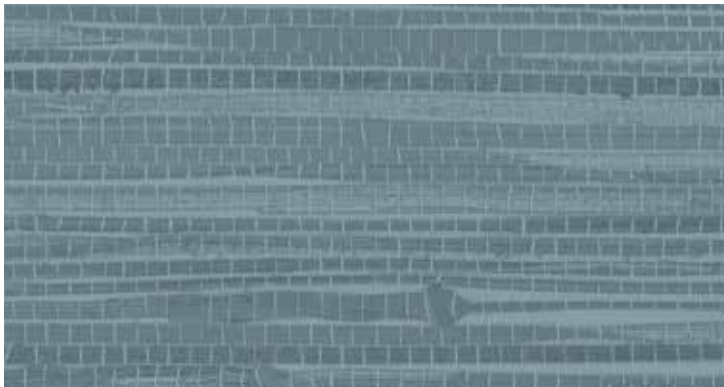
Moss

QX16804



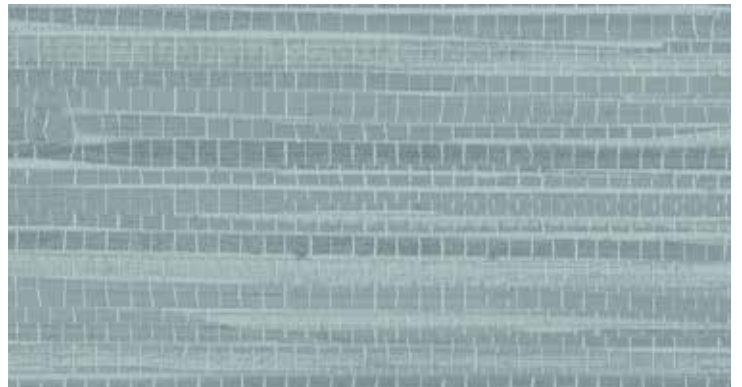
Pasture

QX16814



Blue Smoke

QX16822



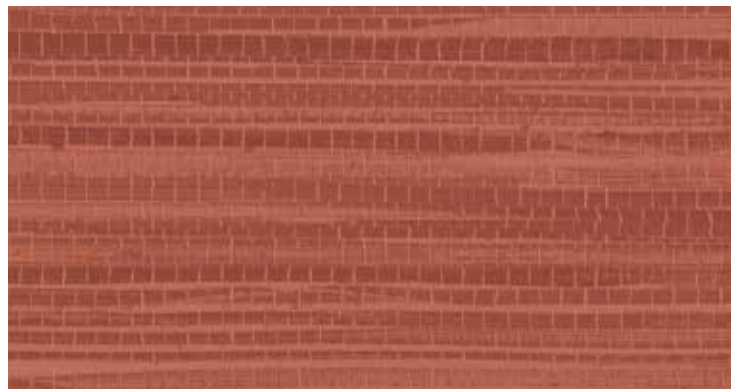
Serenity

QX16812



Red Oxide

QX16811



Berry

QX16801



Radiant Grasscloth

52" - 54" Type II 20oz. Contract Wallcovering

PHYSICAL PROPERTIES

	U.S. UNITS	METRIC UNITS
Total Weight:	20.0 oz per linear yard 13.3 oz per square yard	619 grams per linear meter 451 grams per square meter
Backing:	Nonwoven	Nonwoven
Width:	52" - 54"	1.32m - 1.37m

All patterns stocked are in 30 linear yard bolts

DESIGN INFORMATION

VERTICAL REPEAT	MATCH
Random	Random/Reversible

DESIGNED TO REPLICATE THE IMPERFECT MATCH AND SLIGHT VARIATIONS IN COLOR OF REAL GRASSCLOTH

FEDERAL SPECIFICATIONS

Questex exceeds G.S.A Federal Specification CCC-W-408D for Type II materials using test procedures detailed in Federal Specifications CCC-T-191-B. This wallcovering passes The National Fire Protection Association NFPA286 Corner Burn Test.

FIRE HAZARD CLASSIFICATION RESULTS

- TESTED IN ACCORDANCE WITH ASTM E-84 TUNNEL TEST
- CLASS "A" FIRE RATED
- FLAME SPREAD 25
- SMOKE DEVELOPED 45

This product is intended for use in buildings that are properly designed and maintained to avoid moisture infiltration, condensation and/or accumulation at wall cavities and wall surfaces, particularly in warm, humid climates.

ANTI-MICROBIAL FEATURES

Vinyl wallcoverings contain bactericides and mildew inhibitors to discourage the growth of mold and mildew under normal conditions.

5 YEAR WARRANTY AGAINST MANUFACTURING DEFECTS

Use only adhesives and primers as recommended by the manufacturer.

PHOTO CREDITS

Shutterstock

COPYRIGHT

Copyright © 2016 Questex, All Rights Reserved. 465 Devon Park Drive, Wayne, PA 19087 USA
www.wallquest.com/questex - MADE IN U.S.A.



Roma Leather

52"- 54" Type II 20oz. Contract Wallcovering

PHYSICAL PROPERTIES

	U.S. UNITS	METRIC UNITS
Total Weight:	20.0 oz per linear yard 13.3 oz per square yard	619 grams per linear meter 451 grams per square meter
Backing:	Nonwoven	Nonwoven
Width:	52" - 54"	1.32m - 1.37m

All patterns stocked are in 30 linear yard bolts

DESIGN INFORMATION

VERTICAL REPEAT	MATCH
Random	Random/Reversible

FEDERAL SPECIFICATIONS

Questex exceeds G.S.A Federal Specification CCC-W-408D for Type II materials using test procedures detailed in Federal Specifications CCC-T-191-B. This wallcovering passes The National Fire Protection Association NFPA286 Corner Burn Test.

FIRE HAZARD CLASSIFICATION RESULTS

- TESTED IN ACCORDANCE WITH ASTM E-84 TUNNEL TEST
- CLASS "A" FIRE RATED
- FLAME SPREAD 25
- SMOKE DEVELOPED 20
- EN13501 (B-s1,d0)

This product is intended for use in buildings that are properly designed and maintained to avoid moisture infiltration, condensation and/or accumulation at wall cavities and wall surfaces, particularly in warm, humid climates.

ANTI-MICROBIAL FEATURES

Vinyl wallcoverings contain bactericides and mildew inhibitors to discourage the growth of mold and mildew under normal conditions.

5 YEAR WARRANTY AGAINST MANUFACTURING DEFECTS

Use only adhesives and primers as recommended by the manufacturer.

COPYRIGHT

Copyright © 2018 Questex, All Rights Reserved. 465 Devon Park Drive, Wayne, PA 19087 USA
www.wallquest.com/questex - MADE IN U.S.A.

Roma Leather

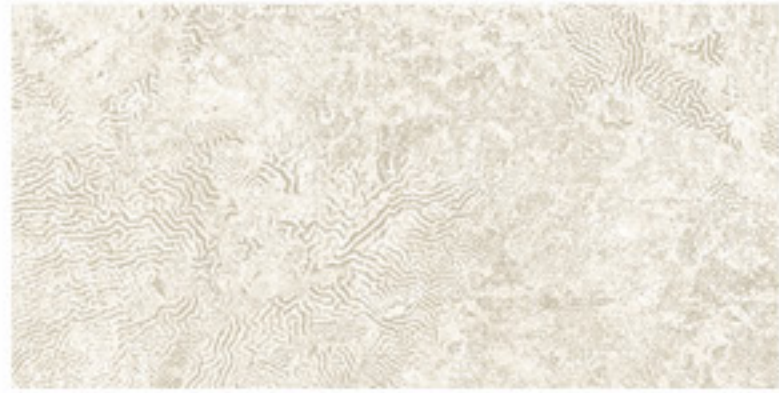
52"- 54" Type II 20oz. Contract Wallcovering





Buff

BV35615



Sea Salt

BV35610



Harvest

BV35625



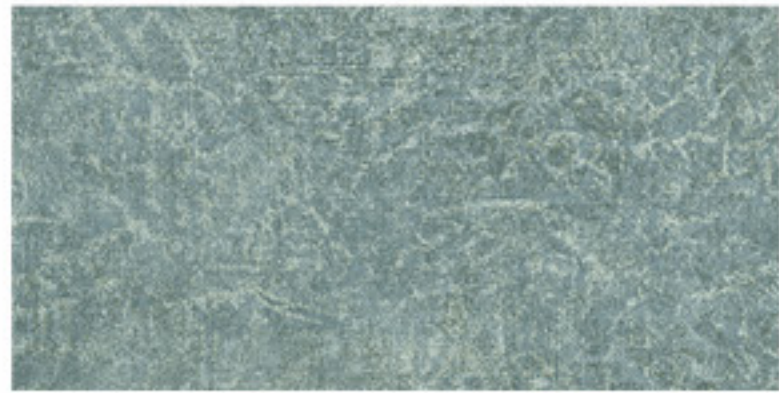
Balanced

BV35628



Soft Maple

BV35605



Marine

BV35604



Walnut

BV35607



Soho

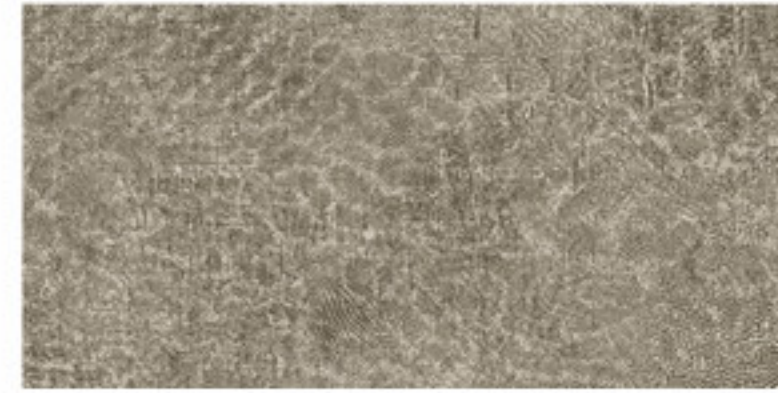
BV35618

QUESTEX

Produced in a beautiful array of colors, we offer extensive choices for your next commercial project.

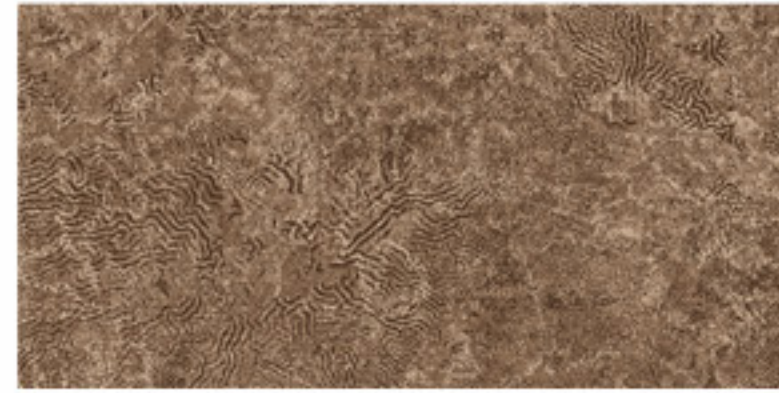
QUESTEX

Produced in a beautiful array of colors, we offer extensive choices for your next commercial project.



Smokey Leather

BV35608



Saddle

BV35616



Tawny

BV35606



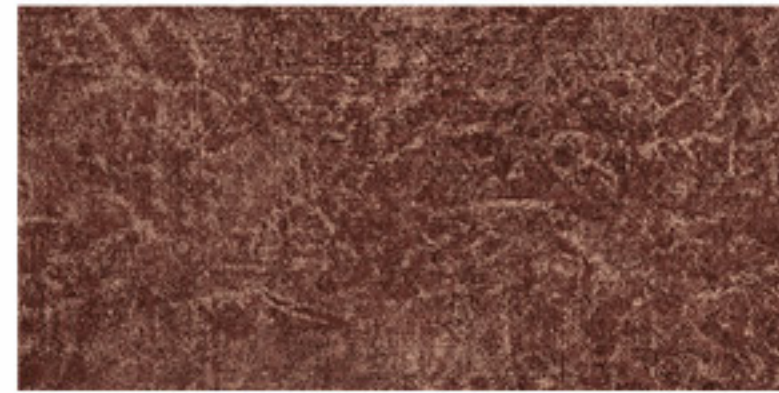
Mahogany

BV35626



Newport

BV35602



Cognac

BV35636



Rawhide

BV35601



Black Suede

BV35600



Sandstone

52"- 54" Type II 20oz. Contract Wallcovering

PHYSICAL PROPERTIES

	U.S. UNITS	METRIC UNITS
Total Weight:	20.0 oz per linear yard 13.3 oz per square yard	619 grams per linear meter 451 grams per square meter
Backing:	Nonwoven	Nonwoven
Width:	52"- 54"	1.32m - 1.37m

All patterns stocked are in 30 linear yard bolts

DESIGN INFORMATION

VERTICAL REPEAT	MATCH
Random	Random/Reversible

FEDERAL SPECIFICATIONS

Questex exceeds G.S.A Federal Specification CCC-W-408D for Type II materials using test procedures detailed in Federal Specifications CCC-T-191-B. This wallcovering passes The National Fire Protection Association NFPA286 Corner Burn Test.

FIRE HAZARD CLASSIFICATION RESULTS

- TESTED IN ACCORDANCE WITH ASTM E-84 TUNNEL TEST
- CLASS "A" FIRE RATED
- FLAME SPREAD 25
- SMOKE DEVELOPED 45

This product is intended for use in buildings that are properly designed and maintained to avoid moisture infiltration, condensation and/or accumulation at wall cavities and wall surfaces, particularly in warm, humid climates.

ANTI-MICROBIAL FEATURES

Vinyl wallcoverings contain bactericides and mildew inhibitors to discourage the growth of mold and mildew under normal conditions.

5 YEAR WARRANTY AGAINST MANUFACTURING DEFECTS

Use only adhesives and primers as recommended by the manufacturer.

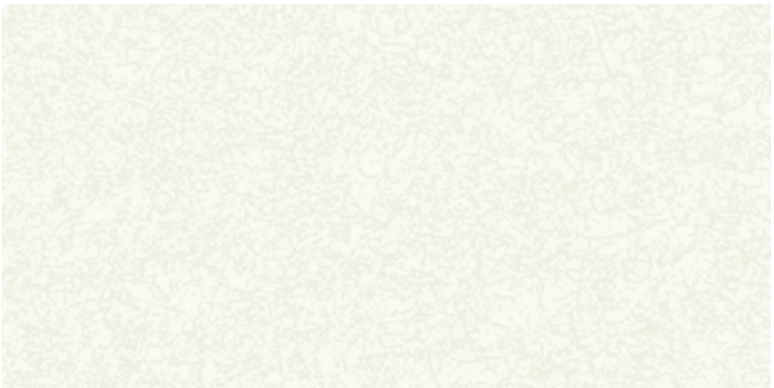
COPYRIGHT

Copyright © 2018 Questex, All Rights Reserved. 465 Devon Park Drive, Wayne, PA 19087 USA
www.wallquest.com/questex - MADE IN U.S.A.

Sandstone

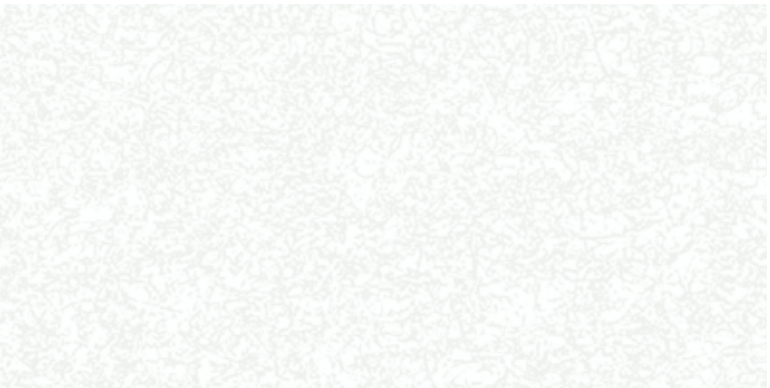
52"- 54" Type II 20oz. Contract Wallcovering





Fine Grain

QX20502



Crystal White

QX20501



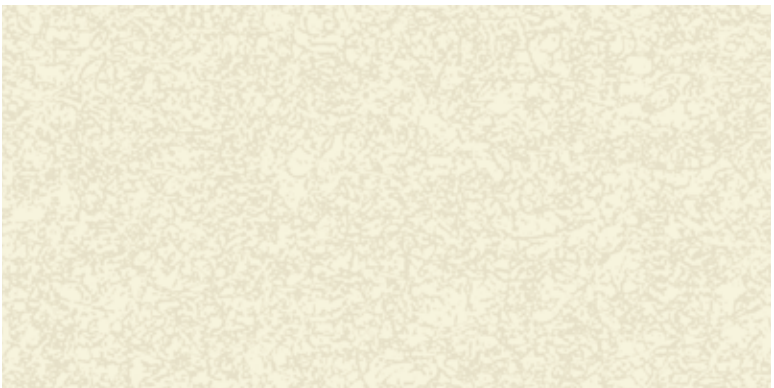
Sand Grain

QX20505



Alabaster

QX20506



Washed Sand

QX20503



Sand Dunes

QX20507



Desert Air

QX20504



Antelope Canyon

QX20508

QUESTEX

Produced in a beautiful array of colors, we offer extensive choices for your next commercial project.



Limestone

QX20509



Silver Quartz

QX20513



Tidal Flats

QX20510



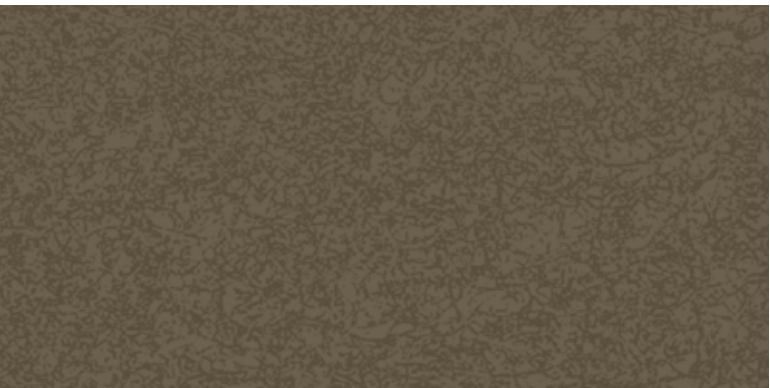
Reservoir Blue

QX20514



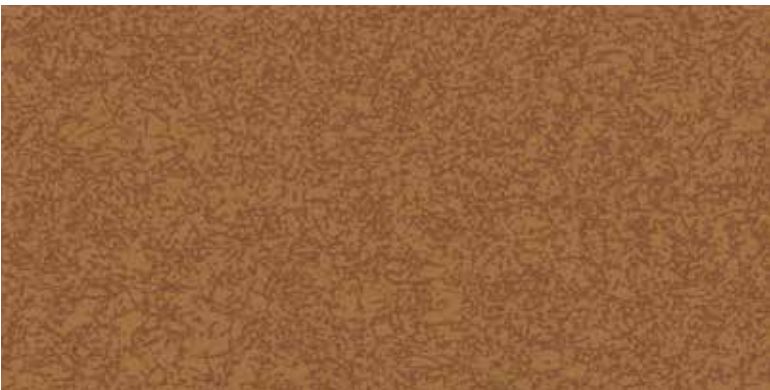
Sand Storm

QX20511



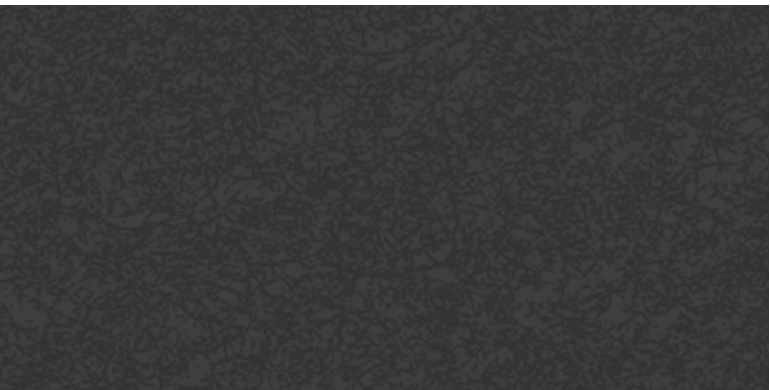
Dark Amber

QX20515



Southwest Sunset

QX20512



Desert Night

QX20516

QUESTEX

Produced in a beautiful array of colors, we offer extensive choices for your next commercial project.



Silk Damask & coordinating plain

52" - 54" Type II 20oz. Contract Wallcovering

PHYSICAL PROPERTIES

	U.S. UNITS	METRIC UNITS
Total Weight:	20.0 oz per linear yard 13.3 oz per square yard	619 grams per linear meter 451 grams per square meter
Backing:	Nonwoven	Nonwoven
Width:	52" - 54"	1.32m - 1.37m

All patterns stocked are in 30 linear yard bolts

DESIGN INFORMATION

	VERTICAL REPEAT	MATCH
BW451:	53cm	Straight
BW456:	Random	Random/Reversible

FEDERAL SPECIFICATIONS

Questex exceeds G.S.A Federal Specification CCC-W-408D for Type II materials using test procedures detailed in Federal Specifications CCC-T-191-B. This wallcovering passes The National Fire Protection Association NFPA286 Corner Burn Test.

FIRE HAZARD CLASSIFICATION RESULTS

- TESTED IN ACCORDANCE WITH ASTM E-84 TUNNEL TEST
- CLASS "A" FIRE RATED
- FLAME SPREAD 25
- SMOKE DEVELOPED 20
- EN13501 (B-s1,d0)

This product is intended for use in buildings that are properly designed and maintained to avoid moisture infiltration, condensation and/or accumulation at wall cavities and wall surfaces, particularly in warm, humid climates.

ANTI-MICROBIAL FEATURES

Vinyl wallcoverings contain bactericides and mildew inhibitors to discourage the growth of mold and mildew under normal conditions.

5 YEAR WARRANTY AGAINST MANUFACTURING DEFECTS

Use only adhesives and primers as recommended by the manufacturer.

COPYRIGHT

Copyright © 2018 Questex, All Rights Reserved. 465 Devon Park Drive, Wayne, PA 19087 USA
www.wallquest.com/questex - MADE IN U.S.A.

Silk Damask
with coordinating plain inside!

52" - 54" Type II 20oz. Contract Wallcovering





Silver Silk

BW45108



Daydream

BW45102



Sand Storm

BW45105



Metallic Cocoa

BW45101

QUESTEX

Produced in a beautiful array of colors, we offer extensive choices for your next commercial project.

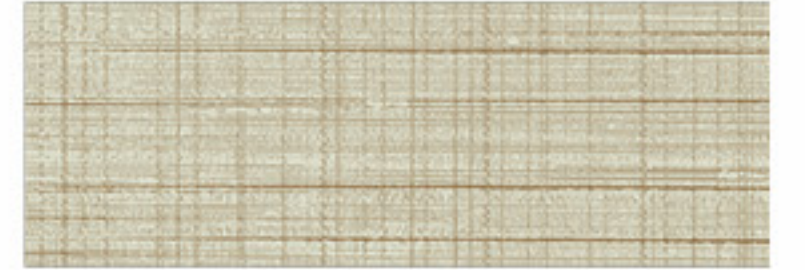
QUESTEX

Produced in a beautiful array of colors, we offer extensive choices for your next commercial project.



Silk Pearl

BW45608



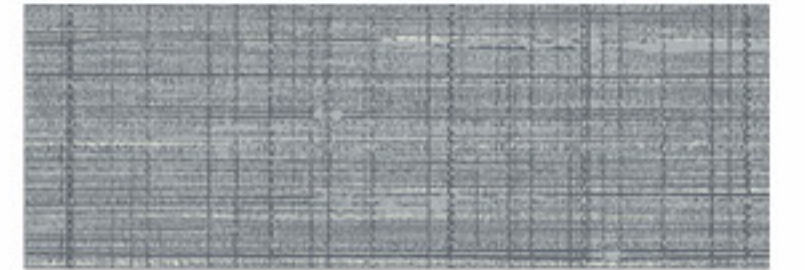
Sand Dune

BW45615



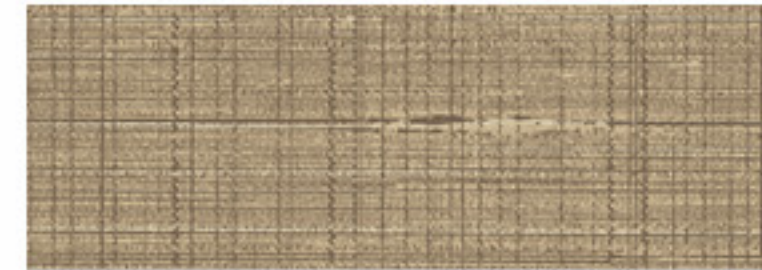
Gold Tassel

BW45605



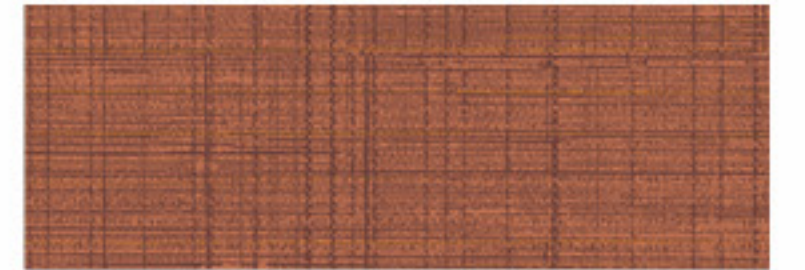
Blue Jeans

BW45602



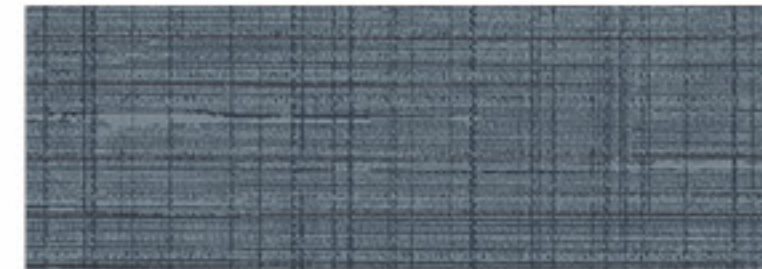
Cocoa

BW45607



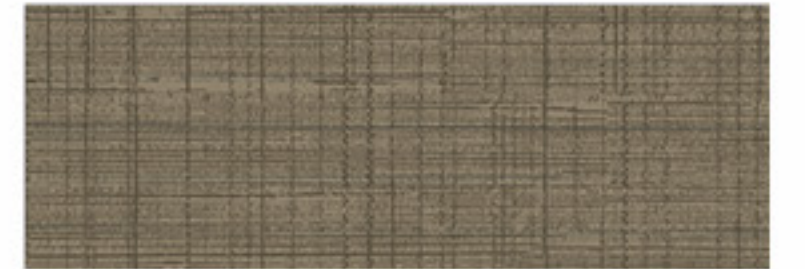
Rich Henna

BW45601



Royal Blue

BW45612



Graphite

BW45606



Dapper

BW45618



Summer Sisal

52"- 54" Type II 20oz. Contract Wallcovering

PHYSICAL PROPERTIES

	U.S. UNITS	METRIC UNITS
Total Weight:	20.0 oz per linear yard 13.3 oz per square yard	619 grams per linear meter 451 grams per square meter
Backing:	Nonwoven	Nonwoven
Width:	52"- 54"	1.32m - 1.37m

All patterns stocked are in 30 linear yard bolts

DESIGN INFORMATION

VERTICAL REPEAT	MATCH
Random	Random/Reversible

FEDERAL SPECIFICATIONS

Questex exceeds G.S.A Federal Specification CCC-W-408D for Type II materials using test procedures detailed in Federal Specifications CCC-T-191-B. This wallcovering passes The National Fire Protection Association NFPA286 Corner Burn Test.

FIRE HAZARD CLASSIFICATION RESULTS

- TESTED IN ACCORDANCE WITH ASTM E-84 TUNNEL TEST
- CLASS "A" FIRE RATED
- FLAME SPREAD 25
- SMOKE DEVELOPED 45

This product is intended for use in buildings that are properly designed and maintained to avoid moisture infiltration, condensation and/or accumulation at wall cavities and wall surfaces, particularly in warm, humid climates.

ANTI-MICROBIAL FEATURES

Vinyl wallcoverings contain bactericides and mildew inhibitors to discourage the growth of mold and mildew under normal conditions.

5 YEAR WARRANTY AGAINST MANUFACTURING DEFECTS

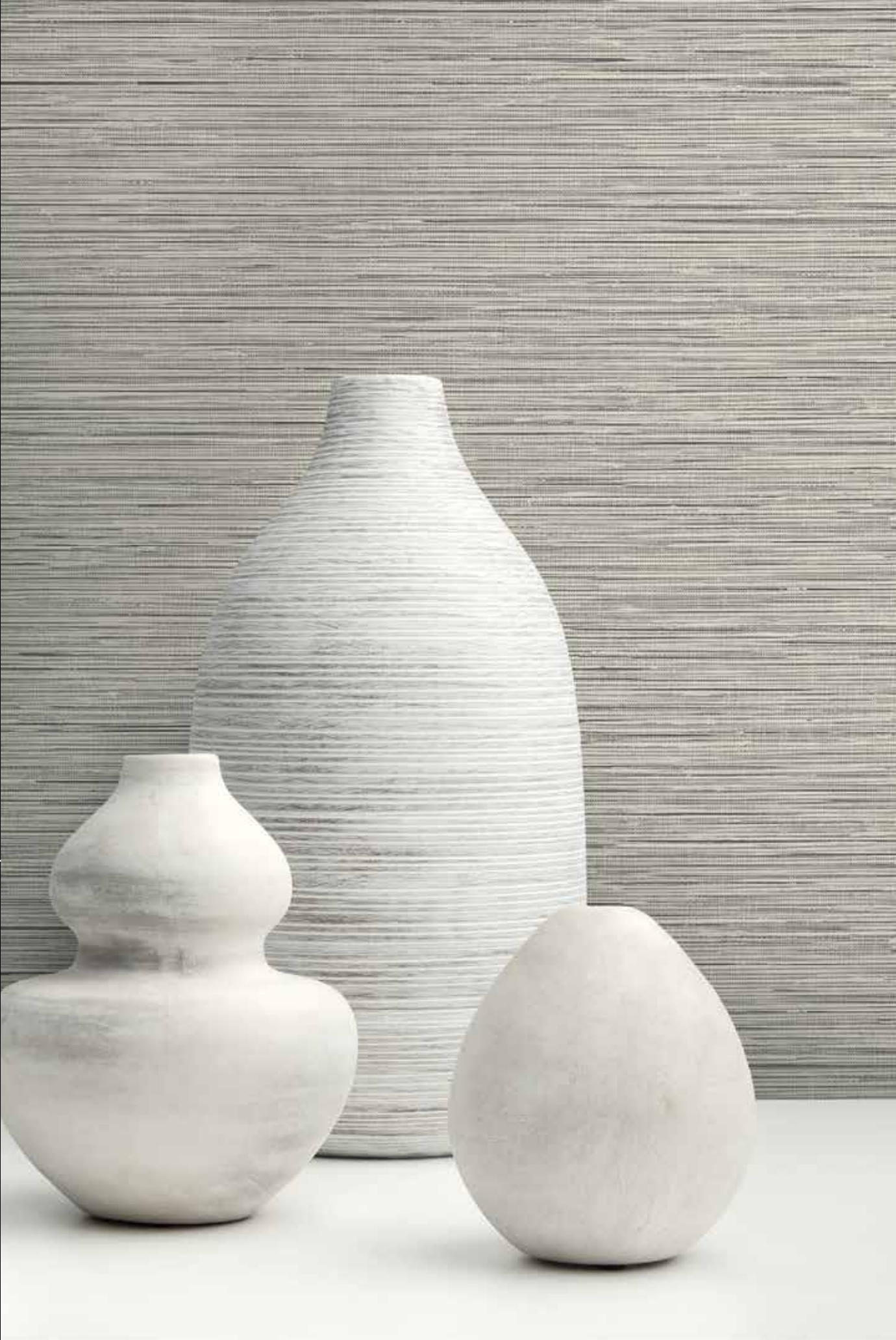
Use only adhesives and primers as recommended by the manufacturer.

COPYRIGHT

Copyright © 2018 Questex, All Rights Reserved. 465 Devon Park Drive, Wayne, PA 19087 USA
www.wallquest.com/questex - MADE IN U.S.A.

Summer Sisal

52"- 54" Type II 20oz. Contract Wallcovering





Light Breeze



Sisal Hemp



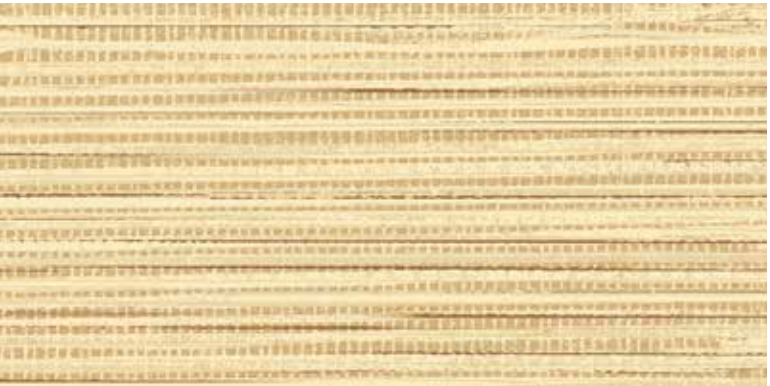
Twine



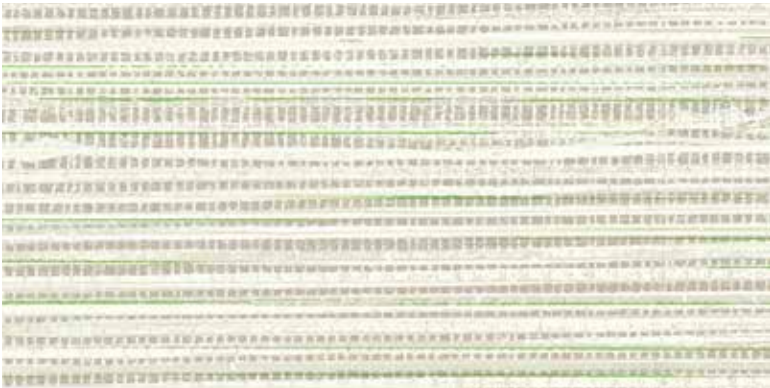
Sunrise



Sea Stone



Sandstone



Seagrass



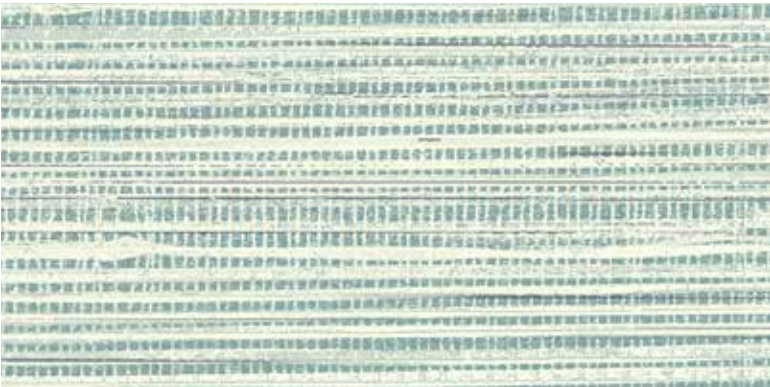
Husk

QUESTEX

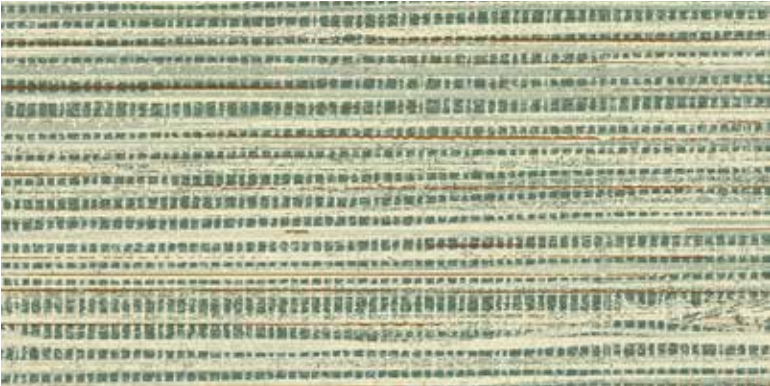
Produced in a beautiful array of colors, we offer extensive choices for your next commercial project.

QUESTEX

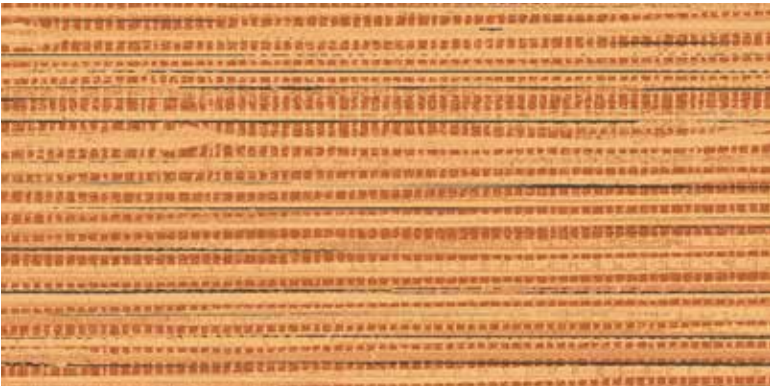
Produced in a beautiful array of colors, we offer extensive choices for your next commercial project.



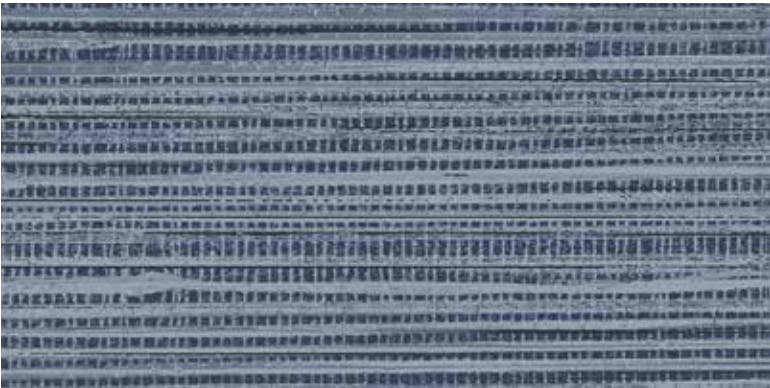
Agave



Rockweed



Coastline



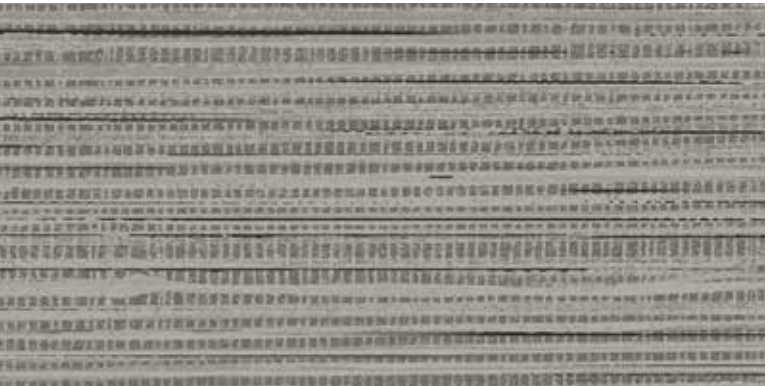
Admiral



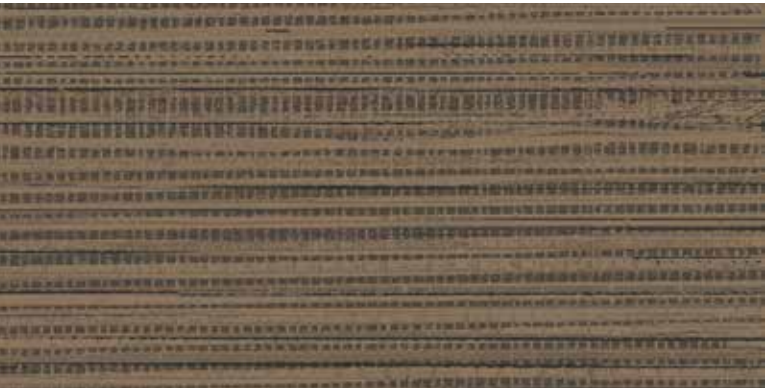
Harbor Grey



Rainfall



Volcanic Ash



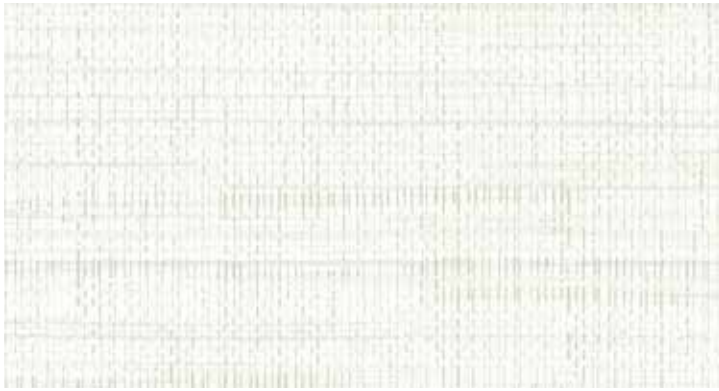
Driftwood

Tailor Made

52" - 54" Type II 20oz. Contract Wallcovering

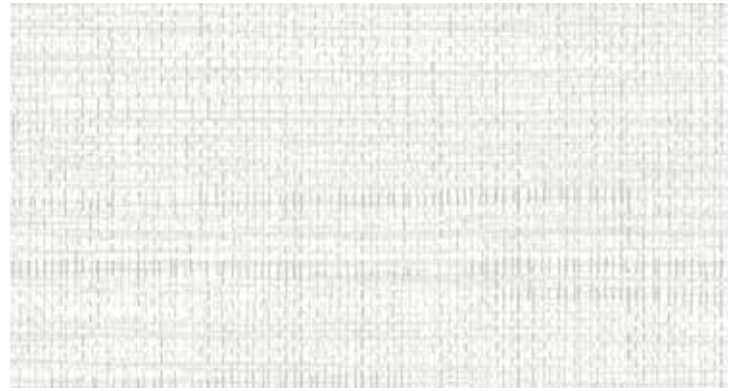
QUESTEX[®]
CONTRACT





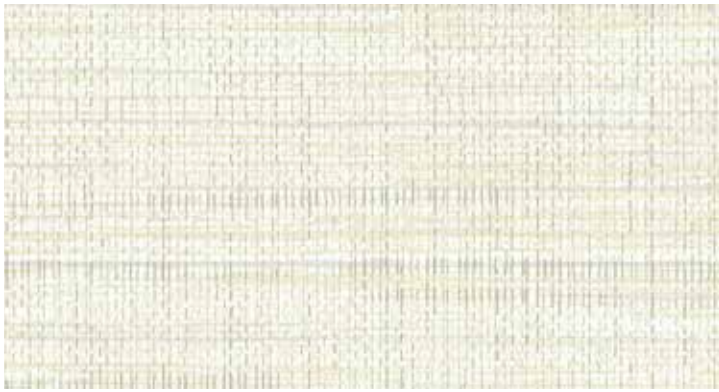
Porcelain

QX19522



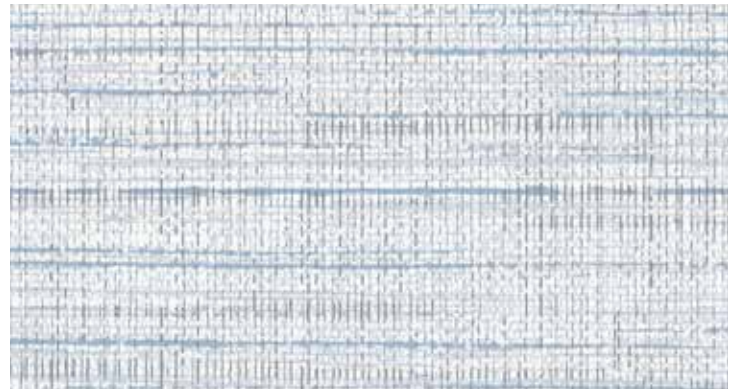
Powder White

QX19521



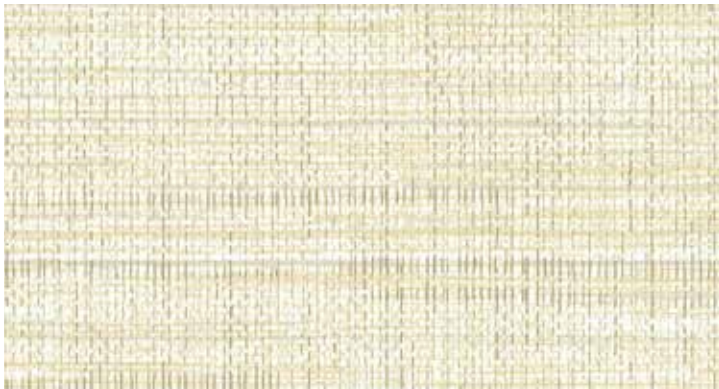
Ivory

QX19563



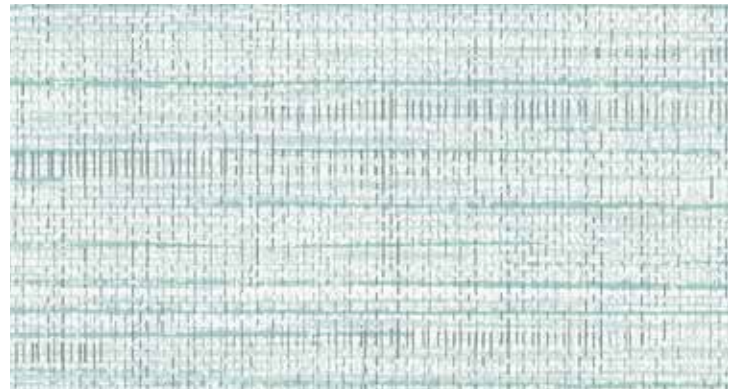
Cornflower Blue

QX19507



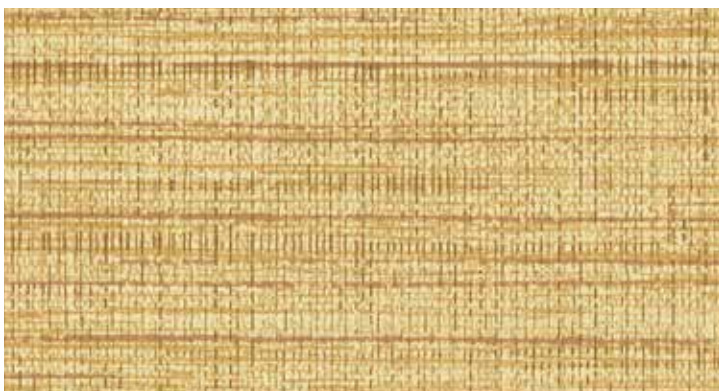
Light Ginger

QX19515



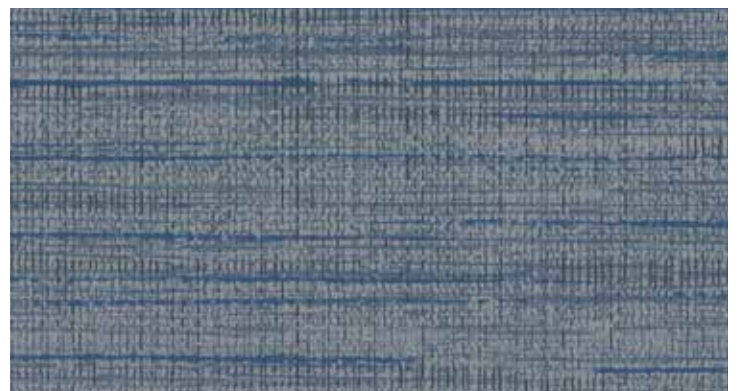
Frost Blue

QX19556



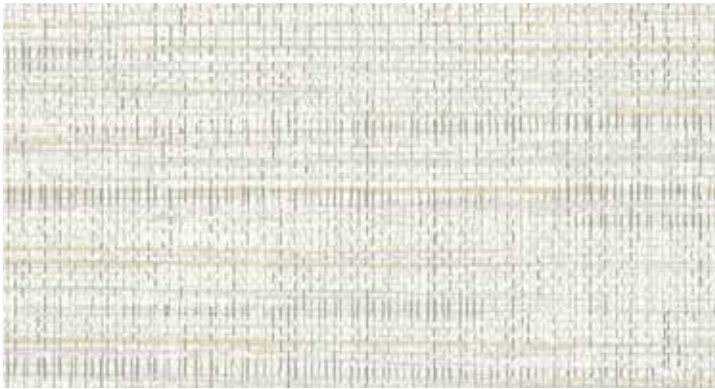
Harvest

QX19531



Midnight Blue

QX19530



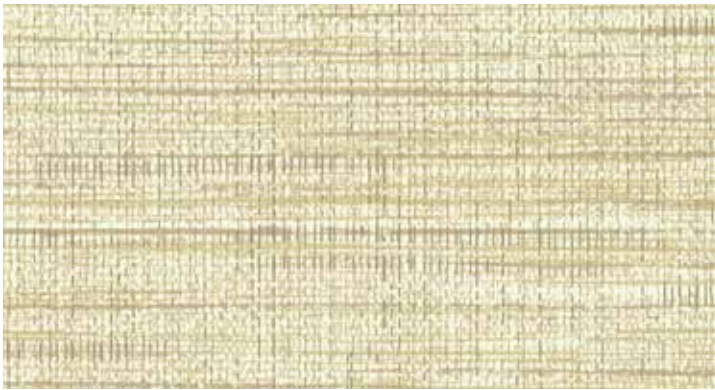
Oyster

QX19538



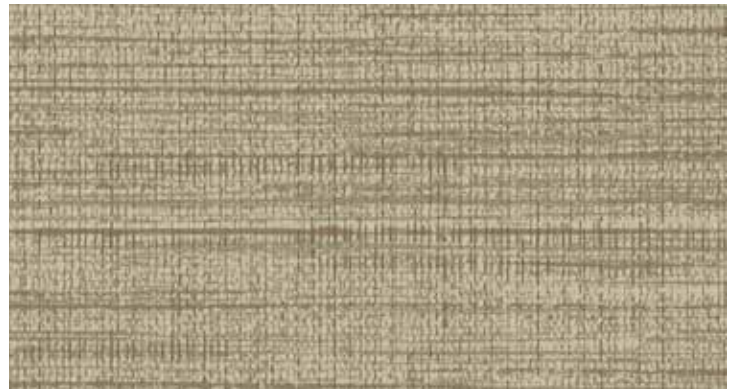
Morrel

QX19553



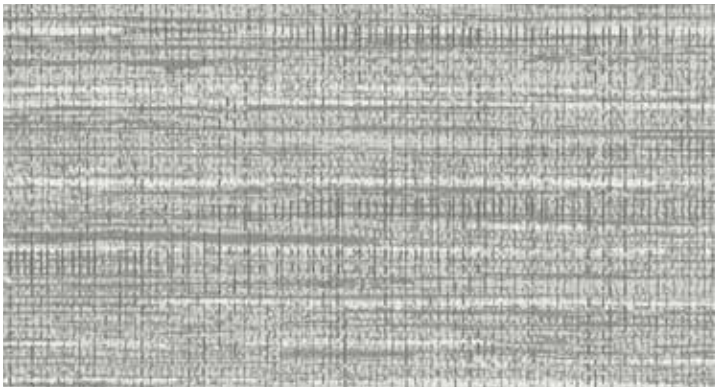
Rye Grass

QX19517



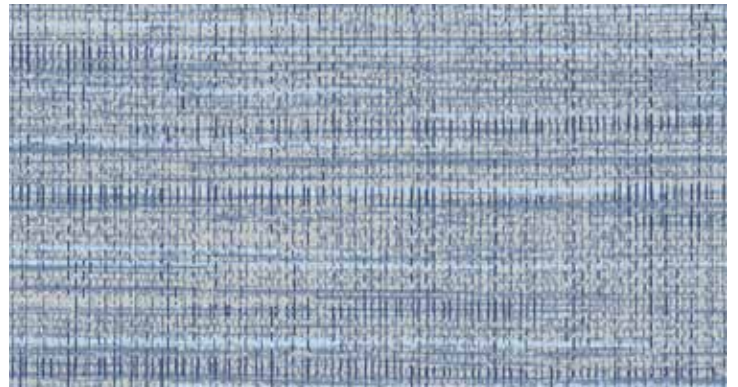
Truffle

QX19532



Admiral

QX19554



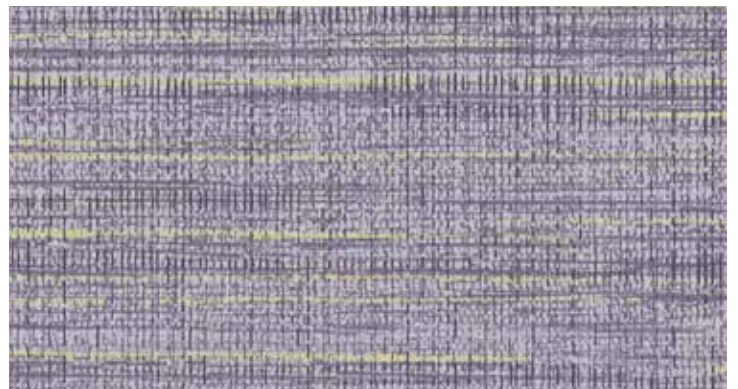
Denim

QX19555



Walnut Shell

QX19560



Royal Purple

QX19509



Tailor Made

52"- 54" Type II 20oz. Contract Wallcovering

PHYSICAL PROPERTIES

	U.S. UNITS	METRIC UNITS
Total Weight:	20.0 oz per linear yard 13.3 oz per square yard	619 grams per linear meter 451 grams per square meter
Backing:	Nonwoven	Nonwoven
Width:	52" - 54"	1.32m - 1.37m

All patterns stocked are in 30 linear yard bolts

DESIGN INFORMATION

VERTICAL REPEAT	MATCH
Random	Random/Reversible

FEDERAL SPECIFICATIONS

Questex exceeds G.S.A Federal Specification CCC-W-408D for Type II materials using test procedures detailed in Federal Specifications CCC-T-191-B. This wallcovering passes The National Fire Protection Association NFPA286 Corner Burn Test.

FIRE HAZARD CLASSIFICATION RESULTS

- TESTED IN ACCORDANCE WITH ASTM E-84 TUNNEL TEST
- CLASS "A" FIRE RATED
- FLAME SPREAD 25
- SMOKE DEVELOPED 45

This product is intended for use in buildings that are properly designed and maintained to avoid moisture infiltration, condensation and/or accumulation at wall cavities and wall surfaces, particularly in warm, humid climates.

ANTI-MICROBIAL FEATURES

Vinyl wallcoverings contain bactericides and mildew inhibitors to discourage the growth of mold and mildew under normal conditions.

5 YEAR WARRANTY AGAINST MANUFACTURING DEFECTS

Use only adhesives and primers as recommended by the manufacturer.

COPYRIGHT

Copyright © 2016 Questex, All Rights Reserved. 465 Devon Park Drive, Wayne, PA 19087 USA
www.wallquest.com/questex - MADE IN U.S.A.

Urban Cork

52" - 54" Type II 20oz. Contract Wallcovering

QUESTEX[®]
CONTRACT





Alder

QX17006



Stone Ash

QX17008



Teak

QX17005



Shale Oak

QX17036



Elm

QX17015



River Rock

QX17018



Golden Shale

QX17025



Sandstone

QX17046



Cyan Ocean

QX17014



Volcanic Ash

QX17020



Moonstone

QX17028



Rosewood

QX17001



Sand Oak

QX17026



Blue Pine

QX17002



Pacific Opal

QX17004



Aspen

QX17010



Urban Cork

52"- 54" Type II 20oz. Contract Wallcovering

PHYSICAL PROPERTIES

	U.S. UNITS	METRIC UNITS
Total Weight:	20.0 oz per linear yard 13.3 oz per square yard	619 grams per linear meter 451 grams per square meter
Backing:	Nonwoven	Nonwoven
Width:	52" - 54"	1.32m - 1.37m

All patterns stocked are in 30 linear yard bolts

DESIGN INFORMATION

VERTICAL REPEAT	MATCH
Random	Random/Reversible

FEDERAL SPECIFICATIONS

Questex exceeds G.S.A Federal Specification CCC-W-408D for Type II materials using test procedures detailed in Federal Specifications CCC-T-191-B. This wallcovering passes The National Fire Protection Association NFPA286 Corner Burn Test.

FIRE HAZARD CLASSIFICATION RESULTS

- TESTED IN ACCORDANCE WITH ASTM E-84 TUNNEL TEST
- CLASS "A" FIRE RATED
- FLAME SPREAD 25
- SMOKE DEVELOPED 45

This product is intended for use in buildings that are properly designed and maintained to avoid moisture infiltration, condensation and/or accumulation at wall cavities and wall surfaces, particularly in warm, humid climates.

ANTI-MICROBIAL FEATURES

Vinyl wallcoverings contain bactericides and mildew inhibitors to discourage the growth of mold and mildew under normal conditions.

5 YEAR WARRANTY AGAINST MANUFACTURING DEFECTS

Use only adhesives and primers as recommended by the manufacturer.

COPYRIGHT

Copyright © 2016 Questex, All Rights Reserved. 465 Devon Park Drive, Wayne, PA 19087 USA
www.wallquest.com/questex - MADE IN U.S.A.



Woven Raffia

52"- 54" Type II 20oz. Contract Wallcovering

PHYSICAL PROPERTIES

	U.S. UNITS	METRIC UNITS
Total Weight:	20.0 oz per linear yard 13.3 oz per square yard	619 grams per linear meter 451 grams per square meter
Backing:	Nonwoven	Nonwoven
Width:	52" - 54"	1.32m - 1.37m

All patterns stocked are in 30 linear yard bolts

DESIGN INFORMATION

VERTICAL REPEAT	MATCH
Random	Random/Reversible

FEDERAL SPECIFICATIONS

Questex exceeds G.S.A Federal Specification CCC-W-408D for Type II materials using test procedures detailed in Federal Specifications CCC-T-191-B. This wallcovering passes The National Fire Protection Association NFPA286 Corner Burn Test.

FIRE HAZARD CLASSIFICATION RESULTS

- TESTED IN ACCORDANCE WITH ASTM E-84 TUNNEL TEST
- CLASS "A" FIRE RATED
- FLAME SPREAD 25
- SMOKE DEVELOPED 20
- EN13501 (B-s1,d0)

This product is intended for use in buildings that are properly designed and maintained to avoid moisture infiltration, condensation and/or accumulation at wall cavities and wall surfaces, particularly in warm, humid climates.

ANTI-MICROBIAL FEATURES

Vinyl wallcoverings contain bactericides and mildew inhibitors to discourage the growth of mold and mildew under normal conditions.

5 YEAR WARRANTY AGAINST MANUFACTURING DEFECTS

Use only adhesives and primers as recommended by the manufacturer.

COPYRIGHT

Copyright © 2018 Questex, All Rights Reserved. 465 Devon Park Drive, Wayne, PA 19087 USA
www.wallquest.com/questex - MADE IN U.S.A.

Woven Raffia

52"- 54" Type II 20oz. Contract Wallcovering





Alabaster

BV35310



Sandalwood

BV35307



Softly Lit

BV35305



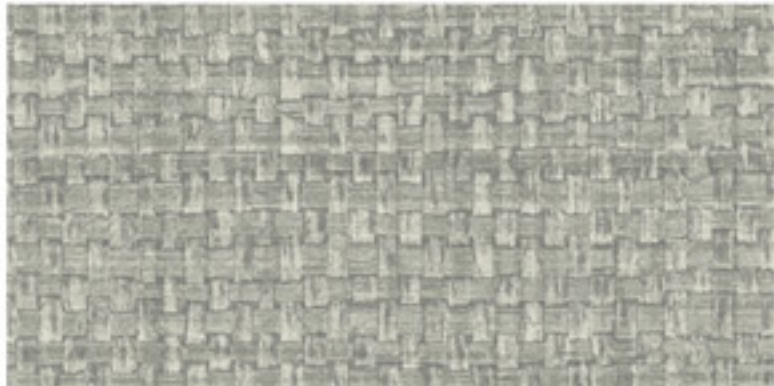
Light Pewter

BV35308



Fawn

BV35315



Harbor Grey

BV35318



Grey Matters

BV35328



Volcanic Ash

BV35300

QUESTEX

Produced in a beautiful array of colors, we offer extensive choices for your next commercial project.

QUESTEX

Produced in a beautiful array of colors, we offer extensive choices for your next commercial project.



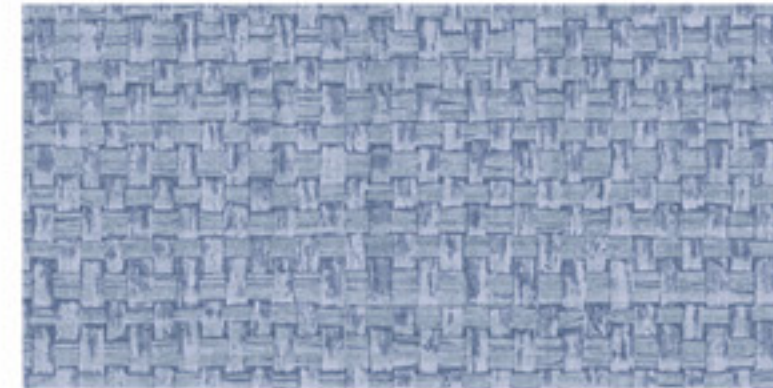
Spring Mint

BV35304



Flaxseed

BV35316



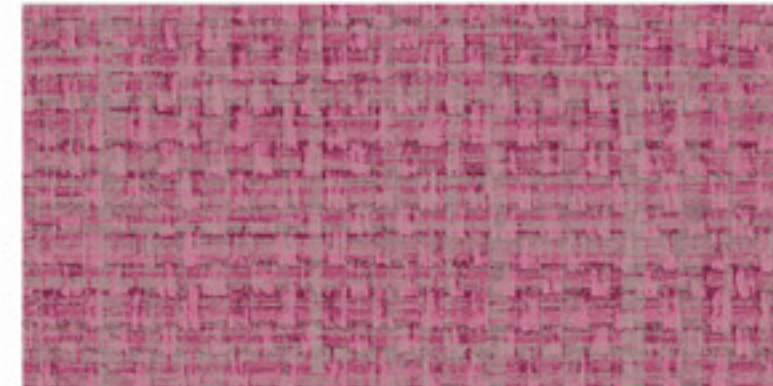
Periwinkle

BV35302



Cumin

BV35306



Boysenberry

BV35301



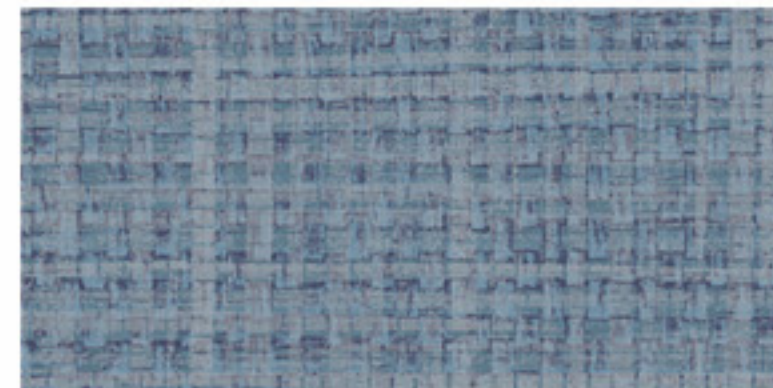
Russet

BV35311



Plum

BV35309



Navy Shores

BV35312