

52"- 54" Type II 20oz. Contract Wallcovering

PHYSICAL PROPERTIES

	U.S. UNITS	METRIC UNITS
Total Weight:	20.0 oz per linear yard	619 grams per linear meter
	13.3 oz per square yard	451 grams per square meter
Backing:	Nonwoven	Nonwoven
Width:	52"- 54"	1.32m - 1.37m

All patterns stocked are in 30 linear yard bolts

DESIGN INFORMATION

VERTICAL REPEAT	MATCH
53.35 CM	REVERSE HANG/STRAIGHT

FEDERAL SPECIFICATIONS

Questex exceeds G.S.A Federal Specification CCC-W-408D for Type II materials using test procedures detailed in Federal Specifications CCC-T-191-B. This wallcovering passes The National Fire Protection Association NFPA286 Corner Burn Test.

FIRE HAZARD CLASSIFICATION RESULTS

- TESTED IN ACCORDANCE WITH ASTM E-84 TUNNEL TEST
- CLASS "A" FIRE RATED
- FLAME SPREAD 25
- SMOKE DEVELOPED 20
- EN13501 (B-s1,d0)

This product is intended for use in buildings that are properly designed and maintained to avoid moisture infiltration, condensation and/or accumulation at wall cavities and wall surfaces, particularly in warm, humid climates.

ANTI-MICROBIAL FEATURES

Vinyl wallcoverings contain bactericides and mildew inhibitors to discourage the growth of mold and mildew under normal conditions.

5 YEAR WARRANTY AGAINST MANUFACTURING DEFECTS

Use only adhesives and primers as recommended by the manufacturer.

COPYRIGHT

Copyright © 2019 Questex, All Rights Reserved.  
465 Devon Park Drive, Wayne, PA 19087 USA | [contract@wallquest.com](mailto:contract@wallquest.com)  
[www.wallquest.com/questex](http://www.wallquest.com/questex) - MADE IN U.S.A.







Glacier RH20210 Dove RH20207



Ecru RH20205 Fawn RH20217



Frost RH20218 Honey RH20216



Steel RH20208 Chestnut RH20206





52" - 54" Type II 20oz. Contract Wallcovering

PHYSICAL PROPERTIES

	U.S. UNITS	METRIC UNITS
Total Weight:	20.0 oz per linear yard	619 grams per linear meter
	13.3 oz per square yard	451 grams per square meter
Backing:	Nonwoven	Nonwoven
Width:	52" - 54"	1.32m - 1.37m

All patterns stocked are in 30 linear yard bolts

DESIGN INFORMATION

VERTICAL REPEAT	MATCH
RANDOM	RANDOM/REVERSE HANG

FEDERAL SPECIFICATIONS

Questex exceeds G.S.A Federal Specification CCC-W-408D for Type II materials using test procedures detailed in Federal Specifications CCC-T-191-B. This wallcovering passes The National Fire Protection Association NFPA286 Corner Burn Test.

FIRE HAZARD CLASSIFICATION RESULTS

- TESTED IN ACCORDANCE WITH ASTM E-84 TUNNEL TEST
- CLASS "A" FIRE RATED
- FLAME SPREAD 25
- SMOKE DEVELOPED 20
- EN13501 (B-s1,d0)

This product is intended for use in buildings that are properly designed and maintained to avoid moisture infiltration, condensation and/or accumulation at wall cavities and wall surfaces, particularly in warm, humid climates.

ANTI-MICROBIAL FEATURES

Vinyl wallcoverings contain bactericides and mildew inhibitors to discourage the growth of mold and mildew under normal conditions.

5 YEAR WARRANTY AGAINST MANUFACTURING DEFECTS

Use only adhesives and primers as recommended by the manufacturer.

COPYRIGHT

Copyright © 2019 Questex, All Rights Reserved.  
465 Devon Park Drive, Wayne, PA 19087 USA | contract@wallquest.com  
www.wallquest.com/questex - MADE IN U.S.A.

Inlay Linen

52" - 54" Type II 20oz. Contract Wallcovering





INLAY LINEN



Haze

RH25700



Glacier

RH25710



Ecru

RH25705



Stone

RH25718



Dove

RH25707



Dusty Blue

RH25708



Fawn

RH25717



Villa

RH25706

INLAY LINEN



Buff

RH25715



Shale

RH25728



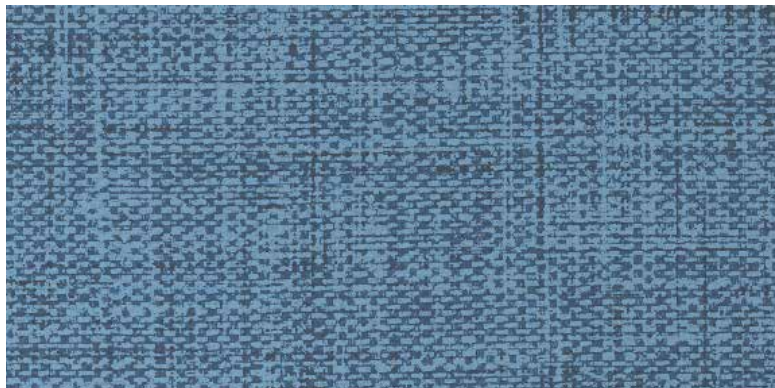
Tawny

RH25725



Sage

RH25704



Indigo

RH25702



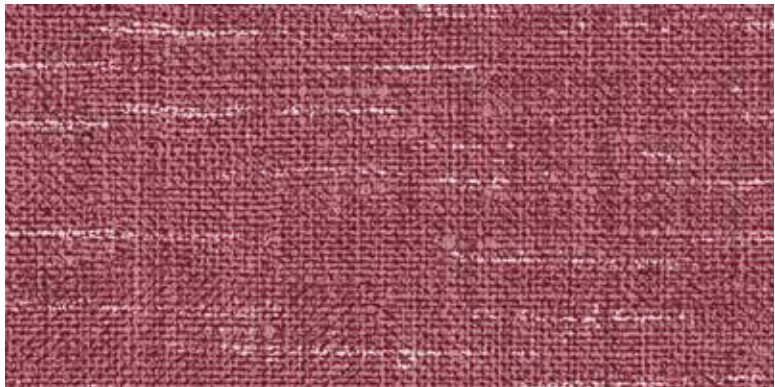
Heather Grey

RH25738



Jewel

RH25714



Ruby

RH25701





52" - 54" Type II 20oz. Contract Wallcovering

*PHYSICAL PROPERTIES*

	U.S. UNITS	METRIC UNITS
Total Weight:	20.0 oz per linear yard	619 grams per linear meter
	13.3 oz per square yard	451 grams per square meter
Backing:	Nonwoven	Nonwoven
Width:	52" - 54"	1.32m - 1.37m

All patterns stocked are in 30 linear yard bolts

*DESIGN INFORMATION*

VERTICAL REPEAT	MATCH
53.35 CM	REVERSE HANG/HALF DROP

*FEDERAL SPECIFICATIONS*

Questex exceeds G.S.A Federal Specification CCC-W-408D for Type II materials using test procedures detailed in Federal Specifications CCC-T-191-B. This wallcovering passes The National Fire Protection Association NFPA286 Corner Burn Test.

*FIRE HAZARD CLASSIFICATION RESULTS*

- TESTED IN ACCORDANCE WITH ASTM E-84 TUNNEL TEST
- CLASS "A" FIRE RATED
- FLAME SPREAD 25
- SMOKE DEVELOPED 20
- EN13501 (B-s1,d0)

This product is intended for use in buildings that are properly designed and maintained to avoid moisture infiltration, condensation and/or accumulation at wall cavities and wall surfaces, particularly in warm, humid climates.

*ANTI-MICROBIAL FEATURES*

Vinyl wallcoverings contain bactericides and mildew inhibitors to discourage the growth of mold and mildew under normal conditions.

*5 YEAR WARRANTY AGAINST MANUFACTURING DEFECTS*

Use only adhesives and primers as recommended by the manufacturer.

*COPYRIGHT*

Copyright © 2019 Questex, All Rights Reserved.  
465 Devon Park Drive, Wayne, PA 19087 USA | [contract@wallquest.com](mailto:contract@wallquest.com)  
[www.wallquest.com/questex](http://www.wallquest.com/questex) - MADE IN U.S.A.

52" - 54" Type II 20oz. Contract Wallcovering







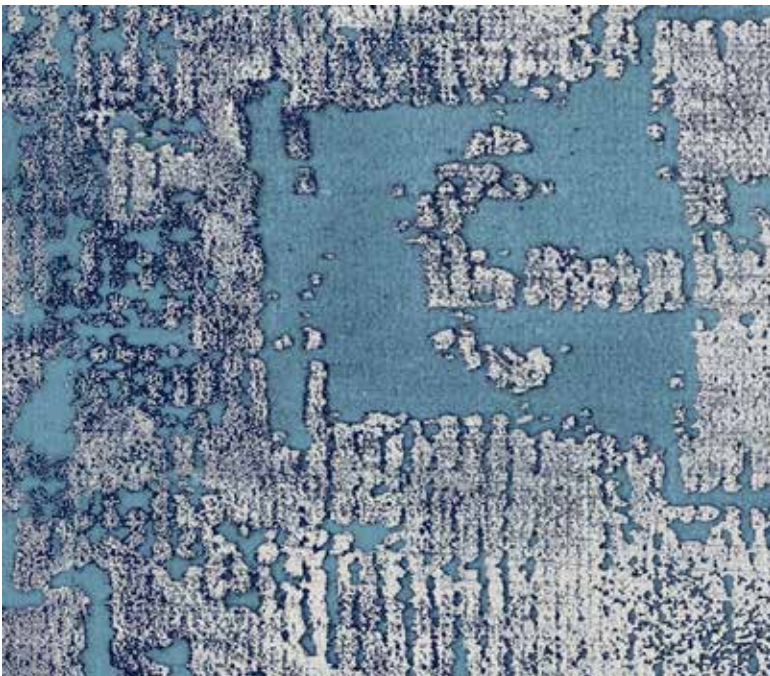
Ecu

RH21805



Alloy

RH21808



Indigo

RH21802



Jewel

RH21804



Oat

RH21803



Tawny

RH21815



Ruby

RH21801



Slate

RH21800



52" - 54" Type II 20oz. Contract Wallcovering

PHYSICAL PROPERTIES

	U.S. UNITS	METRIC UNITS
Total Weight:	20.0 oz per linear yard 13.3 oz per square yard	619 grams per linear meter 451 grams per square meter
Backing:	Nonwoven	Nonwoven
Width:	52" - 54"	1.32m - 1.37m

All patterns stocked are in 30 linear yard bolts

DESIGN INFORMATION

VERTICAL REPEAT	MATCH
RANDOM	RANDOM/REVERSE HANG

FEDERAL SPECIFICATIONS

Questex exceeds G.S.A Federal Specification CCC-W-408D for Type II materials using test procedures detailed in Federal Specifications CCC-T-191-B. This wallcovering passes The National Fire Protection Association NFPA286 Corner Burn Test.

FIRE HAZARD CLASSIFICATION RESULTS

- TESTED IN ACCORDANCE WITH ASTM E-84 TUNNEL TEST
- CLASS "A" FIRE RATED
- FLAME SPREAD 25
- SMOKE DEVELOPED 20
- EN13501 (B-s1,d0)

This product is intended for use in buildings that are properly designed and maintained to avoid moisture infiltration, condensation and/or accumulation at wall cavities and wall surfaces, particularly in warm, humid climates.

ANTI-MICROBIAL FEATURES

Vinyl wallcoverings contain bactericides and mildew inhibitors to discourage the growth of mold and mildew under normal conditions.

5 YEAR WARRANTY AGAINST MANUFACTURING DEFECTS

Use only adhesives and primers as recommended by the manufacturer.

COPYRIGHT

Copyright © 2019 Questex, All Rights Reserved.  
465 Devon Park Drive, Wayne, PA 19087 USA | [contract@wallquest.com](mailto:contract@wallquest.com)  
[www.wallquest.com/questex](http://www.wallquest.com/questex) - MADE IN U.S.A.



Navaho Weave

52" - 54" Type II 20oz. Contract Wallcovering





NAVAHO WEAVE



Ivory

RH22130



Silk

RH22115



Mineral

RH22120



Quartz

RH22106



Alloy

RH22108



Fossil

RH22110

NAVAHO WEAVE



Ecru

RH22105



Tawny

RH22125



Indigo

RH22102



Slate

RH22100



Ruby

RH22101



Jewel

RH22104





52" - 54" Type II 20oz. Contract Wallcovering

PHYSICAL PROPERTIES

	U.S. UNITS	METRIC UNITS
Total Weight:	20.0 oz per linear yard	619 grams per linear meter
	13.3 oz per square yard	451 grams per square meter
Backing:	Nonwoven	Nonwoven
Width:	52" - 54"	1.32m - 1.37m

All patterns stocked are in 30 linear yard bolts

DESIGN INFORMATION

VERTICAL REPEAT	MATCH
RANDOM	RANDOM/REVERSE HANG

FEDERAL SPECIFICATIONS

Questex exceeds G.S.A Federal Specification CCC-W-408D for Type II materials using test procedures detailed in Federal Specifications CCC-T-191-B. This wallcovering passes The National Fire Protection Association NFPA286 Corner Burn Test.

FIRE HAZARD CLASSIFICATION RESULTS

- TESTED IN ACCORDANCE WITH ASTM E-84 TUNNEL TEST
- CLASS "A" FIRE RATED
- FLAME SPREAD 25
- SMOKE DEVELOPED 20
- EN13501 (B-s1,d0)

This product is intended for use in buildings that are properly designed and maintained to avoid moisture infiltration, condensation and/or accumulation at wall cavities and wall surfaces, particularly in warm, humid climates.

ANTI-MICROBIAL FEATURES

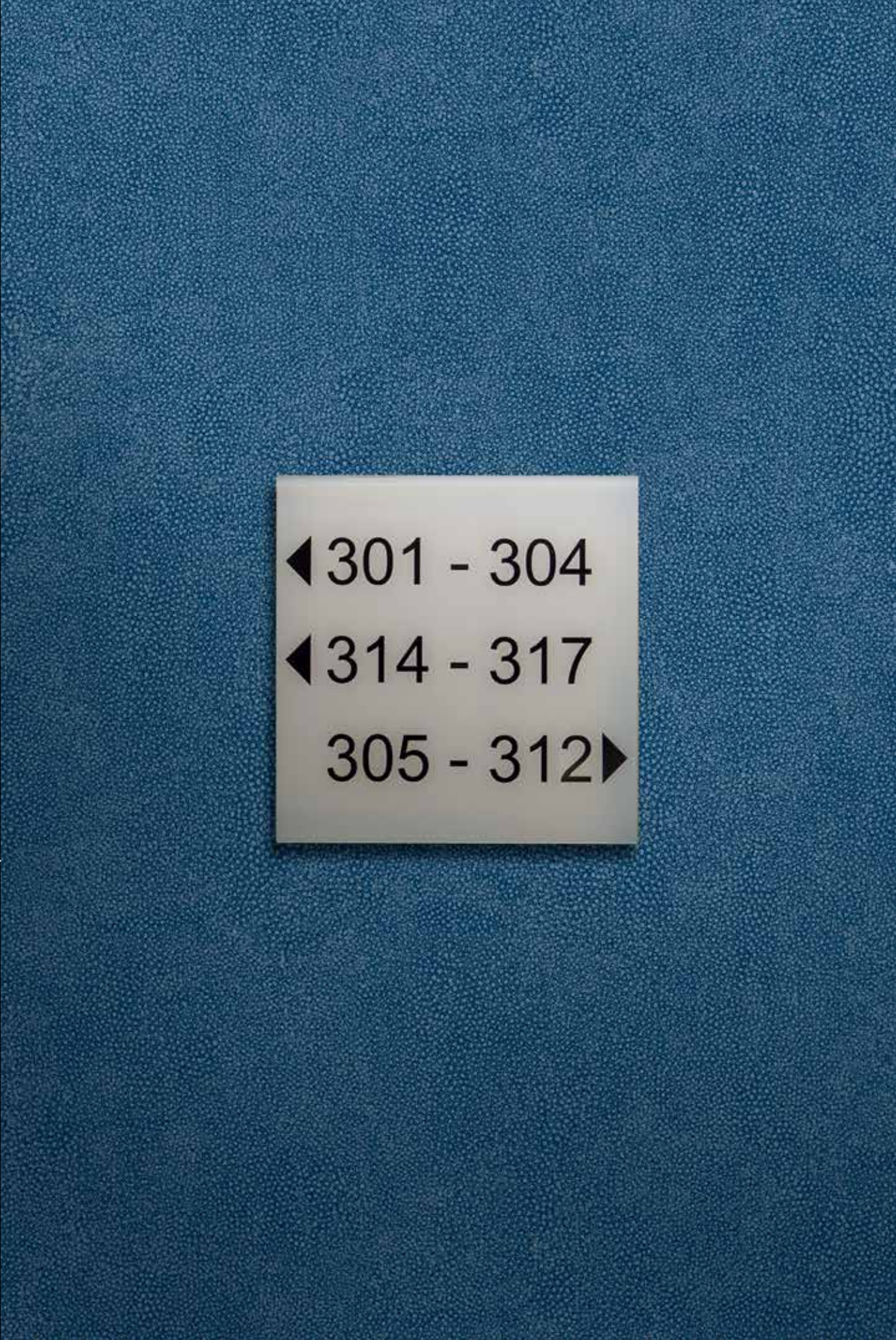
Vinyl wallcoverings contain bactericides and mildew inhibitors to discourage the growth of mold and mildew under normal conditions.

5 YEAR WARRANTY AGAINST MANUFACTURING DEFECTS

Use only adhesives and primers as recommended by the manufacturer.

COPYRIGHT

Copyright © 2019 Questex, All Rights Reserved.  
465 Devon Park Drive, Wayne, PA 19087 USA | contract@wallquest.com  
www.wallquest.com/questex - MADE IN U.S.A.



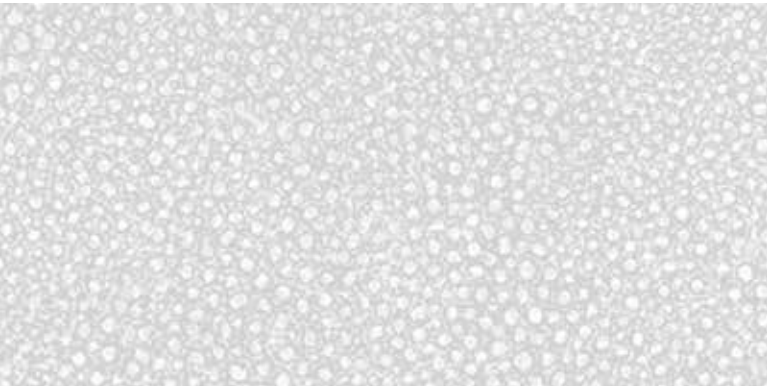


SHAGREEN



Luster

RH25920



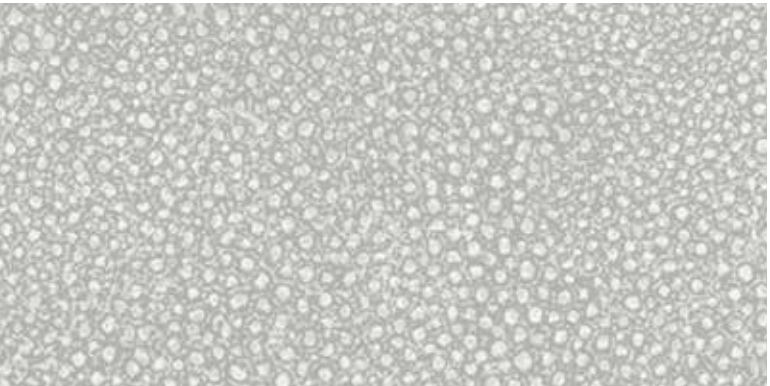
Platinum

RH25910



Magnolia

RH25903



Ash

RH25908



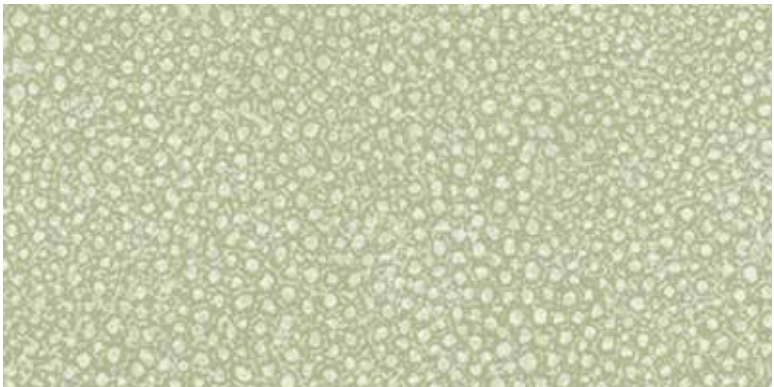
Soft Pink

RH25921



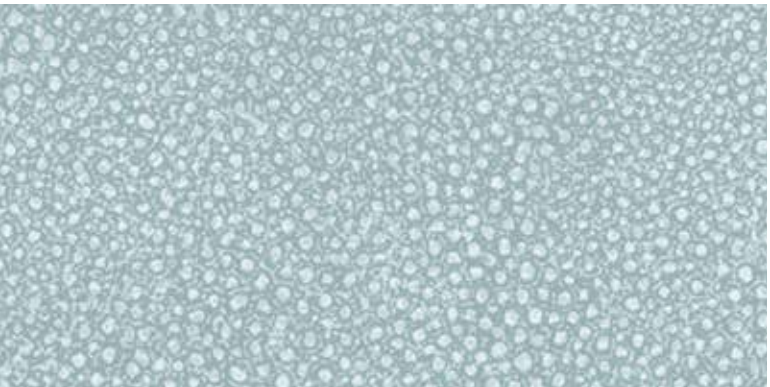
Flint

RH25901



Melon

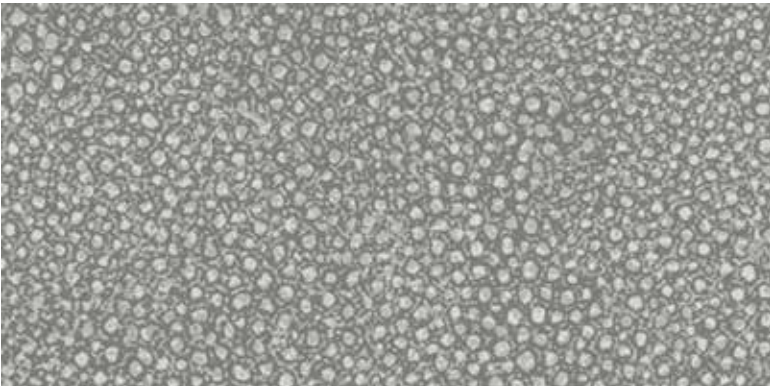
RH25924



Morning Mist

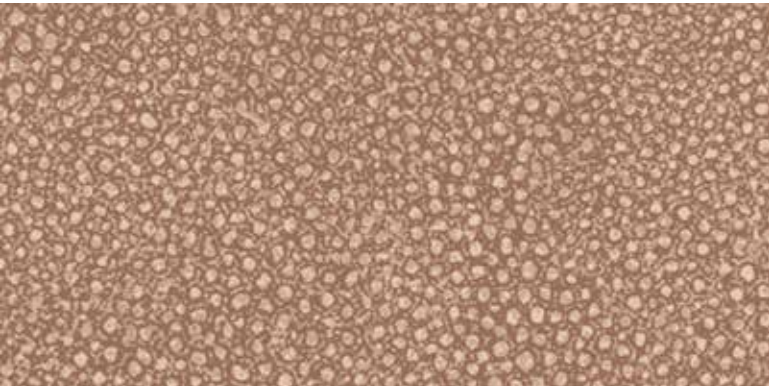
RH25912

SHAGREEN



Iron

RH25900



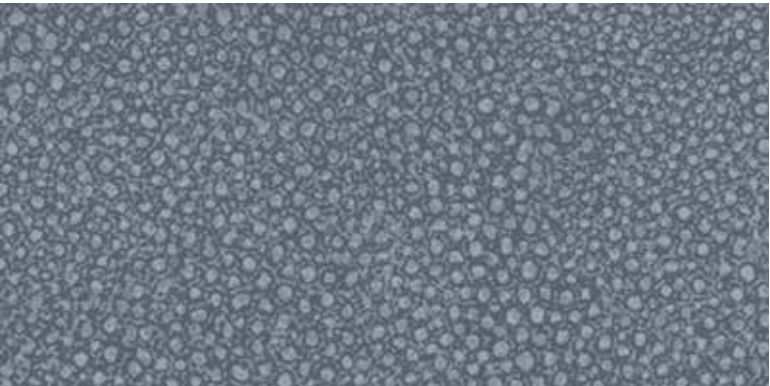
Copper

RH25931



Sand

RH25905



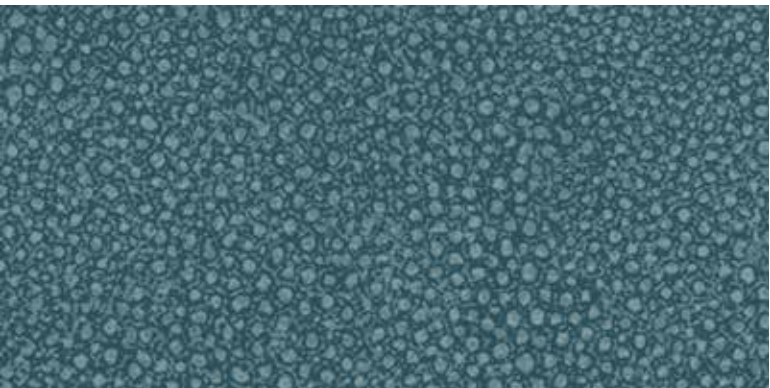
Stonewash

RH25909



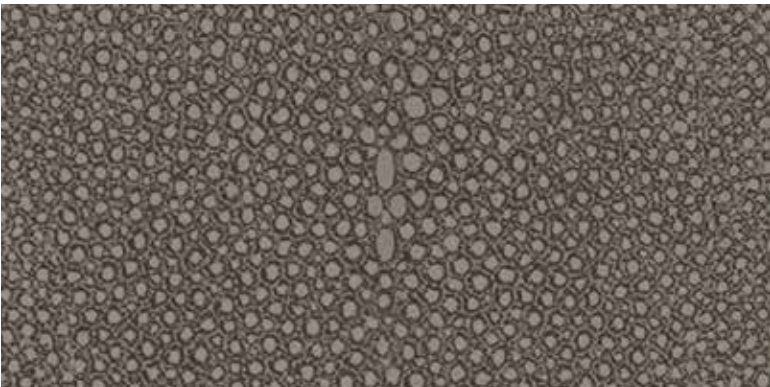
Azure

RH25902



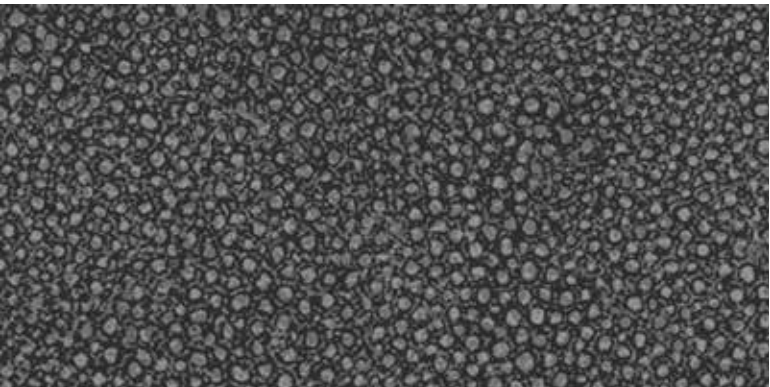
Spruce

RH25914



Carob

RH25904



Shadow

RH25930





52" - 54" Type II 20oz. Contract Wallcovering

**PHYSICAL PROPERTIES**

	U.S. UNITS	METRIC UNITS
Total Weight:	20.0 oz per linear yard	619 grams per linear meter
	13.3 oz per square yard	451 grams per square meter
Backing:	Nonwoven	Nonwoven
Width:	52" - 54"	1.32m - 1.37m

All patterns stocked are in 30 linear yard bolts

**DESIGN INFORMATION**

VERTICAL REPEAT	MATCH
53.35 CM	REVERSE HANG/STRAIGHT

**FEDERAL SPECIFICATIONS**

Questex exceeds G.S.A Federal Specification CCC-W-408D for Type II materials using test procedures detailed in Federal Specifications CCC-T-191-B. This wallcovering passes The National Fire Protection Association NFPA286 Corner Burn Test.

**FIRE HAZARD CLASSIFICATION RESULTS**

- TESTED IN ACCORDANCE WITH ASTM E-84 TUNNEL TEST
- CLASS "A" FIRE RATED
- FLAME SPREAD 25
- SMOKE DEVELOPED 20
- EN13501 (B-s1,d0)

This product is intended for use in buildings that are properly designed and maintained to avoid moisture infiltration, condensation and/or accumulation at wall cavities and wall surfaces, particularly in warm, humid climates.

**ANTI-MICROBIAL FEATURES**

Vinyl wallcoverings contain bactericides and mildew inhibitors to discourage the growth of mold and mildew under normal conditions.

**5 YEAR WARRANTY AGAINST MANUFACTURING DEFECTS**

Use only adhesives and primers as recommended by the manufacturer.

**COPYRIGHT**

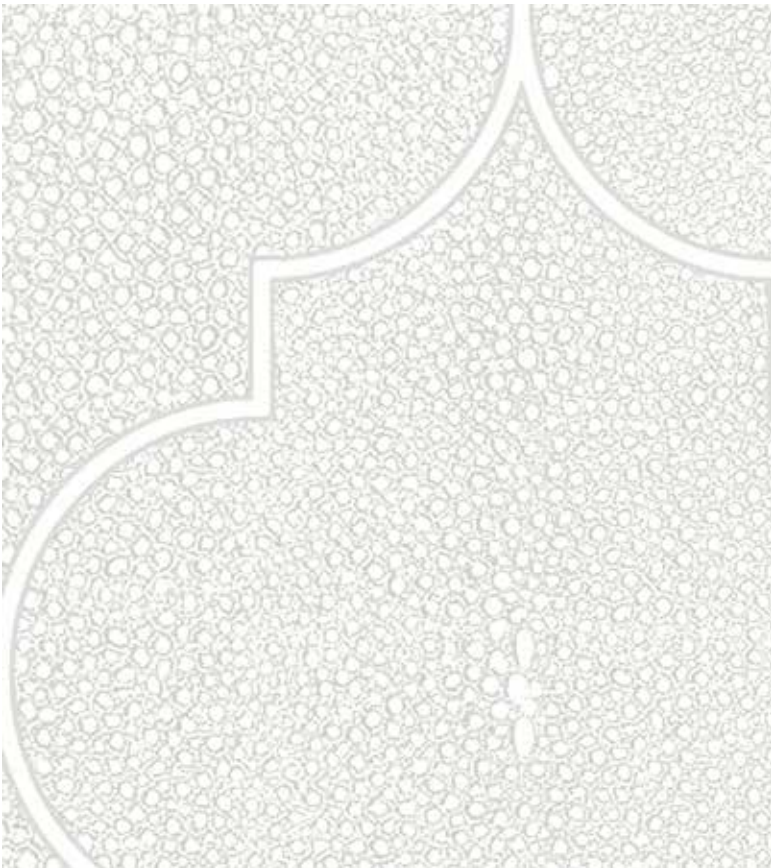
Copyright © 2019 Questex, All Rights Reserved.  
465 Devon Park Drive, Wayne, PA 19087 USA | contract@wallquest.com  
www.wallquest.com/questex - MADE IN U.S.A.

Shagreen Tile

52" - 54" Type II 20oz. Contract Wallcovering

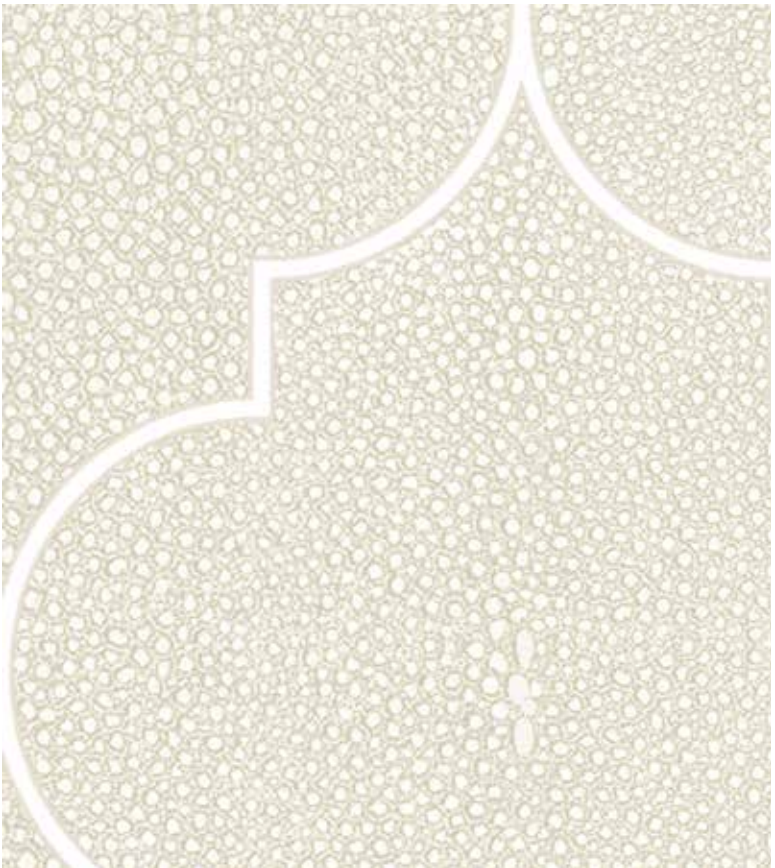






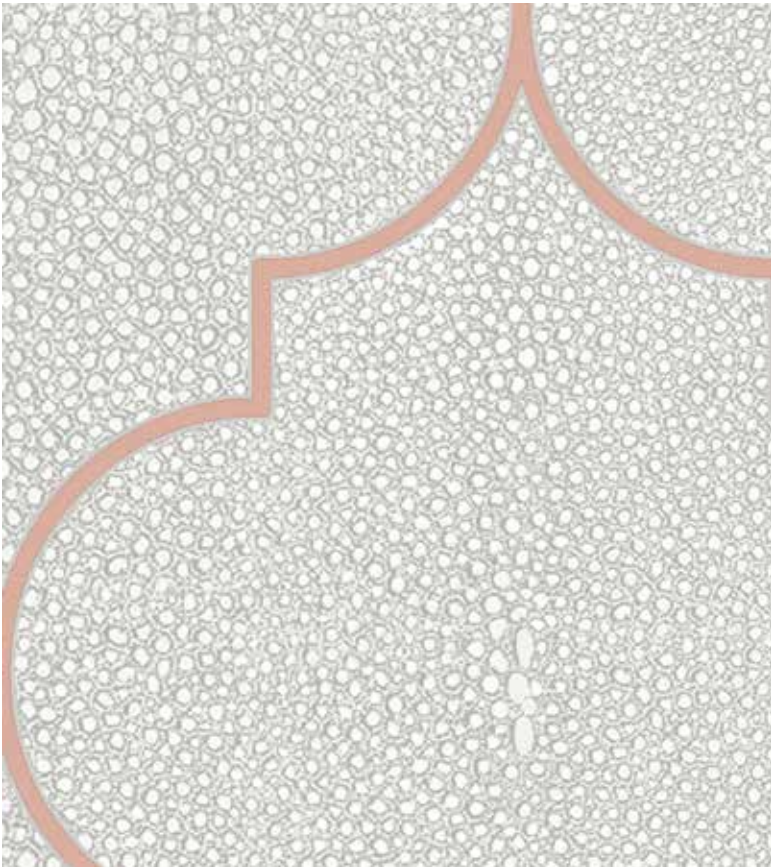
Platinum

RH25810



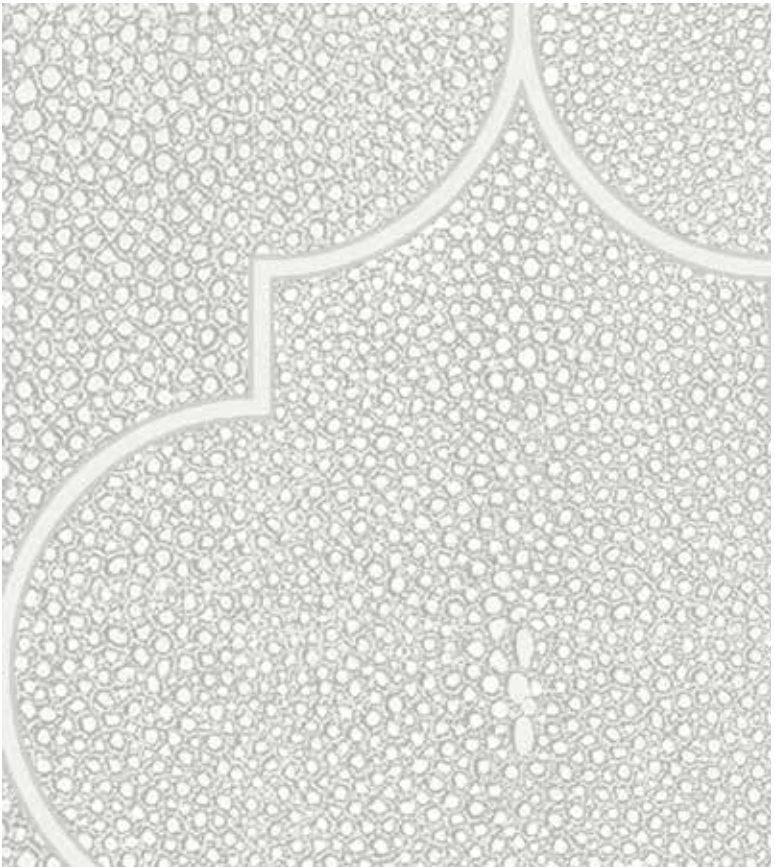
Magnolia

RH25803



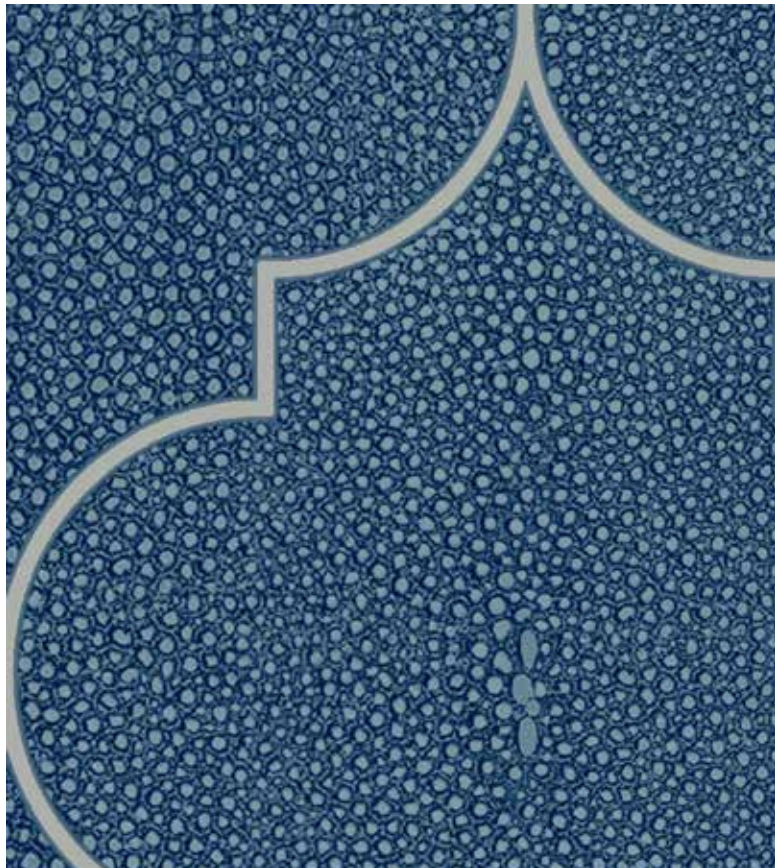
Flint

RH25801



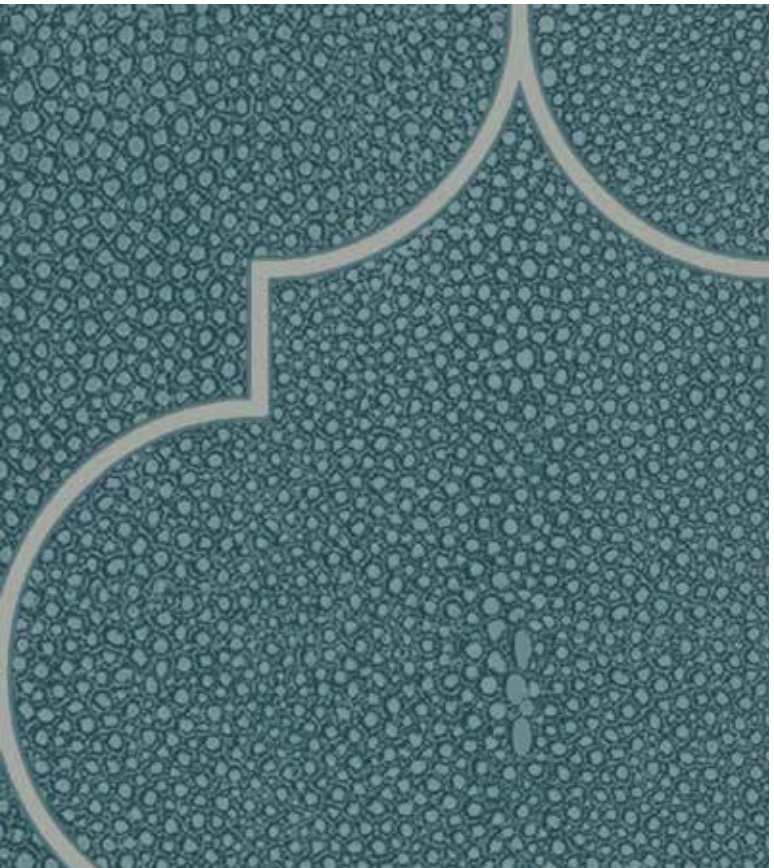
Ash

RH25808



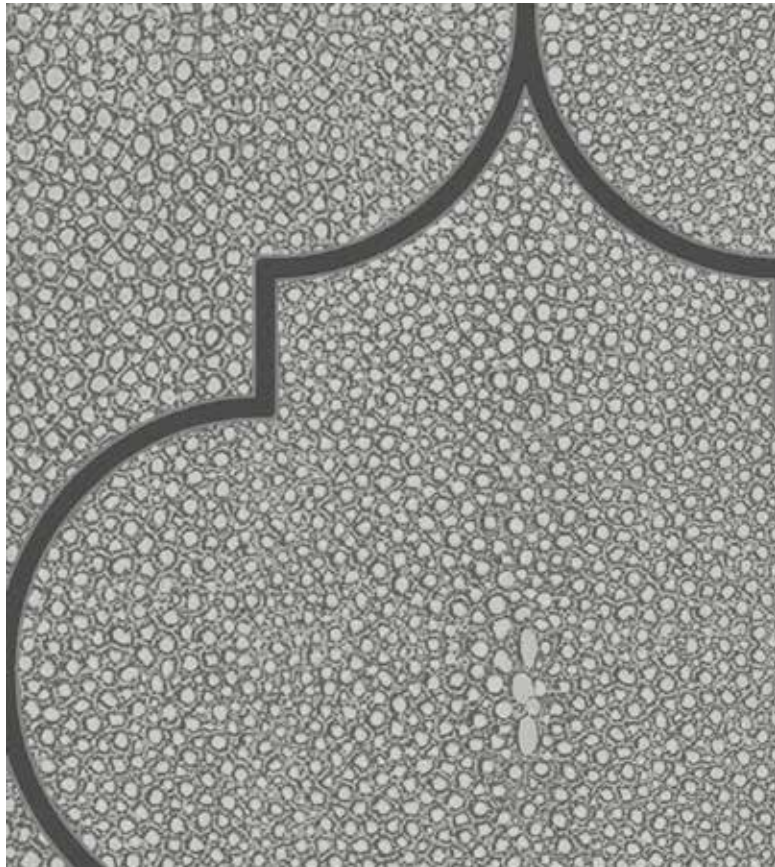
Azure

RH25802



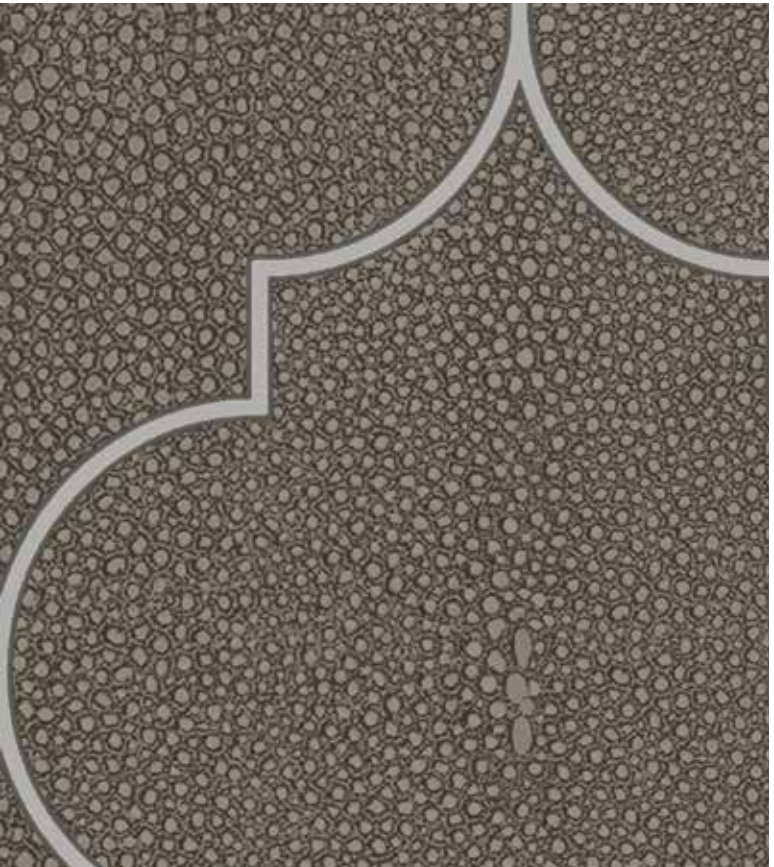
Spruce

RH25814



Iron

RH25800



Carob

RH25804