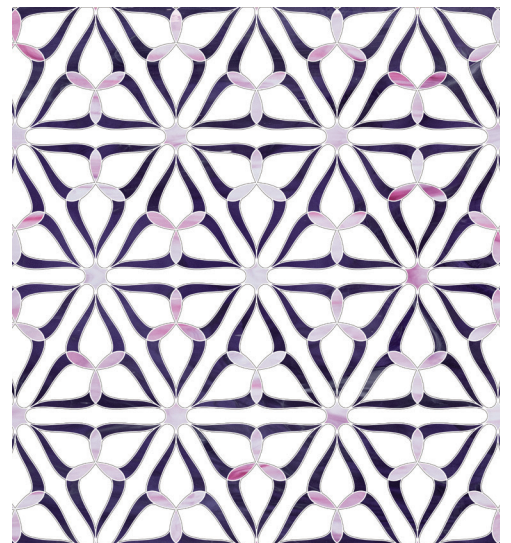
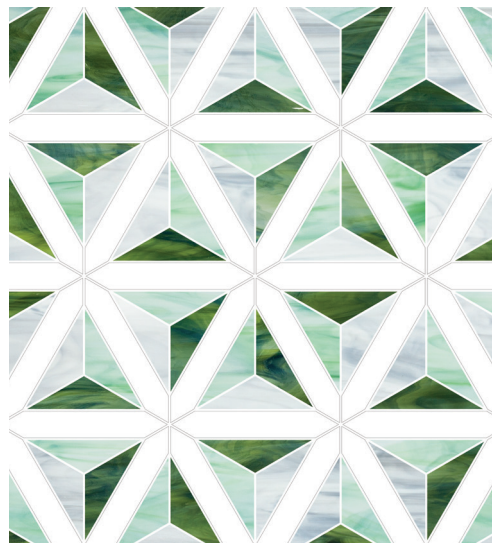
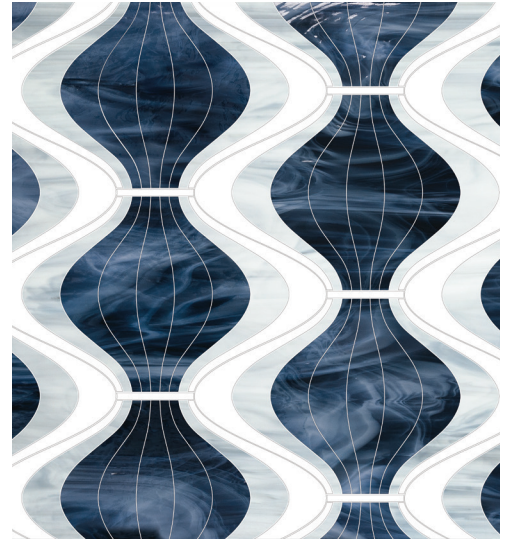
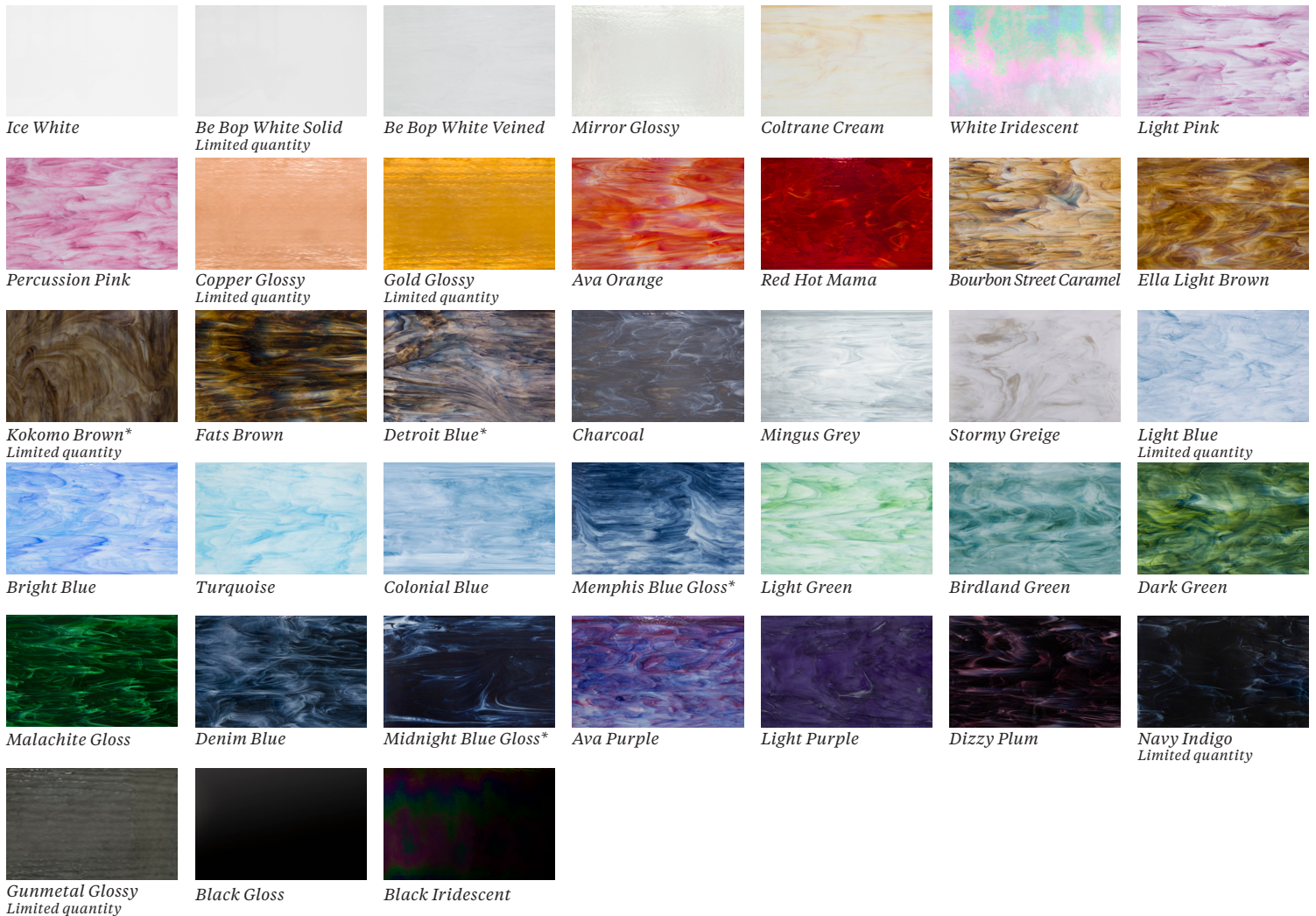


JAZZ CLUB

Jazz Club is our customization program specific to the Jazz Glass collection, offering slabs of stained glass in a dazzling assortment of colors. Jazz Club slabs can be hand-cut into specific field tile sizes, or in our Tailored To program to match your unique vision.



JAZZ CLUB



APPLICATIONS								VARIATION				TAILORED TO CUSTOMIZATION					
INTERIOR FLOOR	INTERIOR WALL	SHOWER WALL	SHOWER FLOOR	EXTERIOR FLOOR	EXTERIOR WALL	POOL/ FOUNTAIN	COUNTER TOP	V1	V2	V3	V4	CARPET CUTTING ⁴					
No	All ¹	Yes, including steam ²	No	No	Yes, including freeze thaw ²	Yes, including freeze thaw ³	Yes ²					FIELD	FINISH	MOSAIC	SADDLE	VANITY TOP	WATERJET

INSTALLATION/MAINTENANCE									
SETTING MATERIAL	GROUT	GROUT JOINT	MEMBRANE	CAULK	SEALER	CLEANER	INSTALLATION INSTRUCTIONS	LAYOUT	DRY LAYOUT
Mapei Adesilex P10/Keraply White ⁵	Mapei Ultracolor Plus Sanded	As established on sheets	Mapei Mapelastix AquaDefense	Mapei Keracaulk Sanded	Not Required	AquaMix Concentrated Stone & Tile Cleaner	A.T. Guidelines	No	Required

TAILORED TO GLASS

1/8" thick

*Easily reordered. not spectrum glass

NOTES

¹ All except metallic or mirrored glass - no wet applications.

² Stained glass only - no metallic or mirrored in wet applications.

³ Some patterns may not be suitable. Stained glass only - no metallic or mirrored in wet applications.

⁴ Carpet cutting option for our Tailored To Waterjet patterns only. No field or mosaics.

⁵ Patterns that contain all (or mostly) metallic or mirrored use Mapei Planicrete W.

Tech Note: 1/8" thick glass options for waterjet production can not be combined with thicker materials, including stone.

Design Note: Jazz Club field tile and mosaics vary slightly in size and may exhibit uneven or slightly chipped edges. Please consider these handmade factors when determining grout joints.

All colors have variation. Bourbon St Caramel & Detroit Blue colors have extreme variation from light to dark.