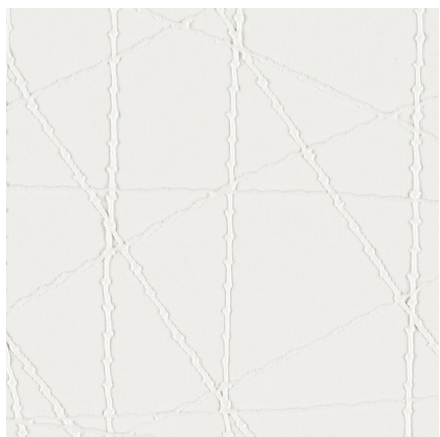




## PALLAS



**STUDIO WHITE**  
27.319.011

**APPLICATION**  
Upholstery

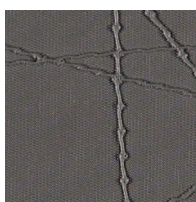
**ABRASION**  
100,000 Double Rubs

**CONTENT/SUSTAINABILITY**  
100% Poly Vinyl Chloride

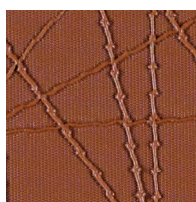
**WIDTH**  
59 inches



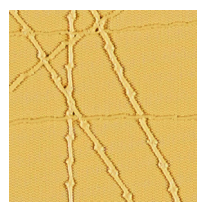
**LINEN**  
27.319.021



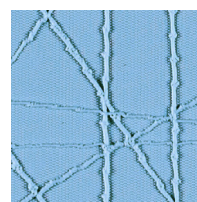
**EMBER**  
27.319.062



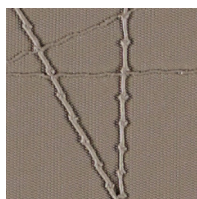
**TERRA COTTA**  
27.319.169



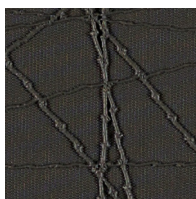
**TURMERIC**  
27.319.135



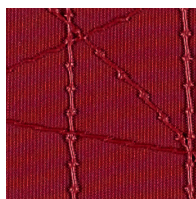
**SKY**  
27.319.104



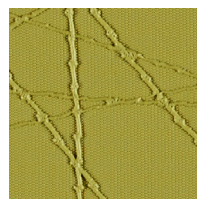
**HARVEST**  
27.319.031



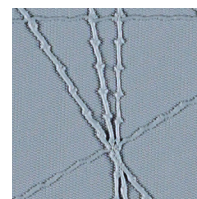
**CARBON**  
27.319.072



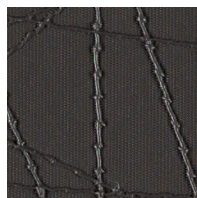
**MADDER**  
27.319.158



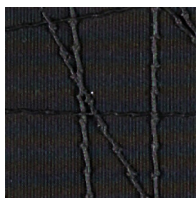
**SPRING**  
27.319.125



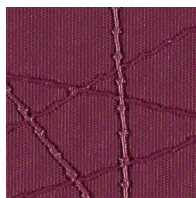
**TINT**  
27.319.052



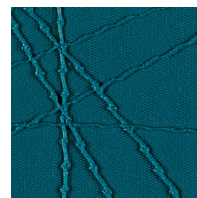
**HENNA**  
27.319.041



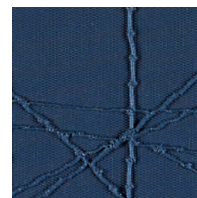
**SHADOW**  
27.319.081



**BURGUNDY**  
27.319.147



**IKAT**  
27.319.113



**DENIM**  
27.319.094

---

# CROSS HATCH






BACKSTITCH™ COLLECTION

---

## SPECIFICATION INFORMATION

### PATTERN

### CROSS HATCH - BACKSTITCH™ COLLECTION

Application	Upholstery
Content	100% Poly Vinyl Chloride
Repeat	14-5/8" Vertical, 17-7/8" Horizontal
Width	59"
Weight	38.9 oz. / Linear Yard
Finish/Backing	None / Cotton
Cleaning Code*	WS
Warranty	Standard (3yr)
Performance¹	    
Flammability	NFPA 260, TB 117-2013
Abrasion	100,000 Double Rubs (Wyzenbeek)

Colors may vary slightly between dye lots. This card may show discontinued colorways. For current color availability, please refer to [pallastextiles.com](http://pallastextiles.com) or call 1-800-472-5527. \*For specific cleaning instructions, visit [pallastextiles.com/cleaning](http://pallastextiles.com/cleaning)

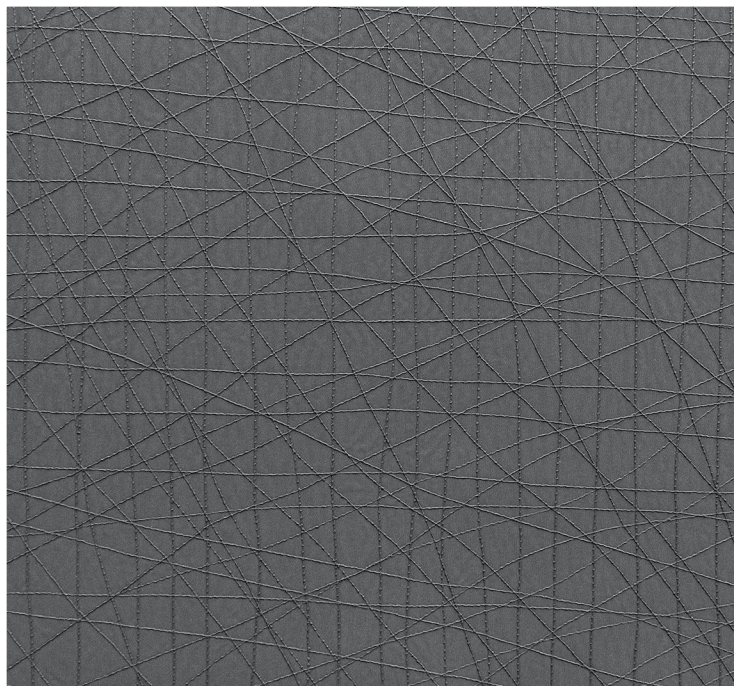


Photo for overall pattern effect only.



**PALLAS**



Printed on FSC® certified paper, using only vegetable-based inks, including metallics. Please recycle.

Pallas Textiles • 1330 Bellevue Street • P. O. Box 8100 • Green Bay, WI 54308-8100 • 1-800-472-5527 • [www.pallastextiles.com](http://www.pallastextiles.com)  
Pallas is a registered trademark of Krueger International, Inc.® 2020 KI All Rights Reserved. Litho in USA. PT-FF-000326  
¹ACT® Registered Certification Marks