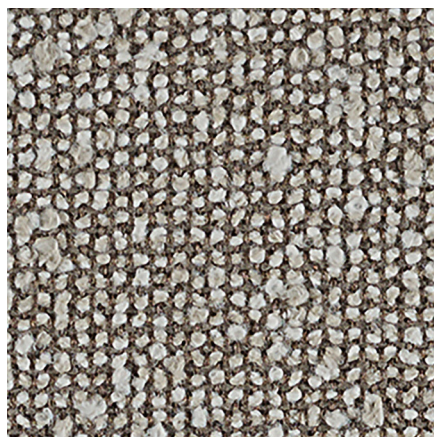




# PALLAS



**MIRAGE**  
29.099.011



**CAMOUFLAGE**  
29.099.021

**APPLICATION**  
Upholstery

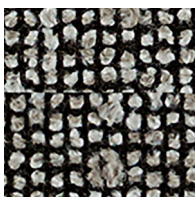
**CONTENT/SUSTAINABILITY**  
51% Post-Consumer  
Recycled Polyester,  
49% Polyester

**WIDTH**  
54 inches

**PERFORMANCE**  
Crypton®  
Bleach Cleanable

**ABRASION**  
100,000 Double Rubs

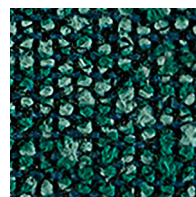
**MADE IN AMERICA**



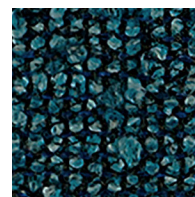
**HAZE**  
29.099.042



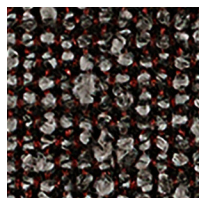
**EMBER**  
29.099.109



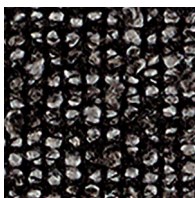
**RAINFOREST**  
29.099.086



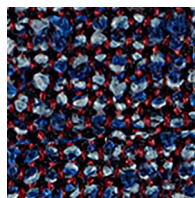
**BLUE LAGOON**  
29.099.073



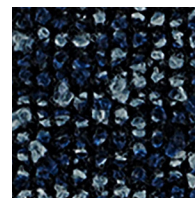
**FLEECE**  
29.099.031



**DEEP SPACE**  
29.099.052



**VINTAGE WINE**  
29.099.097



**STARRY NIGHT**  
29.099.064

---

## ESSENCE

Structure™ Collection

---

## SPECIFICATION INFORMATION

### PATTERN

### ESSENCE - STRUCTURE™ COLLECTION

Application	Upholstery
Content	51% Post-Consumer Recycled Polyester, 49% Polyester
Repeat	None
Width	54"
Weight	16 oz. / Linear Yard
Finish/Backing	Crypton <sup>®</sup>
Cleaning Code*	W, Bleach Cleanable
Warranty	Standard (3yr)
Performance <sup>1</sup>	    
Flammability	NFPA 260, TB 117-2013
Abrasion	100,000 Double Rubs (Wyzenbeek)

Colors may vary slightly between dye lots. This card may show discontinued colorways.  
For current color availability, please refer to [pallastextiles.com](http://pallastextiles.com) or call 1-800-472-5527.  
\*For specific cleaning instructions, visit [pallastextiles.com/cleaning](http://pallastextiles.com/cleaning)

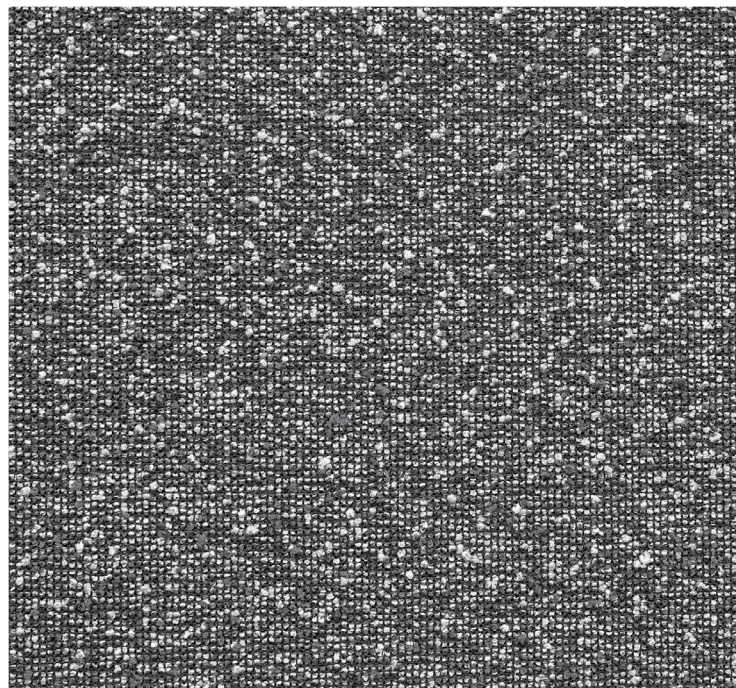


Photo for overall pattern effect only.



**PALLAS**



Printed on FSC® certified paper,  
using only vegetable-based inks,  
including metallics. Please recycle.

Pallas Textiles • 1330 Bellevue Street • P. O. Box 8100 • Green Bay, WI 54308-81008 • 1-800-472-5527 • [www.pallastextiles.com](http://www.pallastextiles.com)  
Pallas is a registered trademark of Krueger International, Inc.® 2020 KI All Rights Reserved. Litho in USA. PT-FF-000345  
<sup>1</sup>ACT® Registered Certification Marks