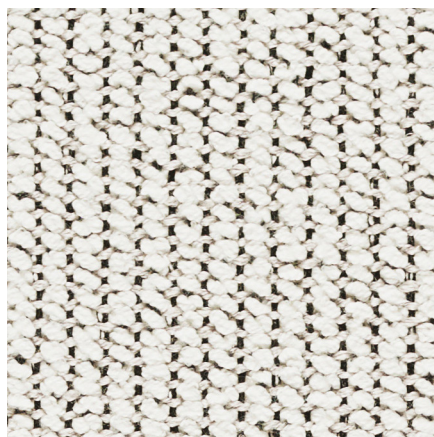




# PALLAS



**ICE**  
29.103.031

**APPLICATION**  
Upholstery

**CONTENT/SUSTAINABILITY**  
60% UV Polyester,  
40% Polyester

**WIDTH**  
54 inches

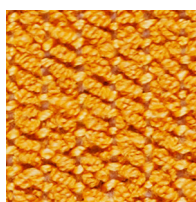
**PERFORMANCE**  
Crypton®  
Bleach Cleanable

**ABRASION**  
102,000 Double Rubs

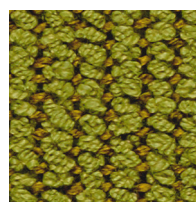
**MADE IN AMERICA**



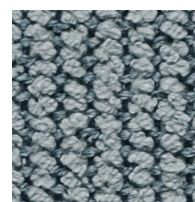
**SHIITAKE**  
29.103.011



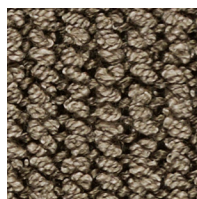
**GOLDFINCH**  
29.103.149



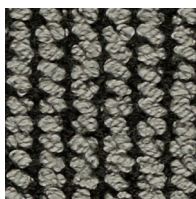
**GECKO**  
29.103.105



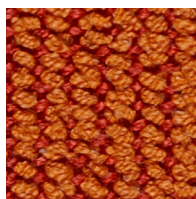
**CAY**  
29.103.084



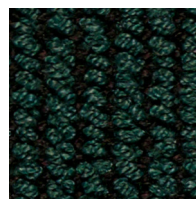
**MINK**  
29.103.021



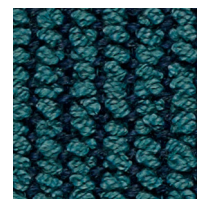
**TIN**  
29.103.042



**INVIGORATE**  
29.103.139



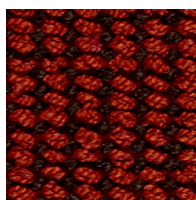
**REAL TEAL**  
29.103.096



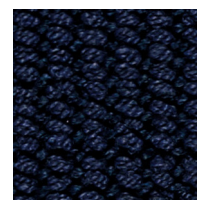
**BOSPORUS**  
29.103.074



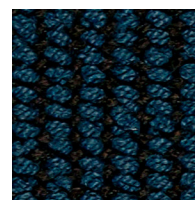
**PEPPERCORN**  
29.103.052



**TANAGER**  
29.103.128



**COMMODORE**  
29.103.117



**MIDNIGHT BLUE**  
29.103.064






---

## MESH

Structure™ Collection

---

SPECIFICATION INFORMATION

PATTERN	MESH - STRUCTURE™ COLLECTION
Application	Upholstery
Content	60% UV Polyester, 40% Polyester
Repeat	1/16" Vertical, 1/8" Horizontal
Width	54"
Weight	32.59 oz. / Linear Yard
Finish/Backing	Crypton®
Cleaning Code*	W, Bleach Cleanable
Warranty	Standard (3yr)
Performance¹	    
Flammability	NFPA 260, TB 117-2013
Abrasion	102,000 Double Rubs (Wyzenbeek)

Colors may vary slightly between dye lots. This card may show discontinued colorways.  
For current color availability, please refer to [pallastextiles.com](http://pallastextiles.com) or call 1-800-472-5527.  
\*For specific cleaning instructions, visit [pallastextiles.com/cleaning](http://pallastextiles.com/cleaning)  
\*\*Multiple factors affect fabric durability and appearance retention, including end-user application and proper maintenance. Wyzenbeek results above 100,000 double rubs have not been shown to be a reliable indicator of increased fabric lifespan.

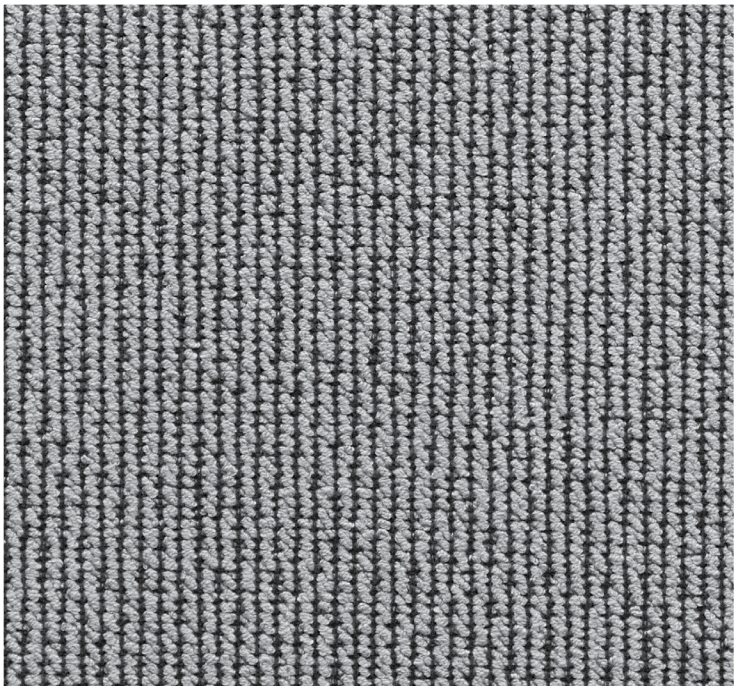
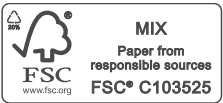


Photo for overall pattern effect only.



PALLAS



Printed on FSC® certified paper,  
using only vegetable-based inks,  
including metallics. Please recycle.