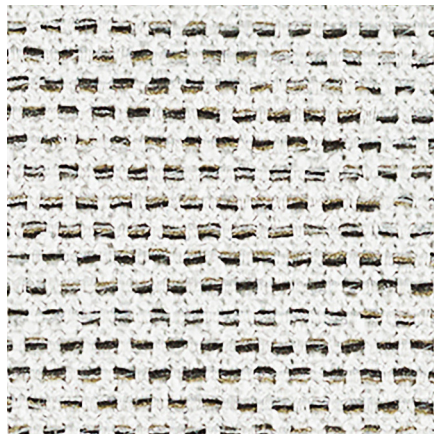




# PALLAS



**FROST**  
29.102.011

**APPLICATION**  
Upholstery

**CONTENT/SUSTAINABILITY**  
41% Post-Consumer  
Recycled Polyester,  
33% Polyester,  
25% Post-Industrial  
Recycled Polyester,  
1% Nylon

**WIDTH**  
55 inches

**PERFORMANCE**  
Crypton®  
Bleach Cleanable

**ABRASION**  
84,000 Double Rubs

**MADE IN AMERICA**



**ASPHALT**  
29.102.032



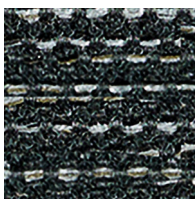
**HARVEST MOON**  
29.102.139



**SPLASH**  
29.102.084



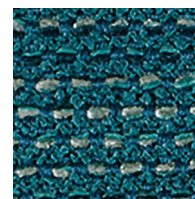
**SPARROW**  
29.102.021



**SMOKE**  
29.102.042



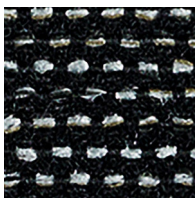
**TOMATO**  
29.102.128



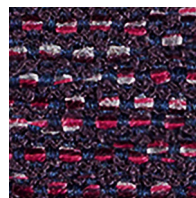
**AZURE**  
29.102.096



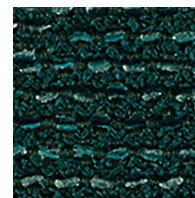
**OCEAN BLUE**  
29.102.074



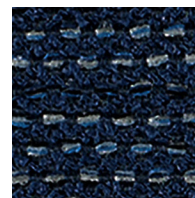
**INK**  
29.102.051



**BLACKBERRY**  
29.102.117



**JUNIPER**  
29.102.106



**COBALT**  
29.102.064

## STITCH

Structure™ Collection

## SPECIFICATION INFORMATION

### PATTERN

### STITCH - STRUCTURE™ COLLECTION

Application	Upholstery
Content	41% Post-Consumer Recycled Polyester, 33% Polyester, 25% Post-Industrial Recycled Polyester, 1% Nylon
Repeat	1/4" Vertical, 3/16" Horizontal
Width	55"
Weight	32.88 oz. / Linear Yard
Finish/Backing	Crypton®
Cleaning Code*	W, Bleach Cleanable
Warranty	Standard (3yr)
Performance¹	    
Flammability	NFPA 260, TB 117-2013
Abrasion	84,000 Double Rubs (Wyzenbeek)

Colors may vary slightly between dye lots. This card may show discontinued colorways. For current color availability, please refer to [pallastextiles.com](http://pallastextiles.com) or call 1-800-472-5527. \*For specific cleaning instructions, visit [pallastextiles.com/cleaning](http://pallastextiles.com/cleaning)

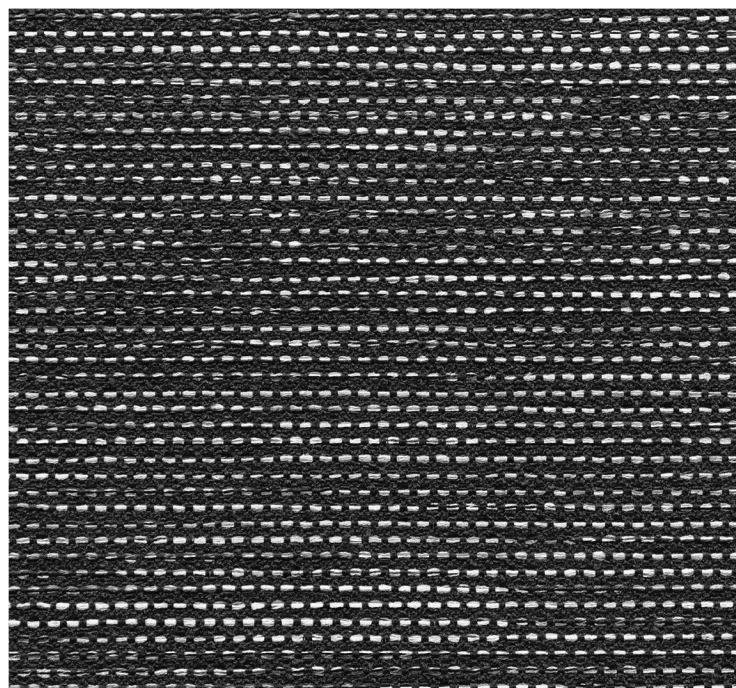


Photo for overall pattern effect only.



**PALLAS**



Printed on FSC® certified paper, using only vegetable-based inks, including metallics. Please recycle.

Pallas Textiles • 1330 Bellevue Street • P. O. Box 8100 • Green Bay, WI 54308-8100 • 1-800-472-5527 • [www.pallastextiles.com](http://www.pallastextiles.com)  
Pallas is a registered trademark of Krueger International, Inc.® 2020 KI All Rights Reserved. Litho in USA. PT-FF-000347  
¹ACT® Registered Certification Marks