

MUTO SLAB

acoustic panel solutions

 SOELBERG

MUTO SLAB

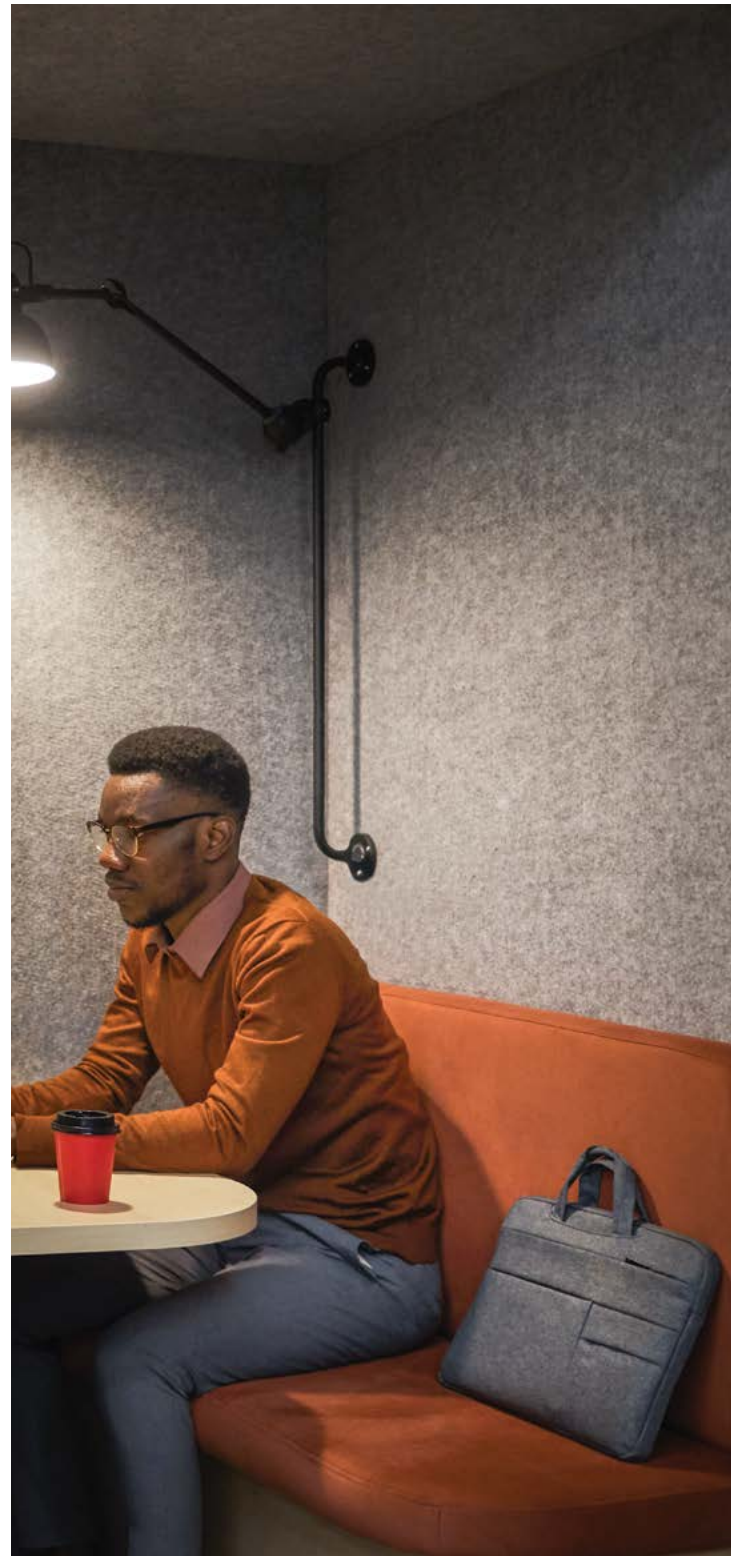
acoustic panel solutions

MUTO Slab panels provide soft sound absorbing surfaces. From full wall-to-wall panel installation to cut and modified for statement making shapes and designs, MUTO Slab is your product solution for quiet and productive spaces. With a variety of colorways to choose from along with two core thicknesses, designing quietly is easy.

Make It Cool. Make It Quiet.

SPECIFICATION

CONTENT	100% POLYESTER (PET) FELT
CORE THICKNESS	1/2" (12MM) AND 1" (24MM) FELT
COLORWAYS	19 COLORWAYS (1/2" CORE) 6 COLORWAYS (1" CORE)
PANEL SIZE	48" x 110"
WEIGHT	1/2 LB SQUARE FOOT (1/2" CORE) 3/4 LB SQUARE FOOT (1" CORE)
ACOUSTICS	0.40 - 0.75 NRC (1/2" CORE) 0.65 - 0.85 (1" CORE)
FIRE RATING	CLASS A ASTM - E84
ENVIRONMENTAL	DELCARE, MINDFUL MATERIALS & GREENGUARD GOLD CERTIFIED. MUTO IS PRODUCED FROM 100% RECYCLABLE PET FELT WITH A MINIMUM OF 60% PRE-CONSUMER RECYCLED CONTENT.
COLORFASTNESS	IN ACCORDANCE WITH ATCC 16.3 OPTION 3 THE COLOR CHANGE TO LIGHT AT 20 AFU WAS 4.5.
FINISH	MATTE
APPLICATION	INDOOR USE ONLY
LEAD TIME	2 - 3 WEEKS
WARRANTY	2 YEARS



MAINTENANCE

Vacuum to remove dirt and dust. Remove spills or spots immediately using a clean damp cloth. Carpet and fabric cleaners can also be used to clean. (Always test an inconspicuous area first.) Compressed air may be used to dust in difficult or hard-to-reach areas.

To disinfect, bleach can be used in accordance with CDC Cleaning & Disinfection instructions. The solution ratio is 5 tablespoons of bleach to 1 gallon of water | 4 teaspoons of bleach to 1 quart of water. Apply solution by spray and wipe off immediately. (Always test in an inconspicuous area first.)

1/2" (12MM) COLORWAYS

MATTE COLOR

19 STANDARD COLORS

CUSTOM PRINT COLORS AVAILABLE

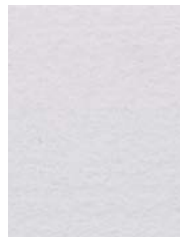
(CONTACT YOUR LOCAL SALES REP)

100% RECYCLABLE PET FELT



TOLERANCES

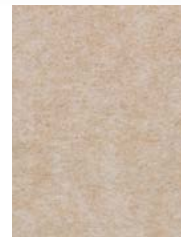
PET felt is made from 100% recyclable polyester plastic. Slight and consistent variations in color, density, texture are inherent to this core material and should be expected. Color, density and texture will vary by dye lot. MUTO is made with a 'felting' process which results in a textural heathered effect where the fibers consist of multiple tones and shades.



WHITE



BONE



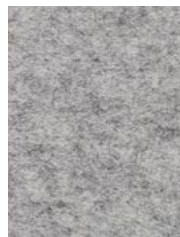
OATMEAL



CAMEL



CASHMERE



FOG



LAMB'S EAR



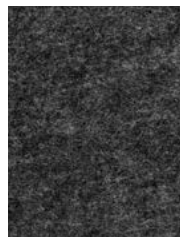
PEWTER



NORDIC KNIT



WINTER WATER



GRAPHITE



BLACK



MIDNIGHT



SPLASH



STORM



lichen



SUNSHINE



CLEMENTINE



CHILI PEPPER

1" (24MM) COLORWAYS

MATTE COLOR

19 STANDARD COLORS

CUSTOM PRINT COLORS AVAILABLE

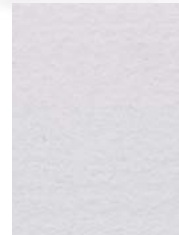
(CONTACT YOUR LOCAL SALES REP)

100% RECYCLABLE PET FELT

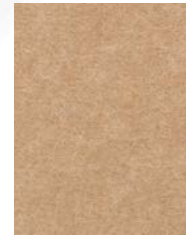


TOLERANCES

PET felt is made from 100% recyclable polyester plastic. Slight and consistent variations in color, density, texture are inherent to this core material and should be expected. Color, density and texture will vary by dye lot. MUTO is made with a 'felling' process which results in a textural heathered effect where the fibers consist of multiple tones and shades.



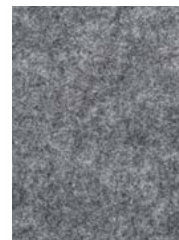
WHITE



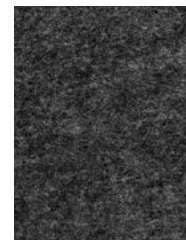
CAMEL



CASHMERE



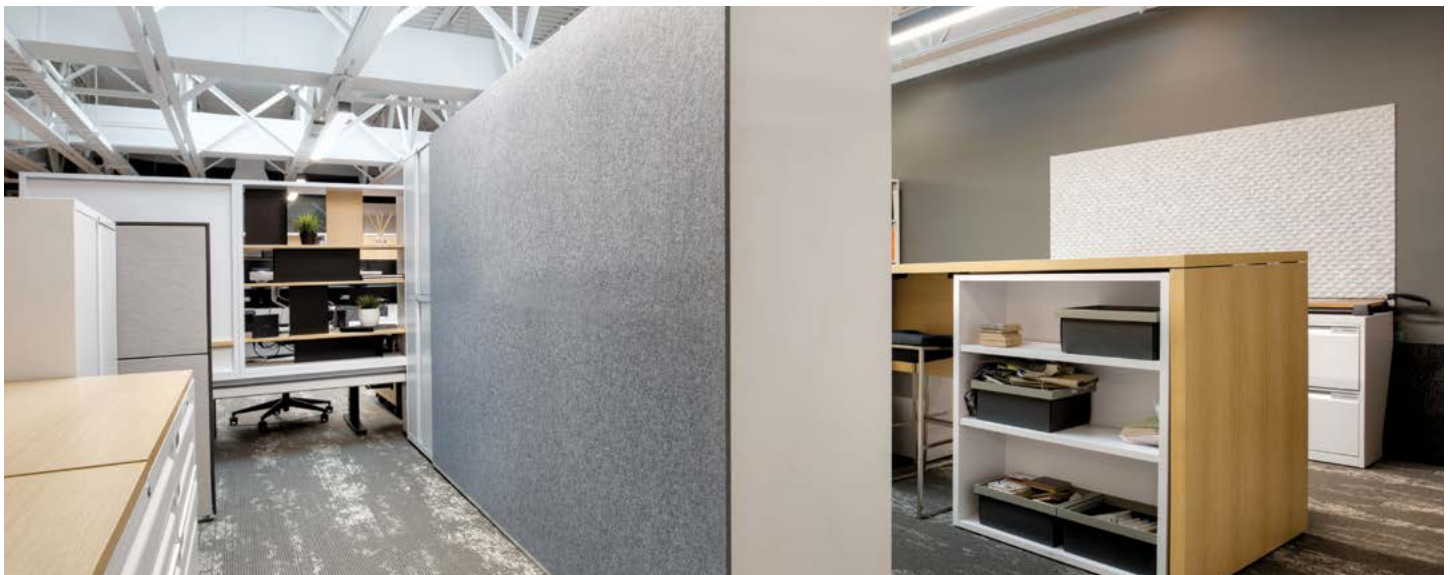
NORDIC KNIT



GRAPHITE



LICHEN



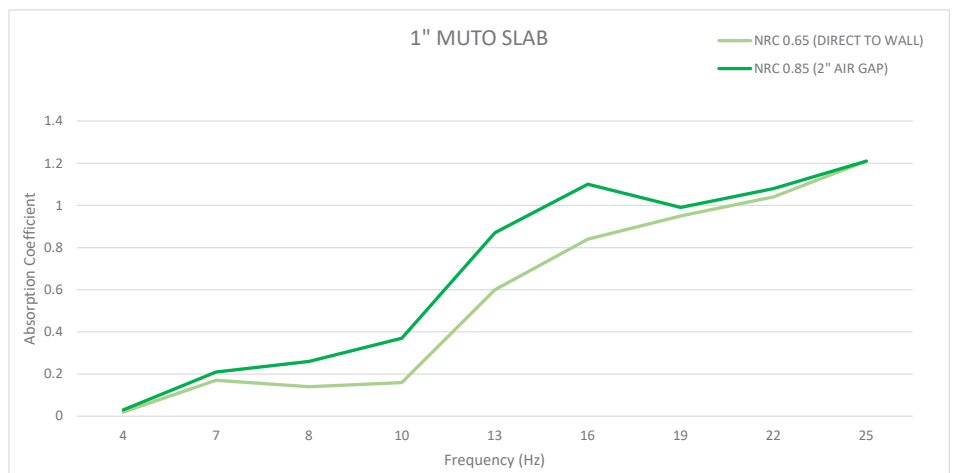
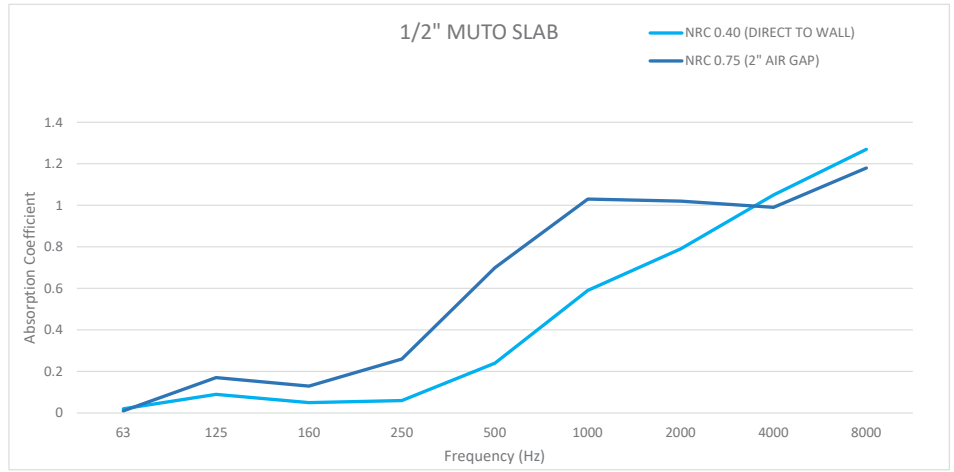
ACOUSTICS

NRC TEST DATA

NRC values are typically used for flat surfaces of a given surface area, e.g. carpet or wall coverings. When testing hanging objects that are spread out, the 'Apparent NRC' is used.

Higher NRC ratings mean higher sound absorbency. The performance of both 1/2" and 1" MUTO Slab increases as the depth of air gap increases.

NRC values will vary based on customization and specific installation details. Contact your sales representative to learn more.



ENVIRONMENTAL

DECLARE, MINDFUL MATERIALS & GREENGUARD GOLD CERTIFIED

We care about the environment and it matters that our materials support healthy and productive interior spaces. We use innovative materials but ensure that they meet the highest level of standards and expectations.

MUTO PET felt core material is 100% recyclable with no added urea formaldehyde.



MUTO
Soelberg Industries

Final Assembly: Orem, Utah, USA
Life Expectancy: Life of Structure Year(s)
End of Life Options: Salvageable/Reusable in its Entirety, Recyclable (100%)

Ingredients:
MUTO: Polyester Fiber, Baffle Hardware: Steel

Living Building Challenge Criteria: Compliant

I-13 Red List:
 LBC Red List Free % Disclosed: 100% at 100ppm
 LBC Red List Approved VOC Content: Not Applicable
 Declared

I-10 Interior Performance: CDPH Standard Method v1.2-2017
I-14 Responsible Sourcing: Not Applicable

SOE-0001
EXP: 01 OCT 2022
Original Issue Date: 2020

INTERNATIONAL LIVING FUTURE INSTITUTE™ living-future.org/declare

INSTALLATION

ADHESIVE

Use standard construction adhesives (Liquid Nails | Titebond) and apply to the back of the panel maintaining at least a 1" border around the perimeter. Adhere to substrate providing bracing to hold material in place per adhesive curing time instructions.

ZCLIP HARDWARE

Attach clips to the back of each panel with screw length to accommodate for the thickness of specified pattern. Anchor to substrate as required.

STAND OFF HARDWARE

Using barrell and cap, secure panel and anchor to substrate as required. Six anchor points recommended for full sized panel.

