


# MUTO TEXTURE

acoustic panel solutions

---

 SOELBERG

# MUTO TEXTURE

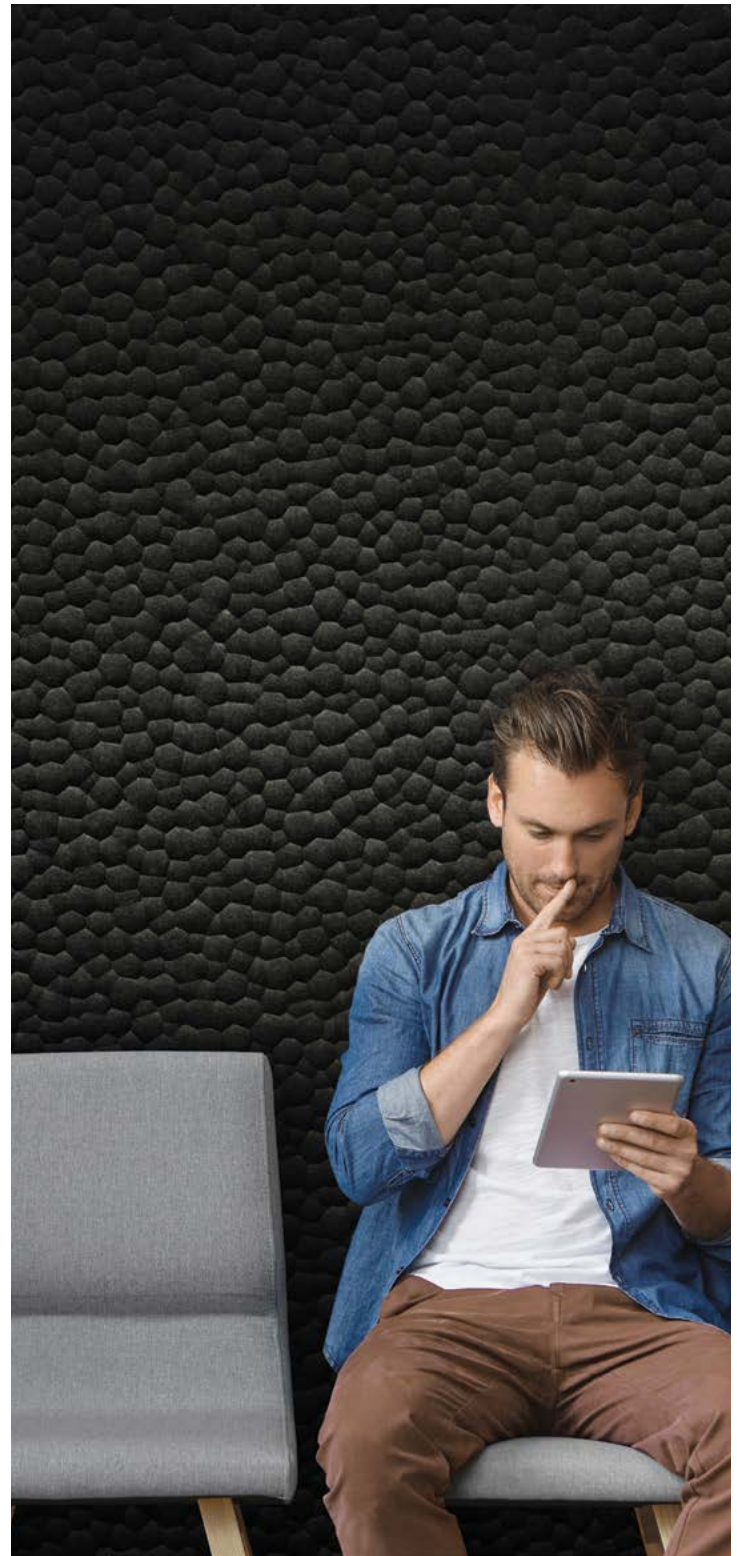
## acoustic panel solutions

MUTO Texture provides depth, drama, dimension and diffusion of sound. Whether used for walls, ceilings, dividers or artwork, the texture you have come to know and love from Soelberg is available in acoustic PET felt core. With a variety of colorways to choose from, MUTO gives you high-impact design in a thoughtfully functional way.

Make It Cool. Make It Quiet.

## SPECIFICATION

<b>CONTENT</b>	100% POLYESTER (PET) FELT	
<b>CORE THICKNESS</b>	1/2" (12MM) AND 1" (24MM) FELT	
<b>PATTERNS</b>		
1/2" CORE	ACUTO BOMBA CUCIRE MENZA TRONCO	BOLLA CORSA FRAMMENTO TRAGGO UOVO
1" CORE	COLMO PIENO ROMPO	LAVO RESPIRO VENA
<b>COLORWAYS</b>	19 COLORWAYS (1/2" CORE) 6 COLORWAYS (1" CORE)	
<b>PANEL SIZE</b>	42" x 96" AND 42" x 108"	
<b>WEIGHT</b>	1/2 LB   SQUARE FOOT (1/2" CORE) 3/4 LB   SQUARE FOOT (1" CORE)	
<b>ACOUSTICS</b>	1/2"   NRC 0.35 1"   NRC 0.65	
<b>FIRE RATING</b>	CLASS A   ASTM - E84	
<b>ENVIRONMENTAL</b>	DELICARE, MINDFUL MATERIALS & GREENGUARD GOLD CERTIFIED. MUTO IS PRODUCED FROM 100% RECYCLABLE PET FELT WITH A MINIMUM OF 60% PRE-CONSUMER RECYCLED CONTENT.	
<b>LEAD TIME</b>	2 - 3 WEEKS	
<b>WARRANTY</b>	2 YEARS	



## MAINTENANCE

Vacuum to remove dirt and dust. Remove spills or spots immediately using a clean damp cloth. Carpet and fabric cleaners can also be used to clean. (Always test an inconspicuous area first.) Compressed air may be used to dust in difficult or hard-to-reach areas.

To disinfect, bleach can be used in accordance with CDC Cleaning & Disinfection instructions. The solution ratio is 5 tablespoons of bleach to 1 gallon of water | 4 teaspoons of bleach to 1 quart of water. Apply solution by spray and wipe off immediately. (Always test in an inconspicuous area first.)



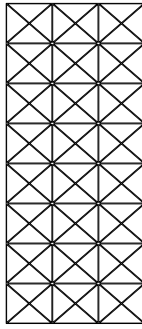
# MUTO TEXTURE

acoustic panel solutions

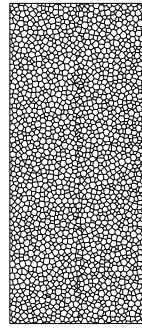
## 1/2" (12MM) PATTERNS

### 10 PATTERNS

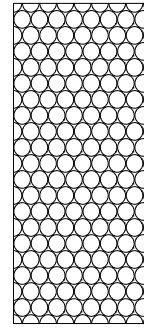
ACUTO	BOLLA	CORSA
CUCIRE	FRAMMENTO	MENSA
TRAGGO	UOVO	TRONCO



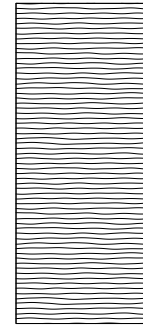
ACUTO



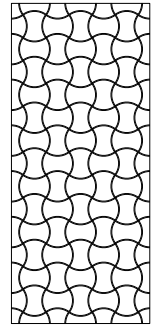
BOLLA



BOMBA



CORSA\*

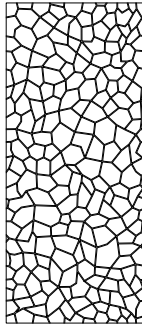


CUCIRE

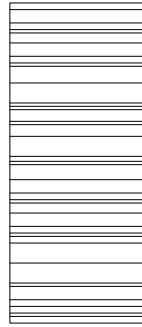
## 1/2" (12MM) COLORWAYS

### 19 COLORS

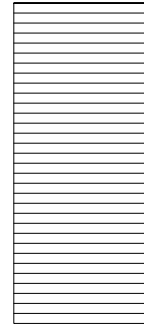
WHITE	BONE	OATMEAL
CAMEL	CASHMERE	FOG
LAMB'S EAR	PEWTER	NORDIC KNIT
WINTER WATER	GRAPHITE	BLACK
MIDNIGHT	SPLASH	STORM
LICHEN	SUNSHINE	CLEMENTINE
CHILI PEPPER		



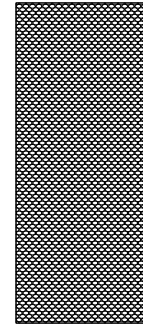
FRAMMENTO



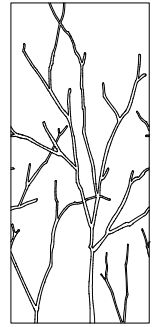
MENSA



TRAGGO\*



UOVO\*



TRONCO\*

\* Available with horizontal or vertical pattern orientation.

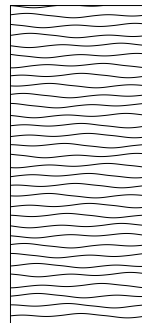
## 1" (24MM) PATTERNS

### 6 PATTERNS

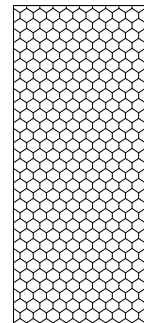
COLMO	LAVO	PIENO
CUCIRE	FRAMMENTO	MENSA
TRAGGO	UOVO	TRONCO



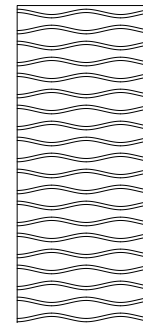
COLMO



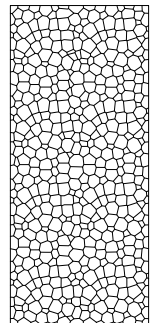
LAVO



PIENO



RESPIRO

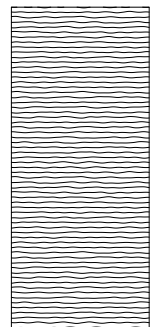


ROMPO

## 1" (24MM) COLORWAYS

### 6 COLORS

WHITE	CAMEL	CASHMERE
NORDIC KNIT	GRAPHITE	LICHEN



VENA\*

\* Available with horizontal or vertical pattern orientation.

# 1/2" (12MM) PATTERNS

## 10 PATTERNS TO CHOOSE FROM

42" x 96" PANELS

(PATTERN REPEATS HORIZONTALLY & VERTICALLY)

42" x 108" PANELS

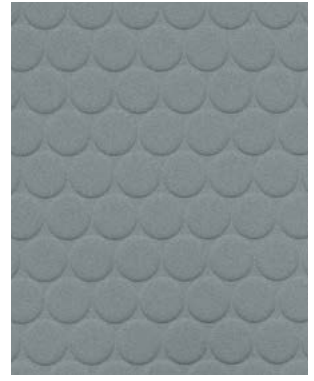
(PATTERN REPEATS HORIZONTALLY ONLY FOR  
CONTINUOUS VERTICAL PATTERN, ORDER  
42" x 96")



ACUTO



BOLLA



BOMBA



CORSA



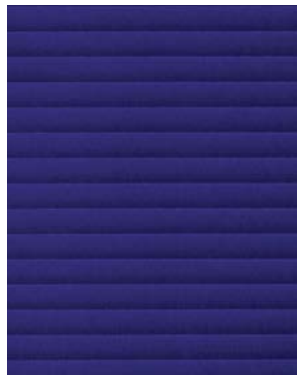
CUCIRE



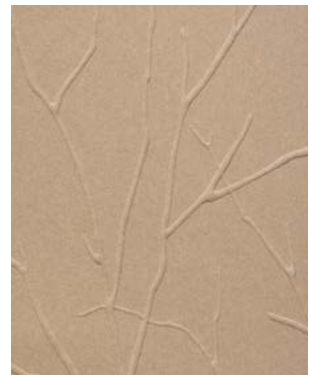
FRAMMENTO



MENSA



TRAGGO



TRONCO



UOVO

# 1/2" (12MM) COLORWAYS

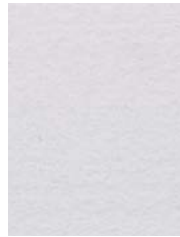
## MATTE COLOR

19 STANDARD COLORS  
CUSTOM PRINT COLORS AVAILABLE  
(CONTACT YOUR LOCAL SALES REP)  
100% RECYCLABLE PET FELT



## TOLERANCES

PET felt is made from 100% recyclable polyester plastic. Slight and consistent variations in color, density, texture are inherent to this core material and should be expected. Color, density and texture will vary by dye lot. MUTO is made with a 'felting' process which results in a textural heathered effect where the fibers consist of multiple tones and shades.



WHITE



BONE



OATMEAL



CAMEL



CASHMERE



FOG



LAMB'S EAR



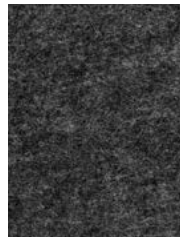
PEWTER



NORDIC KNIT



WINTER WATER



GRAPHITE



BLACK



MIDNIGHT



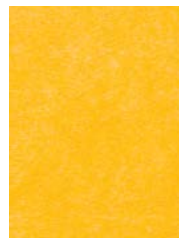
SPLASH



STORM



lichen



SUNSHINE



CLEMENTINE



CHILI PEPPER



# 1" (24MM) PATTERNS

## 6 PATTERNS TO CHOOSE FROM

42" x 96" PANELS

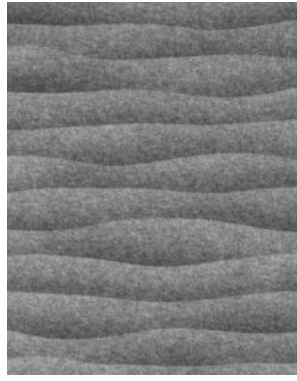
(PATTERN REPEATS HORIZONTALLY & VERTICALLY)

42" x 108" PANELS

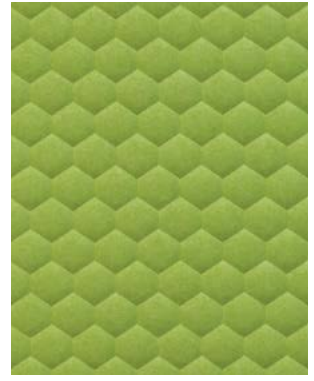
(PATTERN REPEATS HORIZONTALLY ONLY FOR CONTINUOUS VERTICAL PATTERN, ORDER 42" x 96")



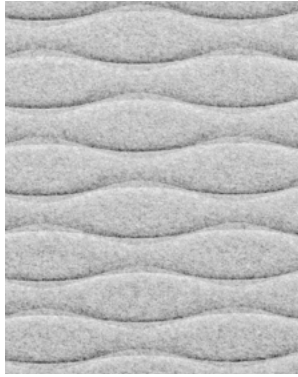
COLMO



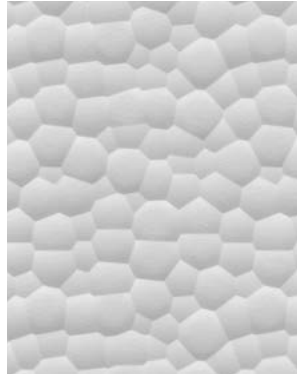
LAVO



PIENO



RESPIRO



ROMPO



VENA

# 1" (24MM) COLORWAYS

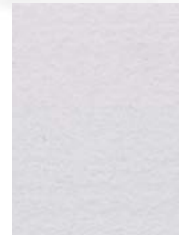
## MATTE COLOR

19 STANDARD COLORS  
CUSTOM PRINT COLORS AVAILABLE  
(CONTACT YOUR LOCAL SALES REP)  
100% RECYCLABLE PET FELT



## TOLERANCES

PET felt is made from 100% recyclable polyester plastic. Slight and consistent variations in color, density, texture are inherent to this core material and should be expected. Color, density and texture will vary by dye lot. MUTO is made with a 'felting' process which results in a textural heathered effect where the fibers consist of multiple tones and shades.



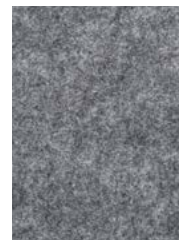
WHITE



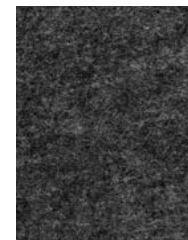
CAMEL



CASHMERE



NORDIC KNIT



GRAPHITE



LICHEN

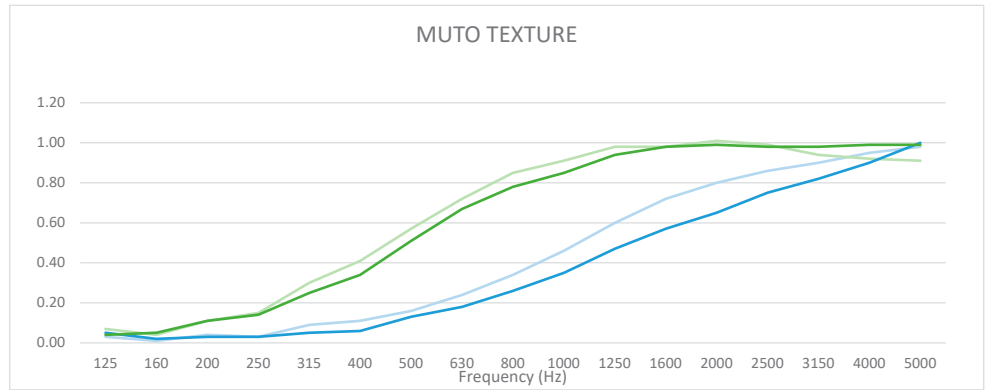


# ACOUSTICS

## NRC TEST DATA

Higher NRC ratings mean higher sound absorbency. The performance of MUTO Texture increases with an air gap between panel and wall.\*

NRC values will vary based on customization and specific installation details. Contact your sales representative to learn more.



PRODUCT	MOUNTING	SAMPLE FREQUENCY (Hz)				NRC
		250	500	1000	2000	
1/2" TRAGGO	DIRECT	0.03	0.13	0.35	0.65	0.30
	Z-CLIP	0.03	0.16	0.46	0.80	0.35
1" TRAGGO	DIRECT	0.14	0.51	0.85	0.99	0.60
	Z-CLIP	0.15	0.57	0.91	1.01	0.65

# ENVIRONMENTAL

## DECLARE, MINDFUL MATERIALS & GREENGUARD GOLD CERTIFIED

We care about the environment and it matters that our materials support healthy and productive interior spaces. We use innovative materials but ensure that they meet the highest level of standards and expectations.

MUTO PET felt core material is 100% recyclable with no added urea formaldehyde.





# INSTALLATION

## ADHESIVE

Use standard construction adhesives (Liquid Nails | Titebond) and apply to the back of the panel maintaining at least a 1" border around the perimeter. Adhere to substrate providing bracing to hold material in place per adhesive curing time instructions.

## ZCLIP HARDWARE

Attach clips to the back of each panel with screw length to accommodate for the thickness of specified pattern. Anchor to substrate as required.

## STAND OFF HARDWARE

Using barrell and cap, secure panel and anchor to substrate as required. Six anchor points recommended for full sized panel.

