

KEILHAUER

camira
A Keilhauer Alliance Partner

Blazer



Silverdale CUZ28



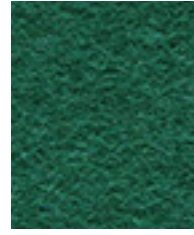
Dartmouth CUZ2Q



Goldsmith CUZ39



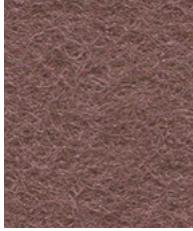
Latymer CUZ33



Montcrest CUZ3A



Surrey CUZ1E



Scottsdale CUZ3E



Handcross CUZ63



Vassar CUZ2U



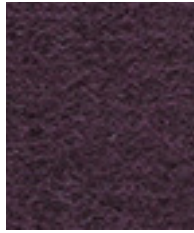
Wesley CUZ82



Napier CUZ08



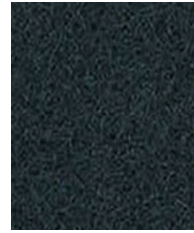
Silcoates CUZ30



Holyoke CUZ2T



Oxford CUZ09



Hull CUZ1P

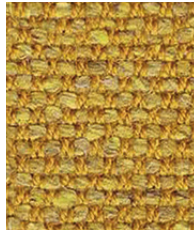
Silk



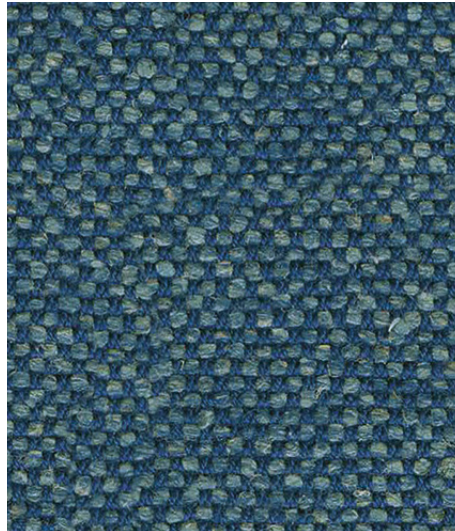
Chancellor SLK19



Parthian SLK09



Arabia SLK02



Monarch SLK15



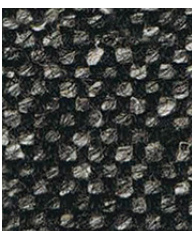
Pamir SLK14



Divine SLK13



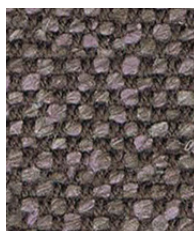
Oriental SLK12



Imeon SLK20



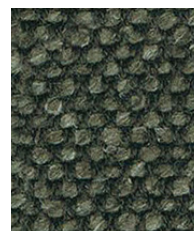
Emperor SLK16



Persia SLK04

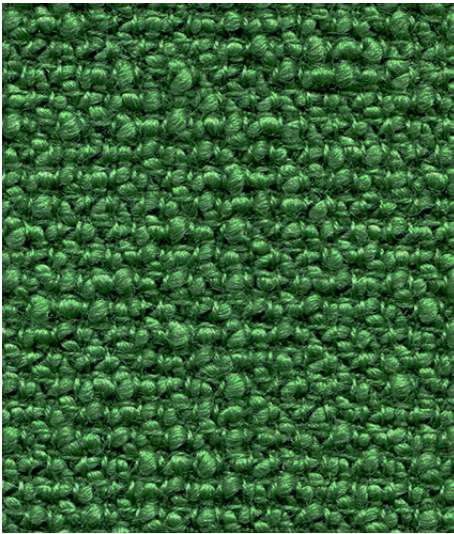


Brunei SLK08

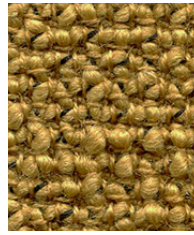


Kingdom SLK10

Yoredale



Cray UDA10



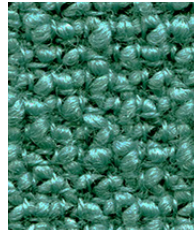
Wharfe UDA18



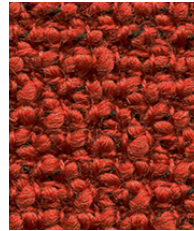
Askrigg UDA03



Kidstone UDA02



Cracoe UDA23



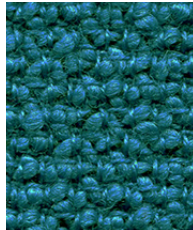
Walden UDA13



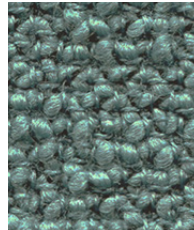
Carperby UDA07



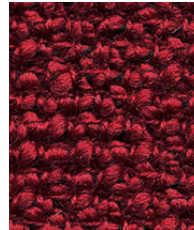
Ribble UDA17



Darley UDA20



Burnsall UDA22



Sedusk UDA14



Leyburn UDA25

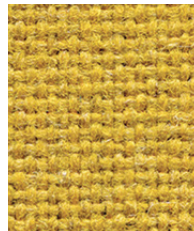
Main Line Flax



Upminster MLF20



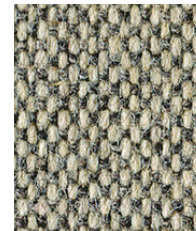
Kensington MLF07



Tooting MLF17



Lambeth MLF08



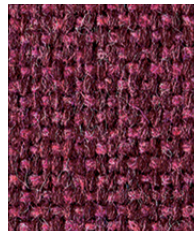
Archway MLF02



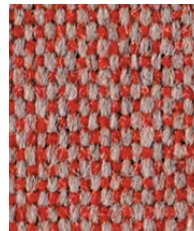
Newbury MLF10



Tufnell MLF18



Wembley MLF11



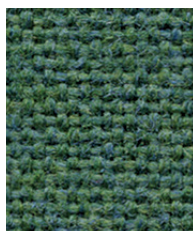
Barbican MLF03



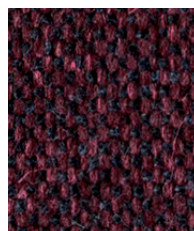
Camden MLF26



Pimlico MLF34



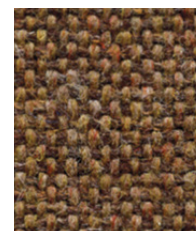
Farringdon MLF29



Northfields MLF40



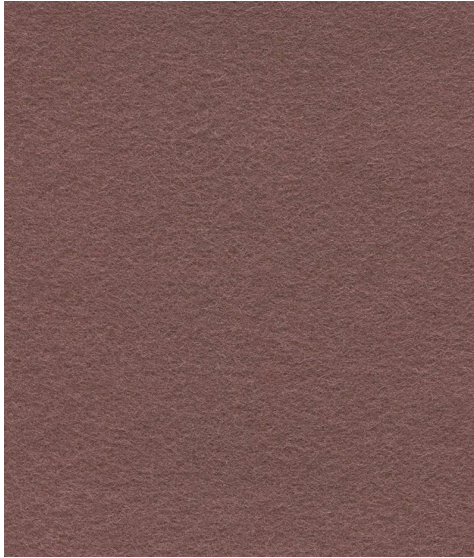
Leyton MLF13



Stockwell MLF15

KEILHAUER | Camira Textile Card

A selection of four wools that are made from all-natural fibers and are available in an array of vibrant, trend-forward colors. Each textile is certified to Indoor Advantage™ Gold and naturally breathable, available in a variety of durable, low-emitting fabrics that have no added flame retardants. All fabrics are Grade D.



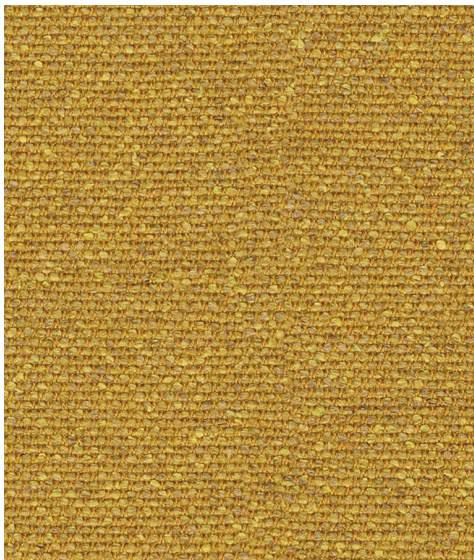
Blazer - D

Classic pure new wool upholstery fabric with a billiard cloth felted finish.



Main Line Flax - D

Inherently flame retardant fabric with interesting solids and cross-colors.



Silk - D

Dobby weave fabric created with three tone tweed effect made from three natural fibers: silk, flax and wool.



Yoredale - D

Highly textured bouclé style yarn with a contrasting black binder and saturated tones.



Technical information

Blazer

Composition
100% Pure New Wool

Environment
Certified to Indoor Advantage™ Gold
Rapidly renewable and compostable
Non metallic dyestuffs

Width
54 inches minimum

Abrasion Resistance*
ASTM D4157 Wyzenbeek method,
Heavy Duty Upholstery Independently
certified to ≥75,000 double rubs.
Covered by a full and comprehensive 10
year guarantee (full details available)

Flammability
California Bulletin 117- 2013
NFPA 260 + UFAC Class 1
BS 7176 Low Hazard
ASTM E84 Class 1 or A (Adhered)
ASTM E84 Class 1 or A (Un-adhered)
NFPA 701 when FR treated
IMO FTP Code (Part 8)

Cleaning
W/S
Vacuum regularly. Wipe with a damp
cloth using a proprietary upholstery
shampoo/soap. For deeper cleaning
use steam or professionally dry clean.
Full details can be found in our cleaning
and disinfection guide.

*Camira recognizes that the number of
Wyzenbeek double rubs does not reflect the
actual wear performance of fabrics. We're so
confident in the durability of our products that
we provide a robust 10 year guarantee (full
details available).

Abrasion test results exceeding ACT
Performance Guidelines are not an indicator of
product lifespan. Multiple factors affect fabric
durability and appearance retention.

Batch to batch variations in shade may occur
within commercial tolerances. We reserve the
right to alter technical specifications without
notice. The Unregistered Design Rights and
the Copyright in all designs are the exclusive
property of Camira Fabrics Limited.

Main Line Flax

Composition
75% Pure New Wool, 25% Flax

Environment
Certified to Indoor Advantage™ Gold
Certified to the EU Ecolabel
Rapidly renewable and compostable
Made from wool and bast fiber

Width
54 inches minimum

Abrasion Resistance*
ASTM D4157 Wyzenbeek method,
Heavy Duty Upholstery Independently
certified to ≥100,000 double rubs.
Covered by a full and comprehensive 10
year guarantee (full details available)

Flammability
California Bulletin 117 - 2013
NFPA 260 + UFAC Class 1
BS 7176 Medium Hazard
ASTM E84 Class 1 or A (Adhered)
ASTM E84 Class 2 or B (Un-adhered)
IMO FTP Code (Part 8)

Cleaning
W/S
Vacuum regularly. Wipe with a damp
cloth using a proprietary upholstery
shampoo/soap. For deeper cleaning
use steam or professionally dry clean.
Full details can be found in our cleaning
and disinfection guide.

*Camira recognizes that the number of
Wyzenbeek double rubs does not reflect the
actual wear performance of fabrics. We're so
confident in the durability of our products that
we provide a robust 10 year guarantee (full
details available).

Abrasion test results exceeding ACT
Performance Guidelines are not an indicator of
product lifespan. Multiple factors affect fabric
durability and appearance retention.

Batch to batch variations in shade may occur
within commercial tolerances. We reserve the
right to alter technical specifications without
notice. The Unregistered Design Rights and
the Copyright in all designs are the exclusive
property of Camira Fabrics Limited.

Silk

Composition
70% Pure New Wool, 19% Flax, 11% Silk

Environment
Certified to Indoor Advantage™ Gold
Rapidly renewable and compostable
Made from wool, bast fiber and recycled
silk
Non metallic dyestuffs

Width
54 inches minimum

Abrasion Resistance*
ASTM D4157 Wyzenbeek method,
Heavy Duty Upholstery Independently
certified to ≥100,000 double rubs.
Covered by a full and comprehensive 10
year guarantee (full details available)

Flammability
California Bulletin 117 - 2013
NFPA 260 + UFAC Class 1
BS 7176 Medium Hazard
ASTM E84 Class 2 or B (Adhered)
ASTM E84 Class 2 or B (Un-adhered)
IMO FTP Code (Part 8)

Cleaning
W/S
Vacuum regularly. Wipe with a damp
cloth using a proprietary upholstery
shampoo/soap. For deeper cleaning
use steam or professionally dry clean.
Full details can be found in our cleaning
and disinfection guide.

*Camira recognizes that the number of
Wyzenbeek double rubs does not reflect the
actual wear performance of fabrics. We're so
confident in the durability of our products that
we provide a robust 10 year guarantee (full
details available).

Abrasion test results exceeding ACT
Performance Guidelines are not an indicator of
product lifespan. Multiple factors affect fabric
durability and appearance retention.

Batch to batch variations in shade may occur
within commercial tolerances. We reserve the
right to alter technical specifications without
notice. The Unregistered Design Rights and
the Copyright in all designs are the exclusive
property of Camira Fabrics Limited.

Yoredale

Composition
95% Wool, 3% Polyester, 2% Nylon

Environment
Certified to Indoor Advantage™ Gold
Non metallic dyestuffs

Width
54 inches minimum

Abrasion Resistance*
ASTM D4966 Martindale method.
Heavy Duty Upholstery independently
certified to ≥50,000 cycles. Covered by
a full and comprehensive 10 year
guarantee (full details available)

Flammability
California Bulletin 117 - 2013
NFPA 260 + UFAC Class 1
IMO FTP Code (Part 8)

Cleaning
W/S
Vacuum regularly. Wipe with a damp
cloth using a proprietary upholstery
shampoo/soap. For deeper cleaning
use steam or professionally dry clean.
Full details can be found in our cleaning
and disinfection guide.

*Camira recognizes that the number of
Martindale cycles does not reflect the actual
wear performance of fabrics. We're so confident
in the durability of our products that we provide
a robust 10 year guarantee (full details available).

Abrasion test results exceeding ACT
Performance Guidelines are not an indicator of
product lifespan. Multiple factors affect fabric
durability and appearance retention.

Batch to batch variations in shade may occur
within commercial tolerances. We reserve the
right to alter technical specifications without
notice. The Unregistered Design Rights and
the Copyright in all designs are the exclusive
property of Camira Fabrics Limited.

KEILHAUER

1450 Birchmount Road
Toronto, ON M1P 2E3
800.724.5665
416.759.5665.
Fax 416.759.5723
info@keilhauer.com
www.keilhauer.com

camira

For additional information or sample requests visit:
www.camirafabrics.com
Samples can also be requested by email at:
memos@camiragroup.com

Suitability Chart for Camira Textiles

KEILHAUER

This chart specifies whether a textile is suitable for an entire product family. To find out model compatibility within the family please contact customer service.

	Blazer	Main Line Flax	Silk	Yoredale
• Textile is suitable				
○ Textile is not suitable				
141	•	•	•	•
6C	•	•	•	•
Aesync	•	•	•	•
Also	•	•	•	•
Boxcar	•	•	•	•
Branden	•	•	•	•
Buncha	•	•	•	•
Cahoots	•	•	•	•
Canal	•	•	•	•
Celia	•	•	•	•
Chips	•	•	•	•
Collo	•	•	•	•
Coy	•	•	•	•
Cona	•	•	•	•
Danber	•	•	•	•
Danforth	•	•	•	•
Dario	•	•	•	•
Doko	•	•	•	•
Doon	•	•	•	•
Eglinton	•	•	•	•
Ellaby	•	•	•	•
Elite	•	•	•	•
Epix	•	•	•	•
Filo	•	•	•	•
Flit	•	•	•	•
Forsi	•	•	•	•
Garner	•	•	•	•
Grand	•	•	•	•
GSD	•	•	•	•
Gym	•	•	•	•
Jumble	•	•	•	•
Junior	•	•	•	•

Suitability Chart for Camira Textiles

KEILHAUER

This chart specifies whether a textile is suitable for an entire product family. To find out model compatibility within the family please contact customer service.

	Blazer	Main Line Flax	Silk	Yoredale
• Textile is suitable				
○ Textile is not suitable				
Juxta	•	•	•	•
KM	•	•	•	•
Lo	•	•	•	•
Loon	•	•	•	•
Lull	•	•	•	•
Luno	•	•	•	•
Melete	•	•	•	•
Meander	•	•	•	•
Opt	•	•	•	•
Orign	•	•	•	•
Oro	•	•	•	•
Pact	•	•	•	•
Parlez	•	•	•	•
Plunk	•	•	•	•
Ponder	•	•	•	•
Rove	•	•	•	•
Reeve	•	•	•	•
Respons	•	•	•	•
Sguig	•	•	•	•
Simple	•	•	•	•
Sky Stool	•	•	•	•
Stact	•	•	•	•
Swurve Mesh (Seat Only)	•	•	•	•
Talk	•	•	•	•
Tom	•	•	•	•
Trua	•	•	•	•
Unity	•	•	•	•
Vanilla	•	•	•	•
Verge	•	•	•	•
Visit	•	•	•	•
Woodrow	•	•	•	•
Wunder	•	•	•	•