

nicolette mayer

ROYAL  1653 DELFT

ROYAL DELFT WALLCOVERING & FABRIC COLLECTION



DISTRIBUTED BY

*Scalamandre*

[www.scalamandre.com/nicolettemayer](http://www.scalamandre.com/nicolettemayer)

1.800.932.4361

nicolette mayer

ROYAL <sup>1653</sup> DELFT

ROYAL DELFT WALLCOVERING & FABRIC COLLECTION

“The Nicolette Mayer Collection Inspiration for 2017 is the rarified ‘World of Blue & White,’ coveted and obsessed over by collectors for hundreds of years, as we too have been obsessed collectors for years. It started years ago with a museum trip, and a trip to Amsterdam, an image of a Tulipiere; all embedded in the back of my mind for years—brewing, marinating, teasing me. An historian by training, I approach design utilizing both aesthetic passion and historical passion. My collection of Chinese porcelain temple jars and Iznik platters did not satisfy completely.

I had a true beloved obsession, and it needed to be expressed.”

– Nicolette Mayer



# TILE PLAY

WIDTH:20.5" REPEAT V:15.75" H:20.5" Straight



BLUE  
WNM 0001 TILE

# MASTERS

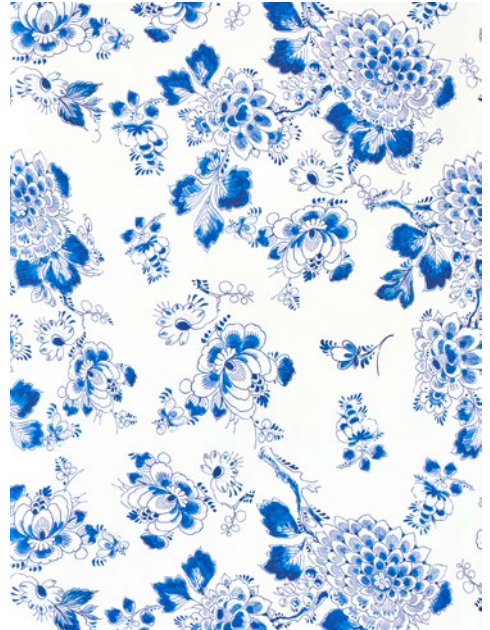
WIDTH:20.5" REPEAT V:29.52" H:20.5" Straight



BLUE  
WNM 0001 MAST

# HERITAGE

WIDTH:20.5" REPEAT V:20.5" H:20.5" Straight



BLUE  
WNM 0001 HERI

# BLOEMDÉCOR

WIDTH:20.5" REPEAT V:39.4" H:20.5" Straight



WHITE  
WNM 0001 BLOM



GRAIN  
WNM 0002 BLOM

# WILLIAM & MARY

WIDTH:27.55" REPEAT V:27.55" H:26.37" Straight



BLUE  
WNM 0002 WMMY



FENCH GRAY  
WNM 0001 WMMY

# FLORA & FAUNA

WIDTH:27.5" REPEAT V:27.5" H:27.5" Straight - Pearlized Ground



WHITE  
WNM 0001 FLOR



ORCHID  
WNM 0002 FLOR



FONTANA  
WNM 0003 FLOR



BLUE  
WNM 0004 FLOR



GRAY  
WNM 0005 FLOR



BLACK  
WNM 0006 FLOR

## INSPIRATION

WIDTH:34" REPEAT V:20" H:34" Straight - Grasscloth



BLUE  
WNM 0001 INSP

## MASTERPIECES TULIP

WIDTH:34" REPEAT V:18" H:17" Straight - Grasscloth



WHITE  
WNM 0001 MSTP



GRAY  
WNM 0002 MSTP

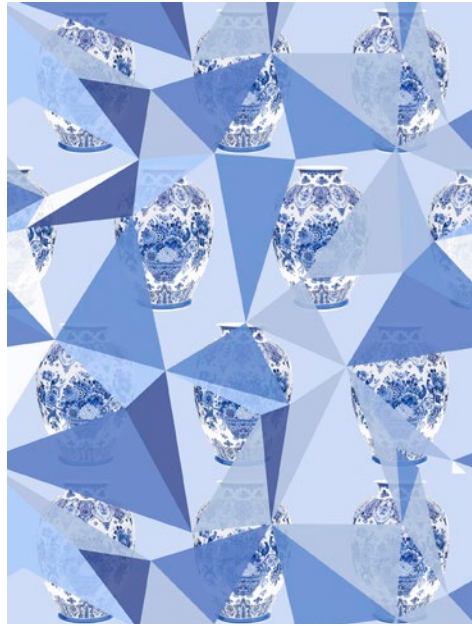


# ELEMENTS

WIDTH:34" REPEAT V:34" H:34" Straight - Grasscloth



WHITE  
WNM 0001 ELEM



BLUE  
WNM 0002 ELEM

# IKAT

W:34" REPEAT V:34" H:34" Straight - Grasscloth



BLUE  
WNM 0001 IKAT

# IMPERIAL

WIDTH:34" REPEAT V:18" H:17" Straight - Grasscloth



WHITE  
WNM 0001 IMPE



BLUE  
WNM 0002 IMPE

# COLLECTIONS

WIDTH:34" REPEAT V:60" H:34" Straight - Grasscloth



BLUE  
WNM 0001 COLL



# GARNITURE SCENIC WITH TULIPS

PANEL WIDTH:27.5" LENGTH:120" Straight

The provenance of Royal Delft Garniture is the popularity of garniture collecting in 17th century Europe, which influenced interior design, global trade, and pottery manufacture throughout Europe. The phenomenon of 'garnitures, and the way in which they are used in European interiors, continues to this day. Displayed above fireplaces, mantels, chimney pieces, cabinets, cupboards, and over doorways, they embellish or 'garnish' the interior and enhance the status of the owner. The fashion began in Europe in the 1640s, using mismatched porcelain beakers, vases, bowls, and jars imported from China. By the 1690s, purposely made sets with matching decoration were produced in China, Japan, and Europe. The fashion continued well into the 18th century, with almost every ceramic manufacturer producing examples. Contemporary interior designers now re-interpret vase sets in both modern and historic interiors.

The two-panel Garniture pattern has a left and a right panel. The printed image height is 49.25". Each is in repeat horizontally and can 'float' at any level that a designer might want to place the Garniture set with 29.5" white space above and 71" below, so a designer can place it above a cabinet or a console, if desired. Alternatively, it could be placed at ceiling height below moldings. It also allows for different wall heights without sacrificing the main design, which has fantastic impact.



NEUTRAL - LEFT PANEL  
WNM 0001 GSTL



NEUTRAL - RIGHT PANEL  
WNM 0001 GSTR



BLUE - LEFT PANEL  
WNM 0002 GSTL



BLUE - RIGHT PANEL  
WNM 0002 GSTR

# GARNITURE SCENIC NO TULIPS

PANEL WIDTH:27.5" LENGTH:120" Straight



NEUTRAL - LEFT PANEL  
WNM 0001 GSNL



NEUTRAL - RIGHT PANEL  
WNM 0001 GSNR



BLUE - LEFT PANEL  
WNM 0002 GSNL



BLUE - RIGHT PANEL  
WNM 0002 GSNR

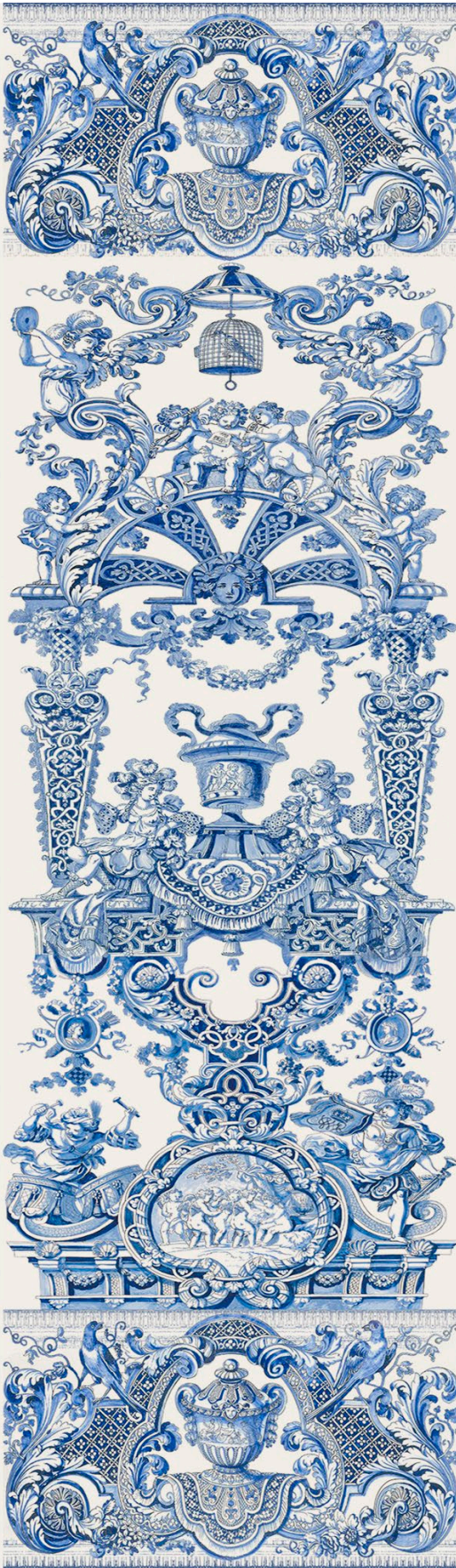






# HAMPTON COURT

PANEL WIDTH:34" LENGTH:144" Straight



BLUE  
WNM 0001 HAMP

# TULIPIERE FLOWERS

PANEL WIDTH:27.5" LENGTH:120" Straight



WHITE  
WNM 0001 TULI



BLACK  
WNM 0002 TULI

# TULIPIERE FLOWERS

SHEER PANEL WIDTH:52" LENGTH:144" Straight



GRAY  
N4 0001 TULP

# MASTERPIECES TULIP

SHEER WIDTH:54" REPEAT V:14" H:13" Straight



WHITE  
N4 0001 MAST



GRAY  
N4 0002 MAST

# LION JAR

SHEER WIDTH:54" REPEAT V:27" H:27" Straight



BLUE  
N4 0001 LION

# FILAGREE

SHEER WIDTH:54" REPEAT V:27" H:13.5" Straight



BLUE  
N4 0001 FILA

# PURISSIMA

SHEER WIDTH:54" REPEAT V:16" H:13" Straight



WHITE MULTI  
N4 0001 PURI





# ICONS

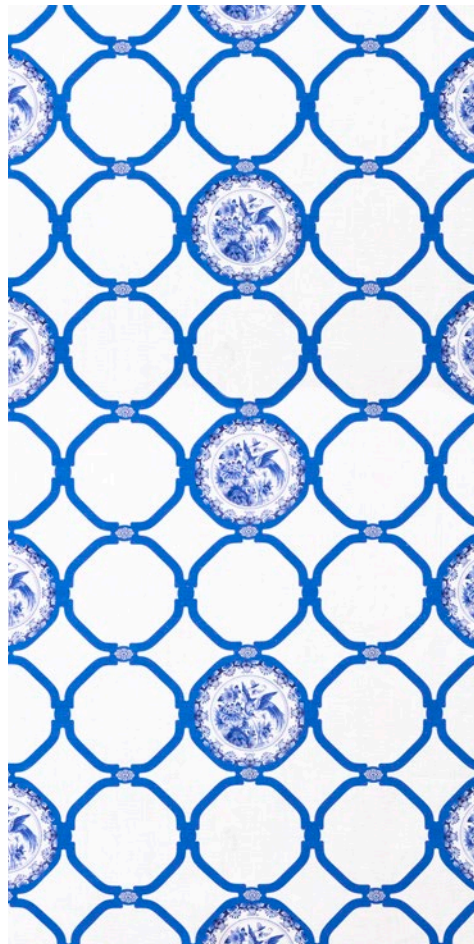
W:54" REPEAT V:24" H:13.5" Straight



BLUE  
N4 0001 ICON

# ETERNITY

W:54" REPEAT V: 13.5" H: 27" Straight



BLUE  
N4 0001 ETER

# ETUDES DE FLEURS

WIDTH:54" REPEAT V:27" H:27" Straight



BRIGHTS  
N4 0001 ETUD



BLUE  
N4 0002 ETUD

# WILLIAM & MARY

WIDTH:54" REPEAT V:26" H:27" Straight



BLUE  
N4 0001 WMMY

# PORCELEYNE

WIDTH:54" REPEAT V:24" H:27" Straight



BLUE  
N4 0001 PORC

# INSPIRATION

WIDTH:54" REPEAT V:15.5" H:27" Straight



BLUE  
N4 0001 INSP







DISTRIBUTED BY

*Scalamandre*

[www.scalamandre.com/nicolettemayer](http://www.scalamandre.com/nicolettemayer)

1.800.932.4361