



KØL

product+design guide

2020.06

This document replaces any previous version.

KØL reserves the right to change, delete or update any content of this document at any time and without prior notice.

COLOURS

- 8 stocked
- 9 made to order

TEXTURES

- 12 blast
- 13 rigo
- 14 surface
- 15 stripes
- 16 groove

DESIGN GUIDE

- 25 dimensions
- 26 standard
- 27 plank
- 28 fastening

TECHNICAL DATA

- 32 fire resistance
- 34 technical data sheet

durable

sustainable

energy efficient

UNIQUE

KØL High Density Fibre Cement is a natural through-coloured panel that highlights the raw beauty and matte texture of cement. Each panel has subtle variations in colour and pigment which allow for slight differences in its tonality and texture.

Fibre cement is a composite material made up of cement, mineral fillers, cellulose and non-toxic fibres. These natural materials ensure KØL panels are environmentally-friendly and long lasting.





KØL Slate, Multi-residential, Toronto, ON
CONTRACTOR: Reveal Cladding

colours

STOCKED



telegrey
7038



slate
7015



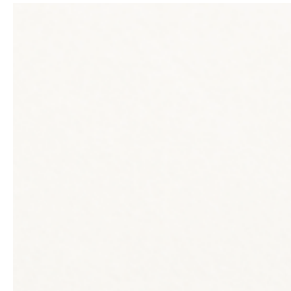
natural
9002



zinc
7037



desert
1019



pure white
9010

* Standard size 8mm thick panels stocked in North America

MADE TO ORDER



wheat
1002



moss
6021



beach
1014



brick
8023



terra
8025



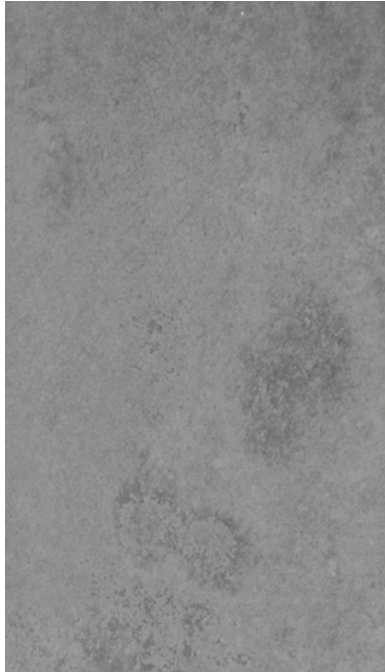
sandstone
3012

* Typical lead-time of 8-12 weeks



textures

KØL BLAST



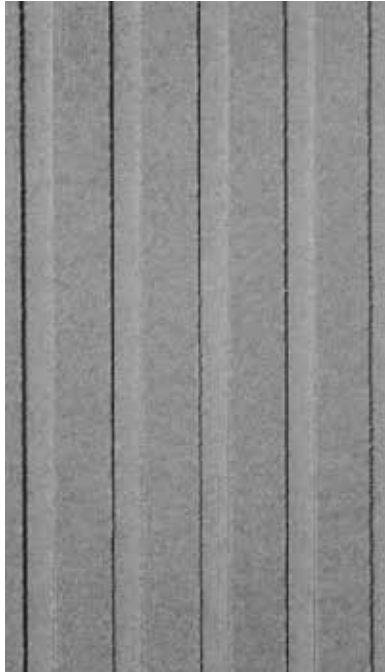
KØL BLAST has a sandblasted finish that creates a natural, raw-looking surface which highlights the soft tones of the product.

KØL BLAST is available in Standard and Plank panel sizes.
* refer to page 25

All textures are made to order.
BLAST is available in 11 through coloured tones with hydroplus finishing.



KØL RIGO



KØL RIGO has a linear grooved surface that offers a unique play on light and shadow. Slight surface and color variations give this panel personality which makes a bold statement.

* refer to page 10

KØL RIGO is available in standard panel sizes.

* refer to page 25

All textures are made to order. RIGO is available in 12 through-coloured tones with hydroplus finishing.



KØL SURFACE

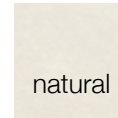


KØL SURFACE is a rustic, irregular textured finish that creates an attractive stone look.

KØL SURFACE is available in Standard panel sizes.

* refer to page 25

All textures are made to order. SURFACE is available in 3 through-coloured tones with hydroplus finishing.



KØL STRIPES



KØL STRIPES has a surface characterized by linear lines and grooves which create an effect similar to board-formed concrete.

KØL STRIPES is available in Standard panel sizes.

* refer to page 25

All textures are made to order. STRIPES is available in 12 through coloured tones with hydroplus finishing.



KØL GROOVE



KØL GROOVE has deep parallel lines that run the length of the panel and provide depth and character to the building design.

* refer to page 17

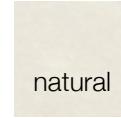
KØL GROOVE is available in Standard and Plank panel sizes.

* refer to page 25

All textures are made to order. GROOVE is available in 12 through coloured tones with hydroplus finishing.



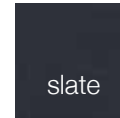
desert



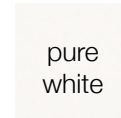
natural



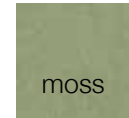
sand
stone



slate



pure
white



moss



zinc



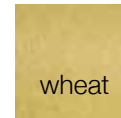
beach



terra



telegrey

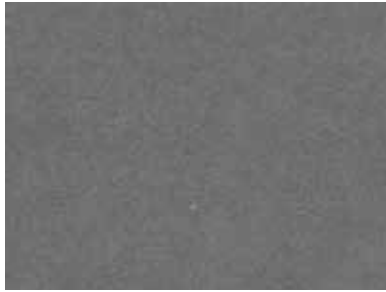


wheat



brick

TEXTURES



standard



blast



surface



rigo



groove



stripes



KØL Pure White, Multi-residential, Halifax, NS
ARCHITECT: Solterre Design CONTRACTOR: Castone Construction
PHOTOGRAPHY: Acorn Art & Photography

ADVANTAGES

- Optimal weather protection
- Longevity
- Simple installation in any climate
- Little to no maintenance required
- Proven system performance
- No cracks, paint or sealant issues
- Non-combustible

KØL Pure White, Private Residence, Toronto, ON
DESIGN: Track Interiors CONTRACTOR: Mazenga Building Group Ltd.
PHOTOGRAPHY: Ryan Kelly





KØL Slate, The Ranch, NS
DESIGN: Workshop Design Co. CONTRACTOR: Streamline Construction
PHOTOGRAPHY: Acorn Art & Photography

design guide

DESIGN FLEXIBILITY

KØL High Density Fibre Cement is offered in Standard and Plank sizes and can also be ordered factory cut to custom sizes to accommodate your project.

Standard sizes are available and in stock in North America. They can be fabricated on the construction site with standard hand tools or in a shop with CNC equipment.

Possibilities are endless with KØL's range of colours, sizes and textures.

DIMENSIONS

		LONG SHEET	SHORT SHEET	PLANK LONG	PLANK SHORT
SIZE	Imperial	49 7/32" x 120 5/64"	49 7/32" x 98 21/50"	7 7/8" x 120 5/64"	7 7/8" x 98 21/50"
	Metric	1250mm x 3050mm	1250mm x 2500mm	200mm x 3050mm	200mm x 2500mm
THICKNESS	Imperial	5/16" & 3/8"	5/16" & 3/8"	5/16" & 3/8"	5/16" & 3/8"
	Metric	8mm & 10mm	8mm & 10mm	8mm & 10mm	8mm & 10mm
WEIGHT	5/16"	Imperial 3lbs/ft ²	3lbs/ft ²	3lbs/ft ²	3lbs/ft ²
	8mm	Metric 13.6kg/m ²	13.6kg/m ²	13.6kg/m ²	13.6kg/m ²
	3/8"	Imperial 3.28lbs/ft ²	3.28lbs/ft ²	3.28lbs/ft ²	3.28lbs/ft ²
	10mm	Metric 16kg/m ²	16kg/m ²	16kg/m ²	16kg/m ²

KØL STANDARD

long sheet

length 120.07" (3050mm)
width 49.21" (1250mm)

thickness 5/16" and 3/8" (8mm and 10mm)

short sheet

length 98.4" (2500mm)
width 49.21" (1250mm)

thickness 5/16" and 3/8" (8mm and 10mm)

KØL PLANK

KØL Plank is available in Standard, Blast and Groove textures, custom sizes available upon request.

plank long

thickness 5/16" and 3/8" (8mm and 10mm)

length 120.07" (3050mm)

width 7.87" (200mm)

plank short

thickness 5/16" and 3/8" (8mm and 10mm)

length 98.4" (2500mm)

width 7.87" (200mm)

FASTENING

FACE FASTENED

KØL panels can be face fastened with stainless steel colour matched facade screws or stainless steel rivets. Face fastening is cost-effective and efficient. Colour matched fasteners are barely visible from close up or far away.



CONCEALED MECHANICAL FASTENING

Clip and rail systems are used in conjunction with undercut anchors which secure system specific clips on the back side of the panel. These systems are suitable for use on KØL 10mm panels in all textures except KØL Rigo and KØL Stripes.



* Refer to manufacturer's installation instructions for details.



KØL Zinc, Private Residence, Saskatoon, SK
ARCHITECT: Oxbow Architecture
CONTRACTOR: On The Mark Homes

technical data

FIRE RESISTANCE

KØL High Density Fibre Cement panels are non-combustible according to CAN/ULC S114-05, ASTM E84 and ASTM E136.





KØL Pure White, Bilby Street Multi-residential, Halifax, NS
ARCHITECT: Michael Napier Architecture
CONTRACTOR: Montgomery Properties Limited

TECHNICAL DATA SHEET

Characteristics	KØL High Density Fibre Cement
Density (dry)	≥1.6 kg/dm ³
Max water absorption* - untreated sheets	≤ 25%
Max water absorption* – hydrophobic sheets	≤ 9%
Max water absorption* – UV treated sheets	≤ 3%
Natural humidity	10 - 15%
Movement in extreme weather conditions/temperature and moisture conditions -5°C - 100°C; 20 - 90%	1.5 mm/m
Thermal conductivity	0.36 W/mK
Thermal expansion coefficient	0.00001 °C ⁻¹
Fire rating	CAN/ULC S114-05 ASTM E136 ASTM E84 - CLASS A
Freeze resistance	optimum
Oils, acids, bases, salts resistance	good
Waterproof – inalterability	absolute
Wear resistance	good
Durability classification (EN 12467:2012)	category A
Strength classification (EN 12467:2012) (wet) untreated sheets	class 4 ≥ 18 N/mm ²
Strength classification (EN 12467:2012) (wet) hydrophobic-UV treated sheets	class 5 ≥ 24 N/mm ²

Bending strength (dry): perpendicular rupture to fibres	32 N/mm ²
Bending strength (dry): parallel rupture to fibres	22 N/mm ²
Standard sizes (inches)	1250mm x 2500mm (49.21" x 98.42") 1250mm x 3050mm (49.21" x 120.07")
Tolerances on nominal dimensions	Level 1 ± 2 mm length ± 1 mm width
Tolerances on straightness of edges	Level 1 0.1%
Tolerances on squareness of edges	Level 1 2mm/m
Tolerances on thickness for smooth sheets	± 0.2 mm
Compression resistance	40 N/mm ²
Resilience	2 N/mm ²
E modulus of elasticity (dry)	13,000 N/mm ²
Superior caloric power	0.14 MJ/kg
Vapour resistance factor m	45
CE marked product	EN 12467:2012
* wet over dry	

* This document replaces any previous version.

KØL reserves the right to change, delete or update any content of this document at any time and without prior notice.



t: 902.877.3060

info@kolfacade.com

kolfacade.com