



The world's **best-selling** electric floor heating brand™

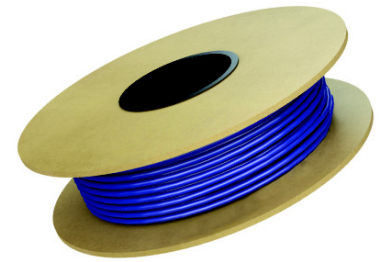
# DCM-PRO CABLE SUBMITTAL SHEET WSC-0816

## PRODUCT CODE

NADCM-C-xxx-xxx // NADCM-C-voltage-wattage

## PRODUCT DESCRIPTION

The Warmup DCM-PRO Cable is a custom designed cable compatible with all uncoupling membranes. It can be installed at 2, 3 or 4 pgs. The cable itself allows primary heating thanks to the twin-core ETFE cable, for highest output. It is guaranteed for Lifetime. Even better results when used with Warmup 4iE® Smart Thermostat.

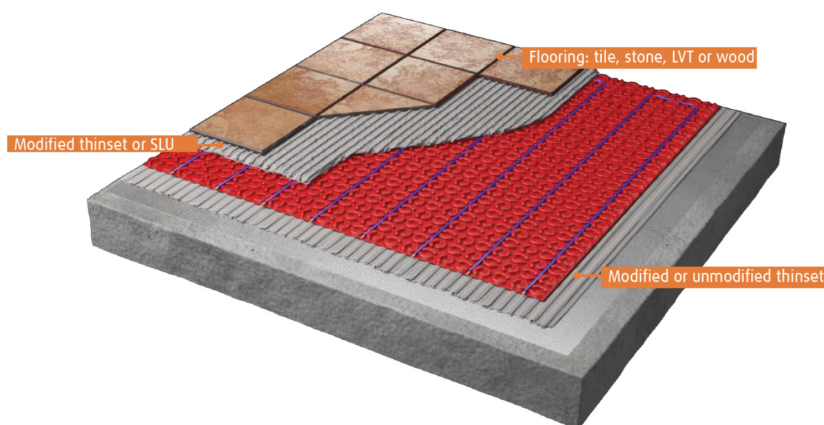


Operating voltage	120V, 208V or 240V
Thickness	3/16" (4.5mm - +/- 0.2mm)
Output	Approx. 4W/lin foot
Construction	Multi-stranded, dual wire
Inner insulation	ETFE
Outer jacket	PVC
Earth braid	85% min copper
Cold lead	10ft (3m) long, 2 core braided



## APPLICATION

The Warmup DCM-PRO Cable is compatible with the Warmup Fleece-backed and Peel-and-Stick DCM-PRO Membranes.



WARMUP INC.  
USA: us@warmup.com  
Tel.: 1-888-927-6333  
www.warmup.com

CANADA: ca@warmup.com  
Tel.: 1-888-592-7687  
www.warmup.ca



The world's **best-selling** electric floor heating brand™

### PRODUCT LISTING AND CABLE SPACING

	PRODUCT CODE	Cable length (ft)	Amps	Membrane spacing			Loose laid cable w/ spacers	
				2 pegs	3 pegs	4 pegs	3"	4"
120 Volt	NADCM-C-120-65	16.7	0.5	3	5	7	4	6
	NADCM-C-120-130	33.1	1.1	7	10	13	8	11
	NADCM-C-120-195	49.9	1.6	10	15	20	12	17
	NADCM-C-120-260	66.3	2.2	13	20	27	17	22
	NADCM-C-120-325	83.0	2.7	17	25	33	21	28
	NADCM-C-120-390	99.4	3.3	20	30	40	25	33
	NADCM-C-120-525	132.9	4.4	27	40	53	33	44
	NADCM-C-120-655	166.0	5.5	33	50	67	42	55
	NADCM-C-120-785	199.1	6.5	40	60	80	50	66
	NADCM-C-120-920	232.3	7.7	47	70	93	58	77
	NADCM-C-120-1050	265.4	8.8	53	80	107	66	88
	NADCM-C-120-1180	298.6	9.8	60	90	120	75	100
	NADCM-C-120-1315	331.7	11.0	67	100	133	83	111
	NADCM-C-120-1445	364.8	12.0	73	110	147	91	122
	NADCM-C-120-1575	398.0	13.1	80	120	160	99	133
240 Volt	NADCM-C-240-325	83.0	1.4	17	25	33	21	28
	NADCM-C-240-390	99.4	1.6	20	30	40	25	33
	NADCM-C-240-525	132.9	2.2	27	40	53	33	44
	NADCM-C-240-655	166.0	2.8	33	50	67	42	55
	NADCM-C-240-785	199.1	3.3	40	60	80	50	66
	NADCM-C-240-920	232.3	3.9	47	70	93	58	77
	NADCM-C-240-1050	265.4	4.5	53	80	107	66	88
	NADCM-C-240-1180	298.6	5.0	60	90	120	75	100
	NADCM-C-240-1310	331.7	5.6	67	100	133	83	111
	NADCM-C-240-1640	414.7	7.0	83	125	167	104	138
	NADCM-C-240-1970	497.7	8.4	100	150	200	124	166
	NADCM-C-240-2300	580.7	9.8	117	175	233	145	194
	NADCM-C-240-2630	663.4	11.2	133	200	266	166	221
	NADCM-C-240-2955	746.4	12.6	150	225	300	187	249
	NADCM-C-240-3240	829.4	13.5	167	250	333	207	276

### Installation Membrane

Code	Description	Dimensions
NADCM-M-80	Box of 10 sheets, covering 81.6sqft in total.	3'3" x 2'7"
NADCM-M-150	Roll of membrane, covering 150 sqft in total.	3'3" x 47'2"

### Cable plastic fixing strips

Code	Description
PLG-DCM-12	Plastic fixing strips - 40 per box.

### WARRANTY & MAINTENANCE

When installed according to the installation manual, the DCM-PRO Cable is covered with Warmup's Lifetime manufacturer warranty.

### TECHNICAL SUPPORT

Warmup is available 24/7/365 at (888) 927-6333.  
For quotes, layouts and specific technical information, contact us at:

**Warmup USA**  
(888) 927-6333  
us@warmup.com

**Warmup CANADA**  
(888) 592-7687  
ca@warmup.com

### RELATED PRODUCTS

- 4iE® Smart Thermostat - see WSC-0926
- DCM-PRO Fleece-backed Membrane for DCM-PRO Cable - see WSC-1025
- DCM-PRO Peel-and-Stick Membrane for DCM-PRO Cable - see WSC-1001